

Asus Essence STX II 7.1 Quick Start Manual

High fidelity audio card with headphone amplifier

1
2

--

•

Bookmarks

[Download this manual](#)

Quick Links



Essence STX II 7.1

High fidelity audio card with headphone amplifier

Quick Start Guide



1. Read and keep these instructions for future reference.
2. Follow all instructions and take note of all warnings.
3. Do not use this apparatus near water or expose the device to moisture.
4. Clear moisture surface with a cloth. Moisture using detergents or cleaning fluid.
5. Do not block any ventilation openings. Install in accordance with the manufacturer's instructions.
6. Do not install near any heat source such as radiators, heat registers, stoves, or other apparatus (including amplifiers) that produce heat.
7. Only use attachments/accessories that are approved by the manufacturer.
8. Using this apparatus during a lightning storm or when a power surge is forecast.
9. Refer all repairs to qualified service personnel. Servicing is required when the apparatus has been damaged in any way, such as liquid has been spilled or objects have fallen into the apparatus, the apparatus has been exposed to rain or moisture, does not operate normally, or has been dropped.



To ensure a successful installation of the ASUS Essence STX II 7.1, your computer must meet the following requirements:

- 64-bit compatible PC with one PCI Express 1.0 or full-height PCI audio card slot adjacent to the Essence STX II card (for daughter board installation)
- Microsoft Windows 8.1, 8.1 x 64, XP (32-bit/64-bit)
- Intel Pentium 4 or AMD Athlon 1400 CPU, or faster CPU
- 256 MB DRAM system memory
- 60 MB available HDD space
- CD-ROM drive (or DVD-ROM drive) for software installation

High-quality headphones or powered analog speakers to enjoy the ultra-high-fidelity sound of the card.

1. Unplug your computer's power cord and disconnect all peripherals or cables.
2. Touch a metal object, such as the metal side of your computer, to avoid damaging components due to static electricity.
3. Remove the chassis cover.
4. Remove the expansion slot covers of two PCI Express slots until the cards are seated firmly in place.
5. Insert the Essence STX II and HE into the PCI Express slots until the cards are seated firmly in place.
6. Secure the cards into the slots with screws.
7. Using the displayboard connection cable, connect the Essence HE and Essence STX II.
8. Replace the chassis cover and reconnect all the cables.
9. Power on the computer.

Installation

After installing the ASUS support kit (PSU), connect the 4-pin Molex connection to power the card. Connect it to your power supply unit before installation.

- NOTE: Essence STX II 7.1 requires a 4-pin Molex connection to power the card. Connect it to your power supply unit before installation.
- Driver version and the contents of the support CD are subject to change without notice.
- To install the audio card driver:
1. Insert the driver CD into your optical drive. Proceed to step 5 if Automate is enabled on your computer and the driver setup screen appears. If Automate is not enabled on your computer, perform step 2.
 2. On your Windows desktop, launch File Explorer.
 3. Windows Explorer
 4. Click Start then Computer.
 5. Windows Explorer
 6. Click
 7. In File Explorer, double-click the optical drive icon.
 8. Double-click Setup.exe.
 9. Read through the End User License Agreement and click Accept when prompted. Follow the onscreen instructions to complete the driver installation.
 10. When driver installation is complete, click Finish.

Essence STX II

Essence HE

English

12. Rear RCA outputs: Connect to the rear input of your system.
13. Front right RCA output: Connect to the right input of the 2.1 channel speakers or system.
14. Front left RCA output: Connect to the left input of the 2.1 channel speakers or system.

FRENCH

12. Sortie RCA avant droite: permet de connecter le haut-parleur gauche d'un système d'enceintes 2.0 à 1 voix.
13. Sortie RCA avant gauche: permet de connecter le haut-parleur gauche d'un système d'enceintes 2.0 à 1 voix.
14. Amplifié 6.3mm (1/4") headphone output: Connect to your headphones/headsets.
15. Sortie RCA avant droite: permet de connecter le haut-parleur gauche d'un système d'enceintes 2.0 à 1 voix.

NOTES:

1. Do not connect your speakers to the headphone output.
2. To avoid damage to the speakers, please use the provided high driving power music source to get a gain compatible with the speaker's power handling.
3. Turn off the power to the speakers before connecting them to the headphone output.

REMARKES:

1. Ne pas connecter vos enceintes à la sortie casque.
2. Pour éviter d'endommager la carte son, réglez le gain compatible à partir du gestionnaire de votre système.
3. Arrêtez le courant des enceintes avant de les connecter à la sortie casque.



Essence STX II 7.1

High fidelity audio card with headphone amplifier

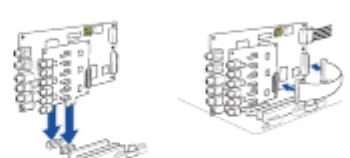
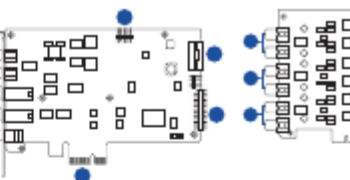
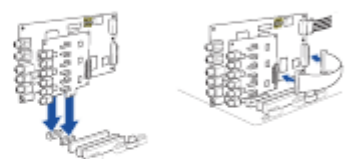


To ensure a successful installation of the ASUS Essence STX II 7.1, your computer must meet the following requirements:

- 64-bit compatible PC with one PCI Express 1.0 or full-height PCI audio card slot adjacent to the Essence STX II card (for daughter board installation)
- Microsoft Windows 8.1, 8.1 x 64, XP (32-bit/64-bit)
- Intel Pentium 4 or AMD Athlon 1400 CPU, or faster CPU
- 256 MB DRAM system memory
- 60 MB available HDD space
- CD-ROM drive (or DVD-ROM drive) for software installation

High-quality headphones or powered analog speakers to enjoy the ultra-high-fidelity sound of the card.

1. Unplug your computer's power cord and disconnect all peripherals or cables.
2. Touch a metal object, such as the metal side of your computer, to avoid damaging components due to static electricity.
3. Remove the chassis cover.
4. Remove the expansion slot covers of two PCI Express slots until the cards are seated firmly in place.
5. Insert the Essence STX II and HE into the PCI Express slots until the cards are seated firmly in place.
6. Secure the cards into the slots with screws.
7. Using the displayboard connection cable, connect the Essence HE and Essence STX II.
8. Replace the chassis cover and reconnect all the cables.
9. Power on the computer.



ManualsLib.com

ManualsLib.com

Se vede

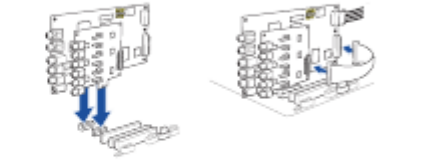
1. Assicurarsi che il cavo sia collegato correttamente.
2. Collegare il cavo al sistema di altoparlanti.
3. Collegare il cavo al sistema di altoparlanti.
4. Collegare il cavo al sistema di altoparlanti.
5. Collegare il cavo al sistema di altoparlanti.
6. Collegare il cavo al sistema di altoparlanti.
7. Collegare il cavo al sistema di altoparlanti.
8. Collegare il cavo al sistema di altoparlanti.
9. Collegare il cavo al sistema di altoparlanti.
10. Collegare il cavo al sistema di altoparlanti.



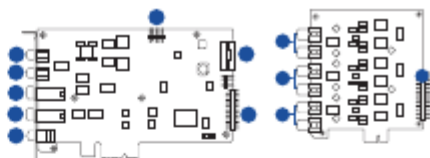
Essence STX II 7.1

High fidelity audio card with headphone amplifier

1. Assicurarsi che il cavo sia collegato correttamente.
2. Collegare il cavo al sistema di altoparlanti.
3. Collegare il cavo al sistema di altoparlanti.
4. Collegare il cavo al sistema di altoparlanti.
5. Collegare il cavo al sistema di altoparlanti.
6. Collegare il cavo al sistema di altoparlanti.
7. Collegare il cavo al sistema di altoparlanti.
8. Collegare il cavo al sistema di altoparlanti.
9. Collegare il cavo al sistema di altoparlanti.
10. Collegare il cavo al sistema di altoparlanti.



1. Assicurarsi che il cavo sia collegato correttamente.
2. Collegare il cavo al sistema di altoparlanti.
3. Collegare il cavo al sistema di altoparlanti.
4. Collegare il cavo al sistema di altoparlanti.
5. Collegare il cavo al sistema di altoparlanti.
6. Collegare il cavo al sistema di altoparlanti.
7. Collegare il cavo al sistema di altoparlanti.
8. Collegare il cavo al sistema di altoparlanti.
9. Collegare il cavo al sistema di altoparlanti.
10. Collegare il cavo al sistema di altoparlanti.



1. Assicurarsi che il cavo sia collegato correttamente.
2. Collegare il cavo al sistema di altoparlanti.
3. Collegare il cavo al sistema di altoparlanti.
4. Collegare il cavo al sistema di altoparlanti.
5. Collegare il cavo al sistema di altoparlanti.
6. Collegare il cavo al sistema di altoparlanti.
7. Collegare il cavo al sistema di altoparlanti.
8. Collegare il cavo al sistema di altoparlanti.
9. Collegare il cavo al sistema di altoparlanti.
10. Collegare il cavo al sistema di altoparlanti.



1. Assicurarsi che il cavo sia collegato correttamente.
2. Collegare il cavo al sistema di altoparlanti.
3. Collegare il cavo al sistema di altoparlanti.
4. Collegare il cavo al sistema di altoparlanti.
5. Collegare il cavo al sistema di altoparlanti.
6. Collegare il cavo al sistema di altoparlanti.
7. Collegare il cavo al sistema di altoparlanti.
8. Collegare il cavo al sistema di altoparlanti.
9. Collegare il cavo al sistema di altoparlanti.
10. Collegare il cavo al sistema di altoparlanti.



ManualsLib.com

ManualsLib.com

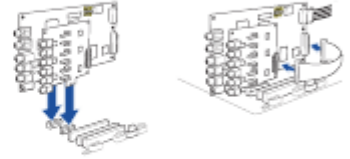
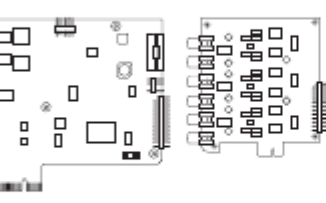
NORWEGIAN
 En trykkløst, uten MP3-ikon til synteseaktort.
 2. Fremme høyre RCA-utgang. Koble til høyre inngang på
 3.
 S/PDIF-kabeltilkobling. Laga utgangen digitalt
 202.2-kabelknytningssystemet.
 (akustisk), digitalt lyd for høyttalere og koblet til
 lydanlegg, eller digitalt lyd for digitalt lyd, uten PCM.
 2.
 Fremme venstre RCA-utgang. Koble til venstre inngang
 Delby Digital, DTS og MP3-pro.
 202.2-kabelknytningssystemet.
 3.
 PCI Express-oppsett. Laga innstilt PC Express-pakke
 3.
 Forpakket 6,3 mm (1,4") ledetilknytning. Koble
 til hovedkortet.
 2.
 Moniteringslagernummer. For mer informasjon, se
 7.2-veileder til Acer HEC i moniteringslagernummeret.



Essence STX II 7.1

High fidelity audio card with headphone amplifier

MERSOUDE
 4. Anslutt Molex-uttaket. Laga virevrikkings
 uttaket.
 7. For å sikre riktig kabeltilkobling, opp
 (kompatibel gain) sensorlyd eller
 HONNOR: STX-versjonen
 lyden for du stamme
 lufttarmeski kortet.
 2. D = med MKE kable for
 8.
 Egenveit audiolig. Laga
 (for høyttalere) og
 audiolig.
 2. Høyttalere
 4. Høyttalere
 3. Høyttalere
 4. Høyttalere
 5. Høyttalere
 6. Høyttalere
 7. Høyttalere
 8. Høyttalere
 9. Høyttalere
 10. Høyttalere
 11. Høyttalere
 12. Høyttalere



GREEK
 PCI Express-oppsett. Koble til et PCI Express-oppsett på
 3.
 Forpakket 6,3 mm (1,4") ledetilknytning. Koble til
 hovedkortet.
 2.
 Høyttalere. Laga utgangen digitalt lyd for høyttalere, og
 koblet til lydanlegg, eller digitalt lyd for digitalt lyd, uten
 PCM.
 2.
 Fremme høyre RCA-utgang. Koble til høyre inngang på
 3.
 S/PDIF-kabeltilkobling. Laga utgangen digitalt lyd for
 høyttalere, eller digitalt lyd for digitalt lyd, uten PCM.
 2.
 Fremme venstre RCA-utgang. Koble til venstre inngang
 Delby Digital, DTS og MP3-pro.
 202.2-kabelknytningssystemet.
 3.
 PCI Express-oppsett. Laga innstilt PC Express-pakke
 3.
 Forpakket 6,3 mm (1,4") ledetilknytning. Koble til
 hovedkortet.
 2.
 Moniteringslagernummer. For mer informasjon, se
 7.2-veileder til Acer HEC i moniteringslagernummeret.

FORMATTING
 USB2.0 / Fire Edition

ManualsLib.com

0.3 mm
 0.5 mm
 1 mm
 2 mm
 3 mm
 4 mm
 5 mm
 6 mm
 7 mm
 8 mm
 9 mm
 10 mm

[Next Page](#)

1

2

Related Manuals for Asus Essence STX II 7.1

[Amplifier Asus Xonar U7 User Manual](#)

7.1 usb soundcard & headphone amplifier (43 pages)

[Amplifier ASUS Xonar Essence STU Manual](#)

H-fi usb dac (digital-to-analog converter) (7 pages)

[Amplifier ASUS Xonar Essence STU User Manual](#)

Hi-fi usb dac (digital-to-analog converter) (19 pages)

[Amplifier Asus Xonar Essence STU User Manual](#)

Tweaking kit (7 pages)

[Amplifier Asus xonar u7 series User Manual](#)

7.1 usb soundcard & head-phone amplifier (24 pages)

[Amplifier Asus Essence STX II Quick Start Manual](#)

High fidelity audio card with headphone amplifier (2 pages)

[Amplifier Asus Xonar U3 PLUS User Manual](#)

Mobile headphone amp usb soundcard (34 pages)

Summary of Contents for Asus Essence STX II 7.1

[Page 1](#) 10. Sorties RCA latérales : connectez les haut-parleurs latéraux 3. Remove the chassis cover. de votre système d'enceintes à ces prises. 4-контактный разъем питания: Подключение PCI Express finger: Tilslut et PCI Express-stik fra et праγματοποιήστε σίγαση του ήχου πριν την Essence STX II 7.1 4. Remove the expansion slot covers of two PCI Express slots adjacent to each other. кабеля питания от блока питания. motherboard. 11. Sortie RCA centre/caisson de basses : connectez le haut- ενεργοποίηση.

[Page 2](#) I/O Ports I/O Ports Connectivity Options lydmodul. Ieşire coaxială S/PDIF: conectați la decodorul digital SWEDISH NOT: STX, karta güç vermek için 4 pimli Molex bağlantısı Connecting an iPhone / iPad / iPod / MP3 player Connecting to 5.1 / 7.1-channel speakers or system extern, la sistemul de difuzoare digital și al sistemul home 10. Side-RCA-utganger: Koble til sideinngangen på 5.1/7.1-kanal Höger främre RCA-utgång: Anslut till systemets högra gerektirir.