



# Recording A Tv Program - Toshiba D-R4SU Owner's Manual

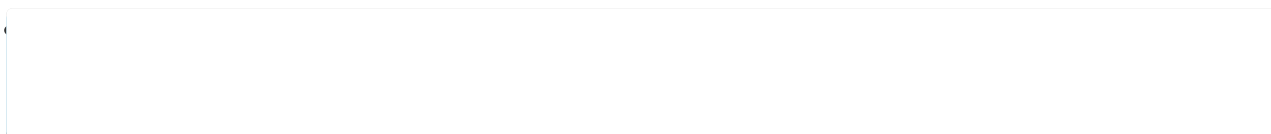


1
Table Of Contents
2
3
4
5
6
7
8
9
10
11
12
13
14
15
16
17

18  
19  
20  
21  
22  
23  
24  
25  
26  
27  
28  
29  
30  
31  
32  
33  
34  
35  
36  
37  
38  
39  
40  
41  
42  
43  
44  
45  
46  
47  
48  
49  
50  
51  
52  
53  
54  
55  
56  
57  
58  
59  
60  
61  
62  
63  
64  
65  
66  
67

68  
69  
70  
71  
72  
73  
74  
75  
76  
77  
78  
79  
80  
81  
82  
83  
84  
85  
86  
87  
88  
89  
90  
91  
92  
93  
94  
95  
96  
97  
98  
99  
100  
101  
102  
103  
104  
105  
106  
107  
108  
109  
110  
111  
112  
113  
114  
115  
116  
117

118  
119  
120  
121  
122  
123  
124  
125  
126  
127  
128  
129  
130  
131



•

## Table of Contents

- 

## Bookmarks

--







## Recording

DVD-RAM DVD-RW DVD-R

# Recording a TV program

## To record a TV Preparation

- Load a DVD-RAM/R/RW disc into the recorder.
- Load a disc which has sufficient space available to record the program.
- Make sure the loaded disc is not write-protected.
- If you record on a DVD-R or a DVD-RW disc, set "DVD compatible mode" (RW recording, "Off" setting is regarded as "Main.")
- If you record on a DVD-R or DVD-RW disc, set "Aspect ratio(Video mode)" (

sources.

OPEN/CLOSE  
DISPLAY FL SELECT DIMMER  
SUBTITLE AUDIO/SAP FREEZE  
ANGLE  
REMAIN REC MODE EXTEND



# Start

VOL  
MUTE  
TOP MENU  
INSTANT  
REPLAY  
QUICK MENU  
SKIP REV  
REV  
REC  
SEARCH

T  
1  
4  
7

Downloaded From Disc-Player.com Toshiba Manuals

## 34

# 1

PROGRESSIVE  
ZOOM  
SETUP  
CH  
TIMESLIP  
INPUT SELECT  
EASY  
MENU  
NAVI

# 2

TV  
DVD  
SELECT/  
ENTER  
INSTANT  
SKIP

# 3

STOP  
SKIP FWD  
PLAY  
FWD  
ADJUST  
CHP DIVIDE  
+ 10

2

3

5

6

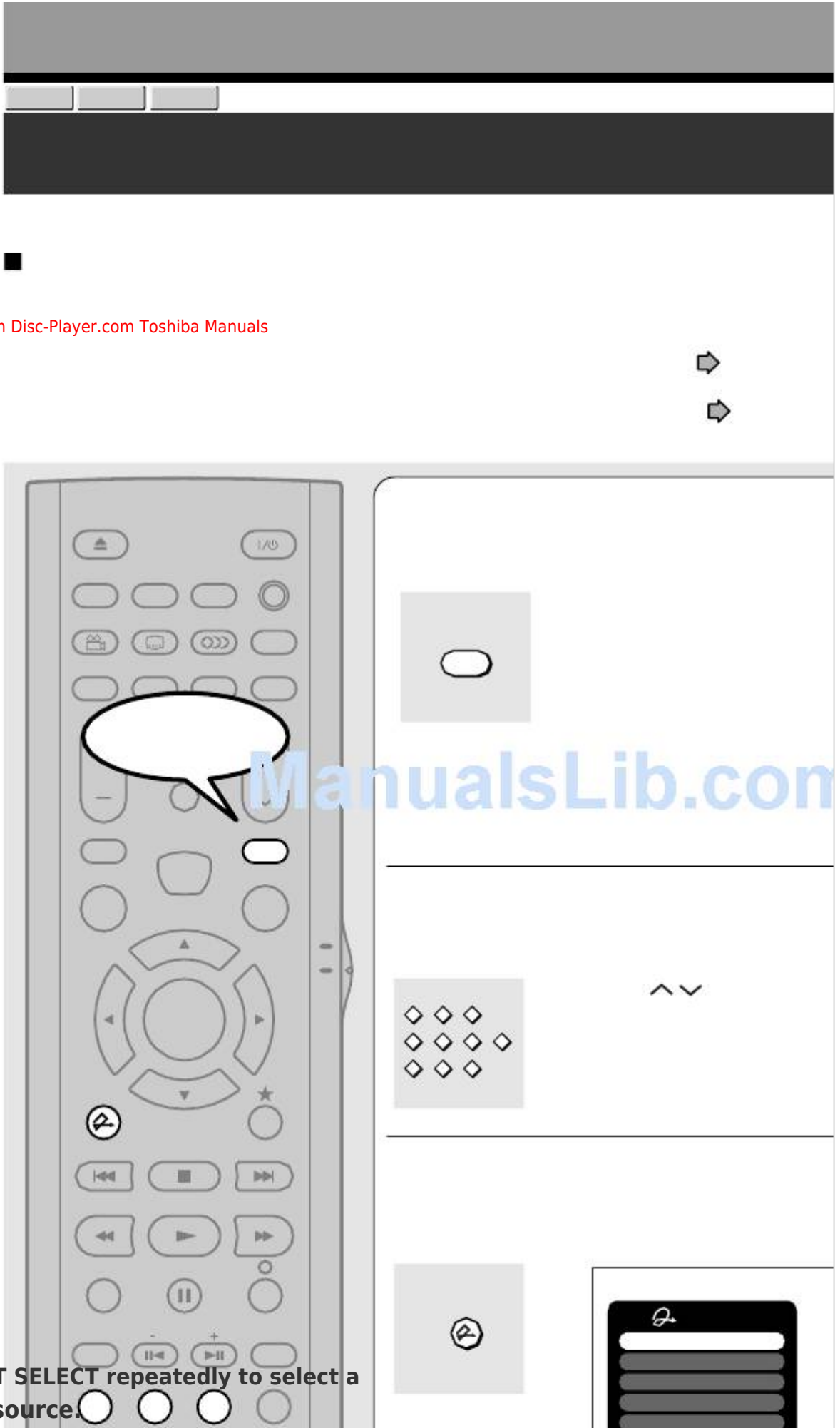
0

CLEAR

8

9

Press INPUT SELECT repeatedly to select a recording source.



Each time you press the button, the indicator alternates.

INPUT SELECT

**Ch-:**

To record a TV program or cable program with recorder tuner.

**L-1:**

To record a source connected to the INPUT1 jacks on the rear panel

**L-2:**

To record a source connected to the INPUT2 jacks on the front panel (

**Press the number buttons to select a channel to record.**

CH button (

- 1
- 2
- 3

To record a program from a connected tuner, select the

- 4
- 5
- 6
- 0

channel on the tuner.

- 7
- 8
- 9

**Press QUICK MENU to display Quick Menu.**

(If you want to use the default setting for "AV record quality," skip to step 7.)

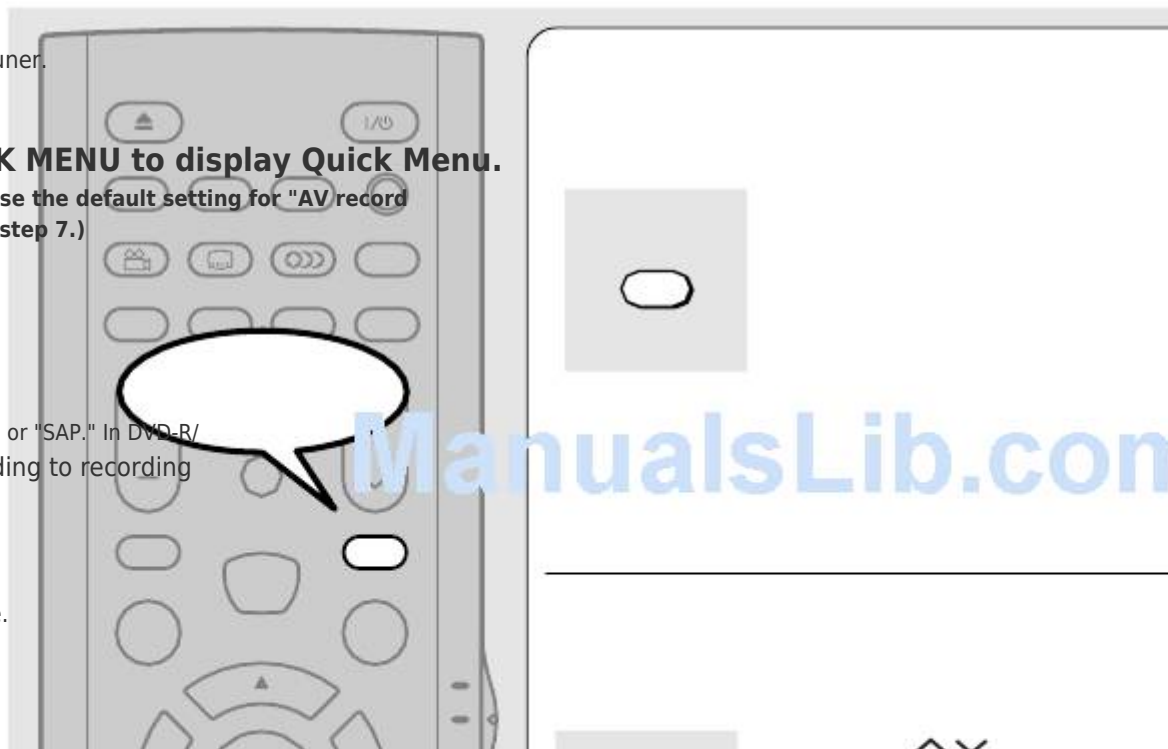
e.g.

QUICK MENU

page 33) to "Main" or "SAP." In DVD-R/ page 33) according to recording page 38).

/ ) is also available.

Bit rate



[Previous Page](#)  
[Next Page](#)

1  
...  
31  
32  
33  
34  
35  
36  
37  
38

Quick Links:

[Remote Control](#)

[Before Recording](#)

[Recording a Tv Program](#)

[Recording an External Source](#)

## Related Manuals for Toshiba D-R4SU

[DVD Recorder Toshiba D-R4SU Owner's Manual](#)

Dvd video recorder (195 pages)

[DVD Recorder Toshiba D-R4SC Owner's Manual](#)

Dvd video recorder (131 pages)

[DVD Recorder Toshiba D-R4SU Owner's Manual](#)

Dvd video recorder (53 pages)

[DVD Recorder Toshiba D-R4SU Service Manual](#)



Dvd video recorder (22 pages)

[DVR Toshiba D-KR4 Owner's Manual](#)

Toshiba d-kr4: installation guide (52 pages)

[DVR Toshiba D-R4 Specifications](#)

Digital video recorder (2 pages)

[DVR Toshiba DR420 Quick Manual](#)

Dvd video recorder (2 pages)

[DVR Toshiba D-R410KU Owner's Manual](#)

D-r410ku user's guide (101 pages)

[DVR Toshiba D-R410KU Service Manual](#)

Toshiba d-r410ku dvd video recorder service manual (66 pages)

[DVR Toshiba D-R420KU Owner's Manual](#)

D-r420ku user's guide (103 pages)

[DVR Toshiba DR420KU Owner's Manual](#)

Dvd video recorder (111 pages)

[DVR Toshiba DR430KU Owner's Manual](#)

Dr430ku user's guide (103 pages)

[DVR Toshiba DR430KU Owner's Manual](#)

Dvd video recorder (110 pages)

[DVR Toshiba D-R560KU Owner's Manual](#)

D-r560ku user's guide (117 pages)

[DVR Toshiba D-R550 Owner's Manual](#)

Dvd video recorder (125 pages)

[DVR Toshiba DR570KU Owner's Manual](#)

Toshiba dr570ku dvd video recorder owner's manual (123 pages)

## Related Content for Toshiba D-R4SU

[RD-XS30B Recording A Tv Programme](#)

Toshiba RD-XS30B

[RD-XS32SB Recording A Tv Programme](#)

Toshiba RD-XS32SB

[RD-XS34 Recording A Tv Programme](#)

Toshiba RD-XS34

[RD-XS32SB Recording A Tv Programme](#)

Toshiba RD-XS32SB

[Symbio 160HD4 One-Touch Recording Using The Tv Guide On Screen Listings Screen](#)

Toshiba Symbio 160HD4

[D-VR7KC2 Connecting To A Tv Using The S-Video Out Jack](#)

Toshiba D-VR7KC2

[RD-85DTSB Connecting An Aerial And Tv](#)

Toshiba RD-85DTSB

[RD99DTKB Tv System 2](#)

Toshiba RD99DTKB

This manual is also suitable for:

[D-r4scD-kr4su](#)