

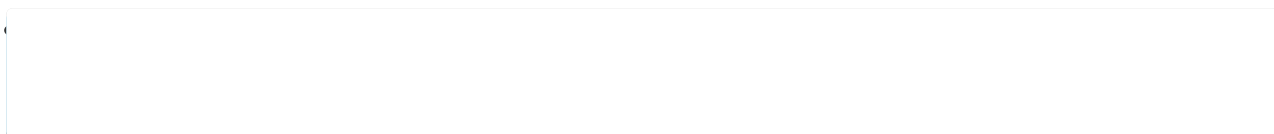
Selecting The Camera Angle - Toshiba D-R4SU Owner's Manual

1
Table Of Contents
2
3
4
5
6
7
8
9
10
11
12
13
14
15
16
17

18
19
20
21
22
23
24
25
26
27
28
29
30
31
32
33
34
35
36
37
38
39
40
41
42
43
44
45
46
47
48
49
50
51
52
53
54
55
56
57
58
59
60
61
62
63
64
65
66
67

68
69
70
71
72
73
74
75
76
77
78
79
80
81
82
83
84
85
86
87
88
89
90
91
92
93
94
95
96
97
98
99
100
101
102
103
104
105
106
107
108
109
110
111
112
113
114
115
116
117

118
119
120
121
122
123
124
125
126
127
128
129
130
131



•

Table of Contents

-

Bookmarks

--



Playback

DVD-VIDEO



If the scene was
you
are watching.



Start

OPEN/CLOSE
DISPLAY FL SELECT DIMMER
ANGLE
SUBTITLE AUDIO/SAP FREEZE
REMAIN REC MODE EXTEND
VOL
MUTE
TOP MENU
INSTANT
REPLAY
QUICK MENU
SKIP REV
REV



Notes

- You can also change the camera angle during still playback. The camera angle changes to the new setting when you resume normal playback.
- If you pause a p camera angle.
- Depending on a disc, the camera angle may not change even though the angle number changes.

Downloaded From Disc-Player.com Toshiba Manuals

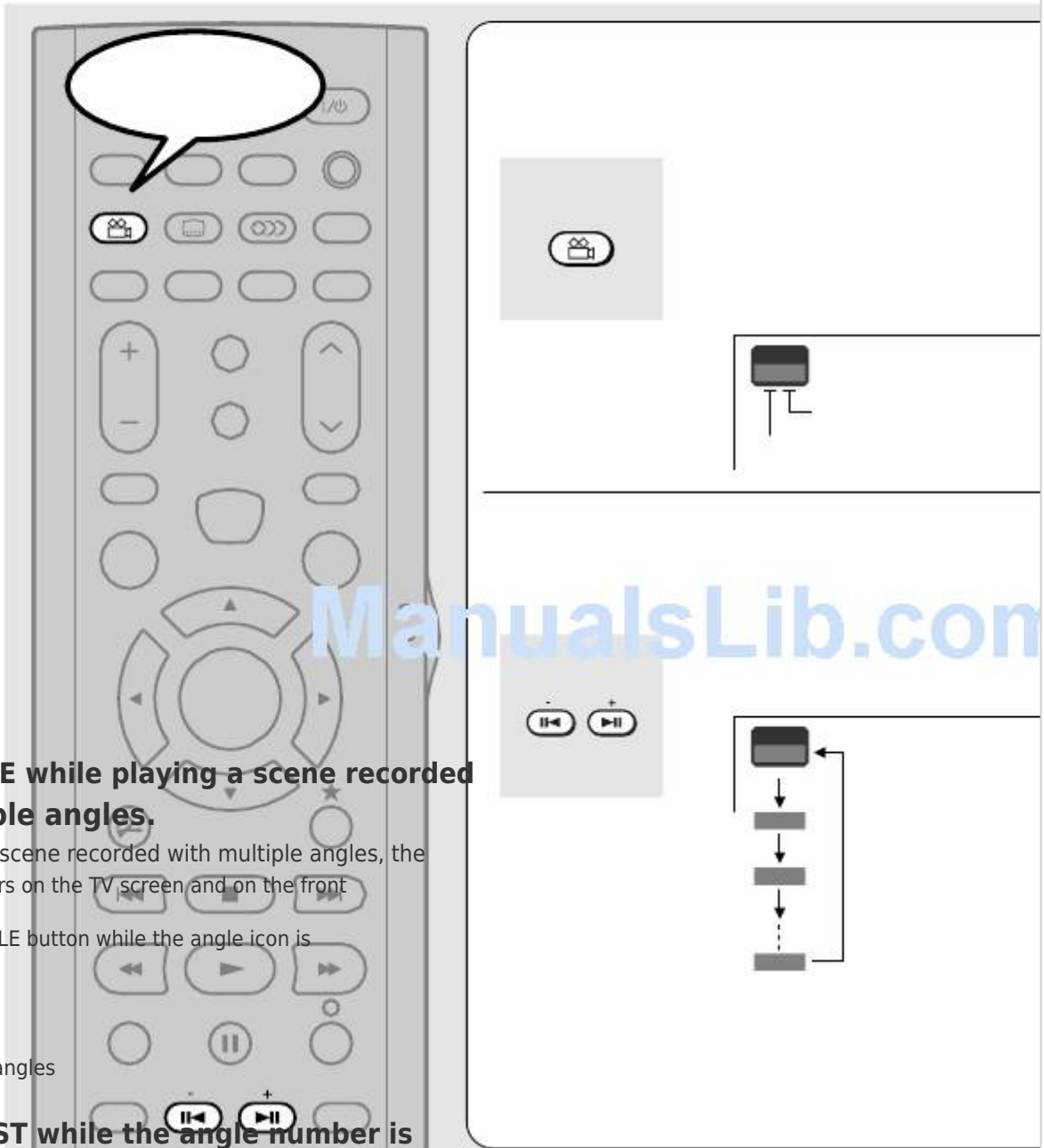
64

1

PROGRESSIVE
ZOOM
SETUP
CH
TIMESLIP
INPUT SELECT
EASY

2

MENU
NAVI
TV
DVD
SELECT/
ENTER
INSTANT
SKIP
STOP
SKIP FWD
PLAY
FWD
ADJUST
CHP DIVIDE



ManualsLib.com

Press ANGLE while playing a scene recorded with multiple angles.

While playing a scene recorded with multiple angles, the angle icon appears on the TV screen and on the front panel. Press ANGLE button while the angle icon is displayed.
e.g.

Total number of angles
Current selection

Press ADJUST while the angle number is displayed on the TV screen.

You can also select the camera angle by pressing ANGLE button several times.

ADJUST

- The angle icon disappears after about 3 seconds if no further selections are made.

[Table of Contents](#)

[Previous Page](#)
[Next Page](#)

1
...
61
62
63
64
65
66
67
68

Quick Links:

[Remote Control](#)

[Before Recording](#)

[Recording a Tv Program](#)

[Recording an External Source](#)

Related Manuals for Toshiba D-R4SU

[DVD Recorder Toshiba D-R4SU Owner's Manual](#)

Dvd video recorder (195 pages)

[DVD Recorder Toshiba D-R4SC Owner's Manual](#)

Dvd video recorder (131 pages)

[DVD Recorder Toshiba D-R4SU Owner's Manual](#)

Dvd video recorder (53 pages)

[DVD Recorder Toshiba D-R4SU Service Manual](#)

Dvd video recorder (22 pages)

[DVR Toshiba D-KR4 Owner's Manual](#)

Toshiba d-kr4: installation guide (52 pages)

[DVR Toshiba D-R4 Specifications](#)

Digital video recorder (2 pages)

[DVR Toshiba DR420 Quick Manual](#)

Dvd video recorder (2 pages)

[DVR Toshiba D-R410KU Owner's Manual](#)

D-r410ku user's guide (101 pages)

[DVR Toshiba D-R410KU Service Manual](#)

Toshiba d-r410ku dvd video recorder service manual (66 pages)

[DVR Toshiba D-R420KU Owner's Manual](#)

D-r420ku user's guide (103 pages)

[DVR Toshiba DR420KU Owner's Manual](#)

Dvd video recorder (111 pages)

[DVR Toshiba DR430KU Owner's Manual](#)

Dr430ku user's guide (103 pages)

[DVR Toshiba DR430KU Owner's Manual](#)

Dvd video recorder (110 pages)

[DVR Toshiba D-R560KU Owner's Manual](#)

D-r560ku user's guide (117 pages)

[DVR Toshiba D-R550 Owner's Manual](#)

Dvd video recorder (125 pages)

[DVR Toshiba DR570KU Owner's Manual](#)

Toshiba dr570ku dvd video recorder owner's manual (123 pages)

Related Content for Toshiba D-R4SU

[SD-1600 Selecting The Camera Angle](#)

Toshiba SD-1600

[SD-100X Selecting The Camera Angle](#)

Toshiba SD-100X

[RD-XS30B Selecting The Camera Angle](#)

Toshiba RD-XS30B

[D-VR7KC2 Selecting Tv Audio](#)

Toshiba D-VR7KC2

[RD-XS34S Angle Subtitle Audio Channel](#)

Toshiba RD-XS34S

[RD99DTKB Angle Icon](#)

Toshiba RD99DTKB

[D-RW2SU Selecting Tv Stereo Or Sap](#)

Toshiba D-RW2SU

[v632uk Selecting The Colour Mode](#)

Toshiba v632uk

This manual is also suitable for:

[D-r4scD-kr4su](#)