



# Outdoor Fan Motor - Sanyo SAP-KMV91G-S Technical & Service Manual

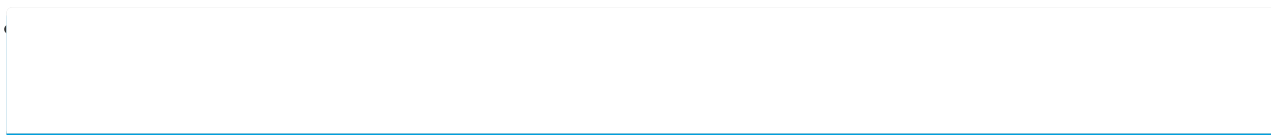
Inverter multi-split system air conditioner



1  
2  
3  
4  
5  
6  
7  
8  
9  
10  
11  
12  
13  
14  
15  
16  
17  
18

19  
20  
21  
22  
23  
24  
25  
26  
27  
28  
29  
30  
31  
32  
33  
34  
35  
36  
37  
38  
39  
40  
41  
42  
43  
44  
45  
46  
47  
48  
49  
50  
51  
52  
53  
54  
55  
56  
57  
58  
59  
60  
61  
62  
63  
64  
65  
66  
67  
68

69  
70  
71  
72  
73  
74  
75  
76  
77  
78



•

- 

Troubleshooting

•

## Bookmarks







#### 11-4-8. Fuse

Check for continuity by observation or with a tester.

- Check for continuity by observation or with a tester.

#### 11-4-9. Compressor

Check for bad connections, short circuit or insulation failure of the compressor windings.

- Check for bad connections, short circuit or insulation failure of the compressor windings.

It should be checked in the following sequence:

#### 11-4-10. HIC

It should be checked in the following sequence:

- (1) Disconnect +, -, U, V and W terminals.
- (2) Using an analog tester (set to ×100 range), measure the resistance between terminals in the following table.

+ (1) Disconnect +, -, U, V and W terminals.

- (2) Using an analog tester (set to ×100 range), measure the resistance between terminals

Tester bar

Tester bar

Resistance

NOTE

### 11-4-8. Fuse

● Check for continuity by observation or with a tester.

### 11-4-11. Diode Module

Check each diode of the diode module separately.

Polarity of tester

### 11-4-9. Compressor

● Check for bad connections, short circuit or insulation failure of the compressor wind

### 11-4-10. HIC

It should be checked in the following sequence:

#### Procedure

(1) Disconnect +, -, U, V and W terminals.

(2) Using an analog tester (set to  $\times 100$  range), measure the resistance between termi

Tester bar $\oplus$	HIC Terminal								
	+			-			U	V	W
Tester bar $\ominus$	U	V	W	U	V	W	+		
Resistance	around 500 - 1,000 $\Omega$			$\infty$			$\infty$		

### 11-4-12. Outdoor Fan Motor

Gently rotate the fan by hand.

If the fan rotates easily:

**NOTE**

● Use  $\times 100$  range of circuit tester to confirm approximate values between 500 and 1,000 ohms. The HIC can be judged normal if U, V and W all show the same resistance.

- Check for problems with motor-run capacitor, which is located on the Control PCB in Outdoor Unit.
- Check for bad connections to the fan motor winding.
- Measure the voltage across the outdoor fan motor terminals in the AC range with a tester.

### 11-4-11. Diode Module

If the tester indi-

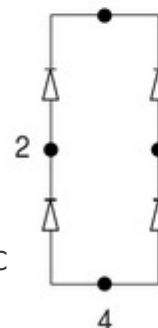
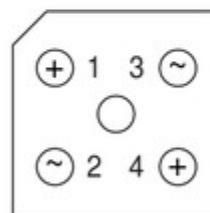
● Check each diode of the diode module separately.

If the fan will not rotate at all:

- Check if an obstruction is touching the fan, or if the fan itself is making contact with the outer frame.
- If the above yields no problem, the bearings in the fan motor may have overheated and become damaged.

Replace the fan motor as a whole.

Polarity of tester	Resistance	
	$\oplus$	$\ominus$
1	2	$10 \Omega - 100 \Omega$
2	1	$\infty$
3	4	$10 \Omega - 100 \Omega$
4	3	$\infty$



Use  $\times 100$  range of circuit tester to confirm approximate values between 500 and 1,000 ohms. The HIC can be judged normal if U, V and W all show the same resistance.

Resistance

$10 \frac{1}{2} - 100 \frac{1}{2}$

$10 \frac{1}{2} - 100 \frac{1}{2}$

o

$10 \frac{1}{2} - 100 \frac{1}{2}$

### 11-4-12. Outdoor Fan Motor

Gently rotate the fan by hand.

10 ½ - 100 ½

### 11-4-8. Fuse

- Check for continuity by observation or with a tester.

HIC Terminal

### 11-4-9. Compressor

- Check for bad connections, short circuit or insulation failure of the compressor wind

-

W

U

V

W

o

### 11-4-10. HIC

It should be checked in the following sequence:

o

#### Procedure

+

(1) Disconnect +, -, U, V and W terminals.

~

1

(2) Using an analog tester (set to ×100 range), measure the resistance between terminal

3

~

+

2

4

42

U

V

W

U

+

o

	HIC Terminal								
Tester bar ⊕	+			-			U	V	W
Tester bar ⊖	U	V	W	U	V	W	+		
Resistance	around 500 – 1,000 Ω			∞			∞		

#### **NOTE**

- Use ×100 range of circuit tester to confirm approximate values between 500 and 1,000 Ω. Resistance can be judged normal if U, V and W all show the same resistance.

around 500 - 1,000 ½

### 11-4-11. Diode Module

1

- Check each diode of the diode module separately.

2

3

4

V

W

-

Polarity of tester		Resistance
⊕	⊖	

[Table of Contents](#)

[Previous Page](#)  
[Next Page](#)

1  
...  
43  
44  
45  
46  
47  
48  
49  
50

Quick Links:

[Specifications in Combination with Indoor Units](#)

## Chapters

[Table of Contents](#) 3

[Table of Contents](#) 53

## Troubleshooting

[TROUBLESHOOTING](#) 41

[Troubleshooting Using the Self-Diagnostic Monitor](#) 42

[Troubleshooting](#) 77



## Related Manuals for Sanyo SAP-KMV91G-S

[Air Conditioner Sanyo SAP-KMRV74EH Installation Instructions Manual](#)

Inverter multi split system air conditioner (28 pages)

[Air Conditioner Sanyo SAP-CMRV1424EH Technical & Service Manual](#)

Dc inverter multi-system air conditioner (114 pages)

[Air Conditioner Sanyo SAP-KMRV74EH Installation Instructions Manual](#)

Inverter split system air conditioner (24 pages)

[Air Conditioner Sanyo SAP-CMRV1426EH Technical & Service Manual](#)

(148 pages)

[Air Conditioner Sanyo SAP-KM97AHA Technical & Service Manual](#)

Multi-split system air conditioner (50 pages)

[Air Conditioner Sanyo SAP-KM97GHS5A Technical & Service Manual](#)

Multi-split system air conditioner (48 pages)

[Air Conditioner Sanyo SAP-CMRV3143GJH Technical & Service Manual](#)

Dc inverter multi-system air conditioner (45 pages)

[Air Conditioner Sanyo SAP-KMRV93GJH Technical & Service Manual](#)

Dc inverter multi-system air conditioner (64 pages)

[Air Conditioner Sanyo SAP-K9AP Instruction Manual](#)

Split system air conditioner (37 pages)

[Air Conditioner Sanyo SAP-KRV9AG Instruction Manual](#)

Inverter-controlled split system air conditioner (22 pages)

[Air Conditioner Sanyo SAP-KRV123EH Technical & Service Manual](#)

Dc inverter split system air conditioner (77 pages)

[Air Conditioner Sanyo SAP-CRV93EHN Technical & Service Manual](#)

Dc inverter split system air conditioner (77 pages)

[Air Conditioner Sanyo SAP-KRV94EHDX Technical & Service Manual](#)

Dc inverter split system air conditioner (85 pages)

[Air Conditioner Sanyo SAP-KRV9AEH Service Manual](#)

Dc inverter split system air conditioner (108 pages)

[Air Conditioner Sanyo SAP-K181AHA-S Technical & Service Manual](#)

(78 pages)

[Air Conditioner Sanyo SAP-K181AA Technical & Service Manual](#)

Split system air conditioner (66 pages)

## Related Content for Sanyo SAP-KMV91G-S

[CH3082 Outdoor Fan Motor](#)

Sanyo CH3082

[CH1872 Outdoor Fan Motor](#)

Sanyo CH1872

[C3082 Outdoor Fan Motor](#)

Sanyo C3082

[C1872 Outdoor Fan Motor](#)

Sanyo C1872

[XS3632 Outdoor Fan Speed Control.24](#)

Sanyo XS3632

[KS3032 Outdoor Fan Speed Is Not Switched From High To Low Even When The Outdoor Temperature Falls Below 78 °F \(C3032, C3632 Type\)](#)

Sanyo KS3032

[SAP-K181AA Outdoor Fan Speed Control](#)

Sanyo SAP-K181AA

[CHDZ07263 Ac Fan Motor \(For Cr-Uhx0762\)](#)

Sanyo CHDZ07263

This manual is also suitable for:

[Sap-kmv181g-sSap-cmv2441g](#)