



# Installing The Drain Piping; Checking The Drainage - Sanyo ECO R410A Installation Instructions Manual

Eco-i system air conditioner



1  
2  
3  
4  
5  
6  
7  
8  
9  
10  
11  
12  
13  
14  
15  
16  
17

Table Of Contents

18  
19  
20  
21  
22  
23  
24  
25  
26  
27  
28  
29  
30  
31  
32  
33  
34  
35  
36  
37  
38  
39  
40  
41  
42  
43  
44  
45  
46  
47  
48

--

•

[Table of Contents](#)

- 

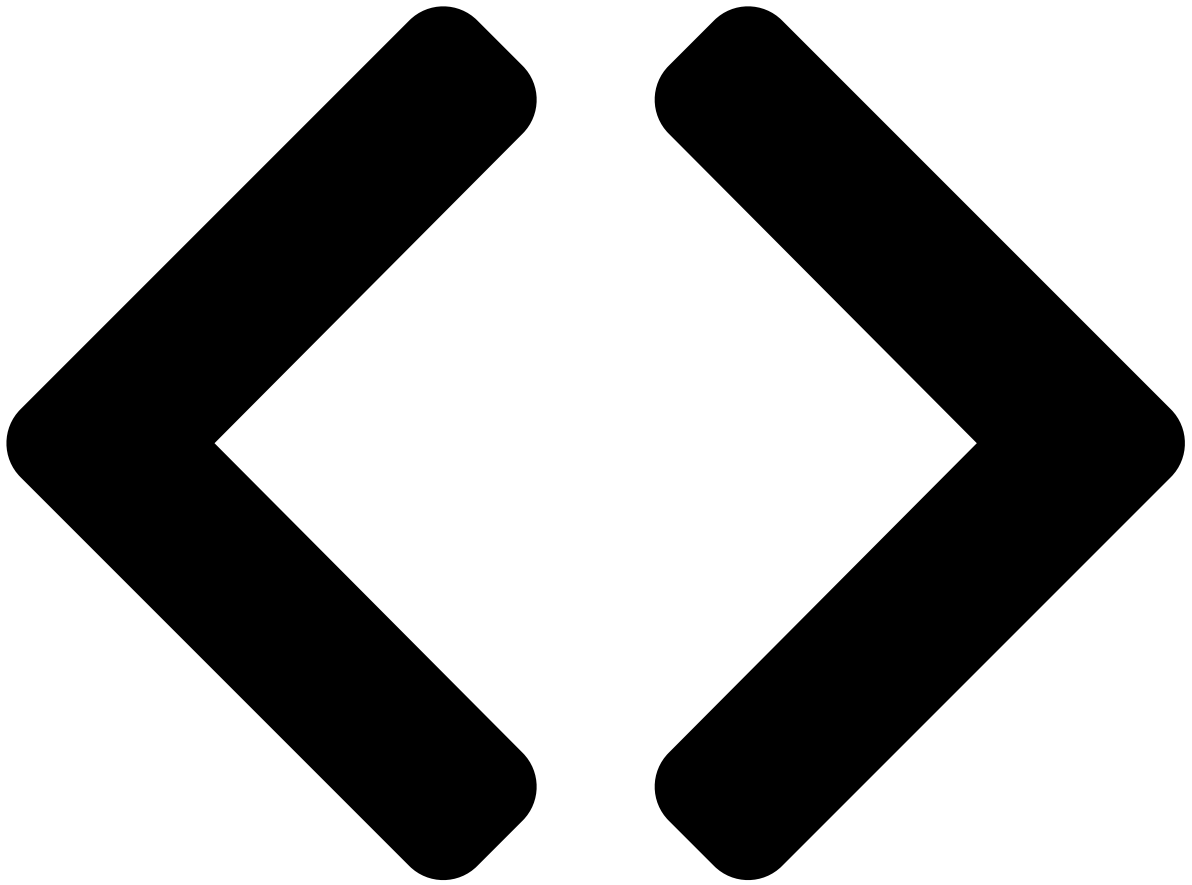
Troubleshooting

•

## Bookmarks







Enlarged version

### 3-13. Installing the Drain Piping

(1) Prepare standard hard PVC pipe (O.D. 1-1/32") for the drain and use the supplied hose band to prevent water leaks.

The PVC pipe must be purchased separately. The transparent drain part on the unit allows you to check drainage.

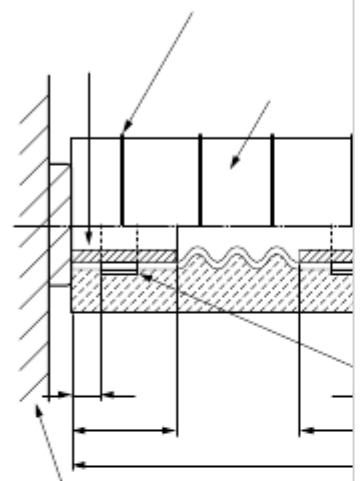
#### CAUTION



Do not use adhesive at the drain connection port on the indoor unit.




Insert the drain pipe until it contacts the socket, as



shown in the figure at right, then secure it tightly with the hose band.

● Do not use the supplied drain hose bent at a 90° angle. (The maximum permissible bend is 45°.)


● Tighten the hose clamps so their locking nuts face in the horizontal direction.


●  Make sure that the drain port is not a downward gradient from the joint section (may lead to abnormal noise).

Make sure the drain pipe has a downward gradient (1/100 or more) and that there are no water traps.

### CAUTION

● If it is necessary to increase the height of the drain pipe, the section directly after the connection port can be raised a maximum of 19-11/16". Do not raise it any higher than 19-11/16", as this could result in water leaks.

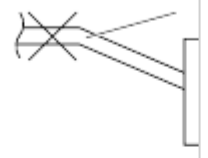
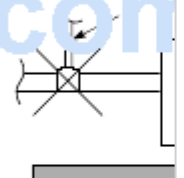
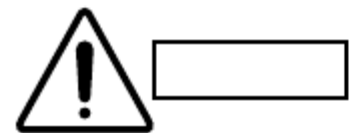
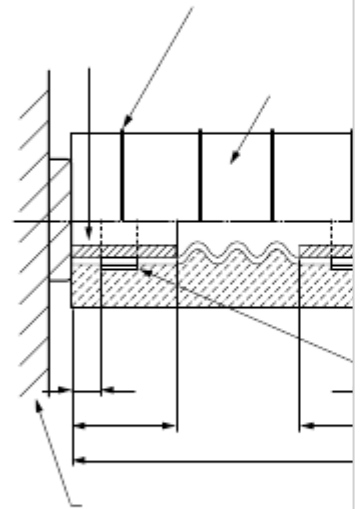
●  Do not install the pipe with an upward gradient from the connection port. This will cause the drain water to flow backward and leak when the unit is not operating.

●  Do not apply force to the piping on the unit side when connecting the drain pipe. The pipe should not be allowed to hang unsupported from its connection to the unit. Fasten the pipe to a wall, frame, or other support as close to the unit as possible.

### 3-14. Checking the Drainage

After wiring and drain piping are completed, use the following procedure to check that the water will drain smoothly. For this, prepare a bucket and wiping cloth to catch and wipe up spilled water.

- (1) Connect power to the power terminal board (R, S terminals) inside the electrical component box.
- (2) Remove the eyelet cap and through the opening, slowly pour about 0.13gal of water into the drain pan to check drainage.
- (3) Short the check pin (CHK) on the indoor control board and



ManualsLib.com

operate the drain pump. Check the water flow through the transparent drain port and see if there is any leakage.

●  
Do not install an air bleeder as this may cause water to spray from the drain pipe outlet.

Twist tie  
(4 ties, supplied)

Drain hose  
insulation

Drain port  
(supplied)

13/64

1

5-33/64

Unit

**CAUTION**

**Prohibited**

at least 1/100

**Good**

**Prohibited**

**18**

Hard PVC pipe

Position to

(equivalent to

fasten hose

O.D. 1-1/32")

bands

(Field Supply)

Drain hose

(supplied)

13/64

1

Hose band

(2 bands, supplied)

**Fig. 3-29**

●  
**Attach so that the hose band fastener is on the side of the drain port.**

●  
**Attach the hose bands so that each is approximately 1/4" to 1" from the end of the supplied drain hose.**

Air bleeder

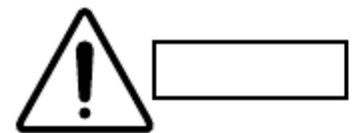
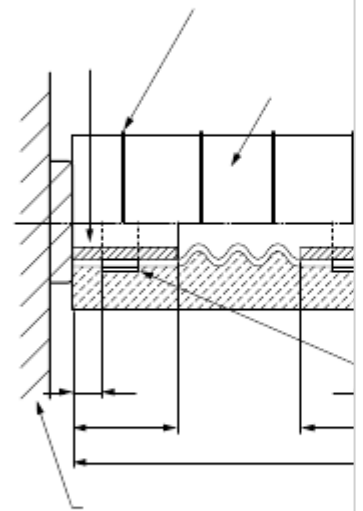
**Fig. 3-30**

11-13/16" or less

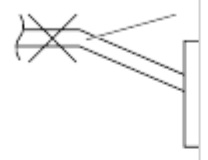
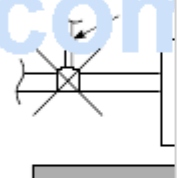
(not a downward gradient)

19-11/16" or less

**Fig. 3-31**



ManualsLib.com



Upward gradient

**Fig. 3-32**

Support pieces

**Fig. 3-33**

Unit: in.

/

[Table of Contents](#)

[Previous Page](#)

[Next Page](#)

1  
...  
15  
16  
17  
18  
19  
20  
21  
22

Quick Links:

[Indoor Unit](#)

[Installing the Drain Piping](#)

[Name of Parts](#)

[Care and Cleaning](#)

[Troubleshooting](#)

## Related Manuals for Sanyo ECO R410A

[Air Conditioner Sanyo ECO-i AHX0752 Technical Data Manual](#)

(265 pages)

[Air Conditioner Sanyo MINI ECO-i XHX1252 Service Manual & Test Run Service Manual](#)

(190 pages)

[Air Conditioner Sanyo ECO-i CHDZR07263 Series Service Manual](#)

(146 pages)



[Air Conditioner Sanyo CHDXR09663\\* Service Manual](#)

2-way eco-i multi system (142 pages)

[Air Conditioner Sanyo CHDZ07263 Service Manual](#)

(128 pages)

[Air Conditioner Sanyo AHX0752 Service Manual](#)

W-2way eco-i multi system (114 pages)

[Air Conditioner Sanyo W-3WAY ECO-i 85464369098000 Installation Instructions Manual](#)

W-3way eco-i system air conditioner (106 pages)

[Air Conditioner Sanyo 85464359982001 Installation Instructions Manual](#)

W-2way system air conditioner (96 pages)

[Air Conditioner Sanyo Mini ECO-i CHXR03652 Service Manual](#)

(93 pages)

[Air Conditioner Sanyo Mini ECO-i 85464359981002 Installation Instructions Manual](#)

Sanyo air conditioner installation instructions (90 pages)

[Air Conditioner Sanyo R410A Installation Instructions Manual](#)

W-3way eco-i system air conditioner (54 pages)

[Air Conditioner Sanyo XM18AAB Installation Instructions Manual](#)

W-2way system air conditioner (50 pages)

[Air Conditioner Sanyo XHX1252 Instruction Manual](#)

Split system air conditioner (20 pages)

[Air Conditioner Sanyo THX2452 User Manual](#)

(4 pages)

[Air Conditioner Sanyo DHX4852 Manual](#)

Indoor unit (4 pages)

[Air Conditioner Sanyo THX1852 Manual](#)

Indoor unit (4 pages)

## Related Content for Sanyo ECO R410A

[XMS1272 Installing The Drain Piping](#)

Sanyo XMS1272

[CH2442 Installing The Drain Piping](#)

Sanyo CH2442

[W-3WAY ECO-i 85464369098000 Installing The Drain Piping](#)

Sanyo W-3WAY ECO-i 85464369098000

[Mini ECO-i 85464359981002 Installing The Drain Piping](#)

Sanyo Mini ECO-i 85464359981002

[PNR-XS2432 Installing The Drain Piping](#)

Sanyo PNR-XS2432

[C4272R S/C Installing The Drain Piping](#)

Sanyo C4272R S/C

[85464359982001 Installing The Drain Piping](#)

Sanyo 85464359982001

This manual is also suitable for:

[Xhx1252Xhx1852Xhx2452Xhx365Xmhx1252Xmhx1852](#) ... [Show all](#)