

Wiring System Diagrams - Sanyo KH2442 / CH2442 Service Manual

Split system air conditioner

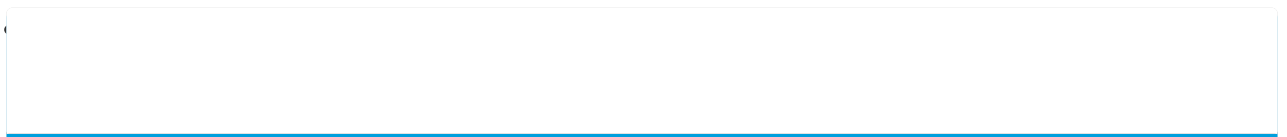
1
2
3
4
5
6
7
8
9
10
11
12
13
14
15
16
17
18

19
20
21
22
23
24
25
26
27
28
29
30
31
32
33
34
35
36
37
38
39
40
41
42
43
44
45
46
47
48
49
50
51
52
53
54
55
56
57
58
59
60
61
62
63
64
65
66
67
68

69
70
71
72
73
74
75
76
77
78
79
80
81
82
83
84
85
86
87
88
89
90
91
92
93
94
95
96
97
98
99
100
101
102
103
104
105
106
107
108
109
110
111
112
113
114
115
116
117
118

119
120
121
122
123
124
125
126
127
128
129
130
131
132
133
134
135
136
137
138
139
140
141
142
143
144
145
146
147
148
149
150
151
152
153
154
155
156
157
158
159
160
161
162
163
164
165
166
167
168

169
170
171
172
173
174
175
176
177
178
179
180
181
182
183
184
185
186
187
188
189
190
191
192
193
194
195
196
197
198
199
200
201
202



•

[Table of Contents](#)

-

Troubleshooting

•

Bookmarks



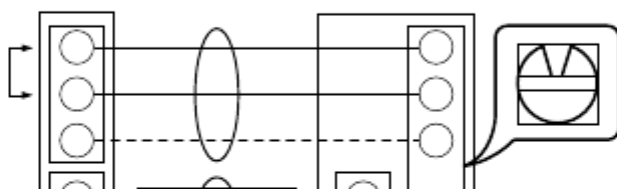
Wiring System Diagrams

(1) Basic wiring diagram for standard control

Inter-unit
power wiring
Single phase
230/208V
Inter-unit
control wiring
(Low voltage) ●
Remote controller
(Option)
*Remote controller wirings are wire joint connection.

NOTE

(1)
Refer to "Recommended Wire Length and Wide
Diameter for Power Supply System" for the
explanation of "A", "B", "C", "D", and "E", in the



above diagrams.

(2)

Inter-Unit Control Wiring (C) and remote controller wiring (D), (E) has no polarity.

But for other wiring, respect polarity.

Be sure to connect as shown in the Wiring System Diagram.

(3)

R.C. Address should be set before turning the power on.

(4)

Regarding the R.C. Address setting, refer to Auto. address setting can be executed by a remote controller automatically.

Indoor Unit

B

1

2

G

Ground

U1

U2

C

1

1

1

2

2

2

D



Outdoor Unit

R.C. Address on the PCB: 0 (S2, BLK)

1

0

(0: Factory shipped state)

2

G

U1

U2

L1

L2

G

Ground

A

5P terminal board + 2P terminal board

1 2

G

Inter-unit

power wiring

XH, TH, UH Type

5P terminal board

1 2

U1

U2

Remote

Inter-unit

Inter-unit

controller wiring

power wiring

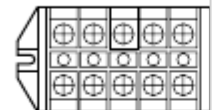
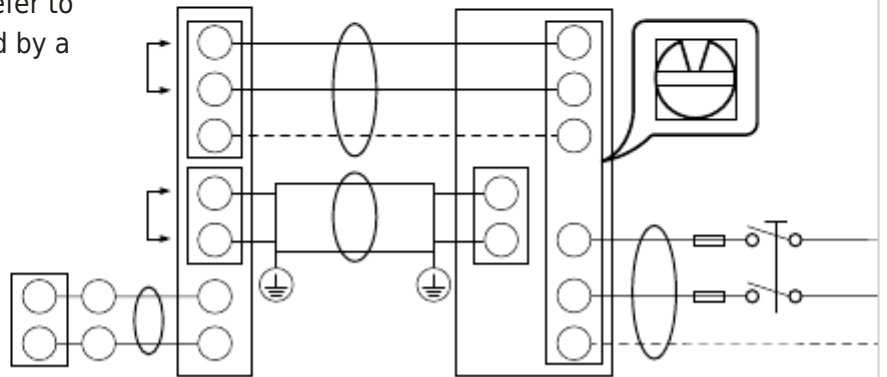
control wiring

2087_M_1

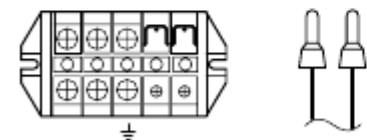
I - 105

1. Specifications

L1



ManualsLib.com

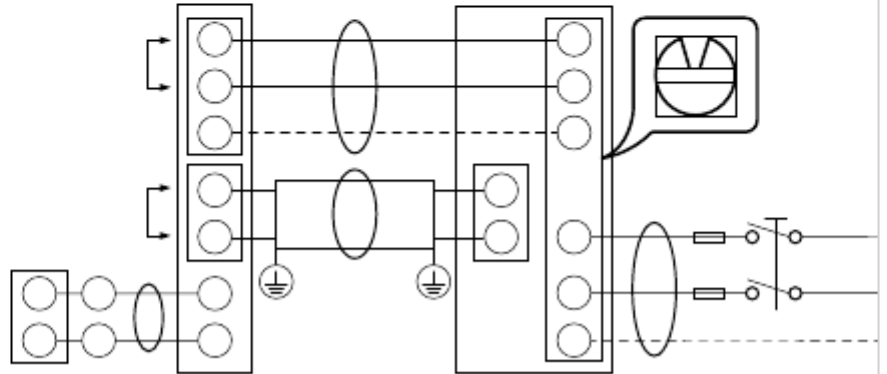


Power supply
Single phase
L2
230/208V
2085_M_1
CH Type
L1
L2
U1
U2

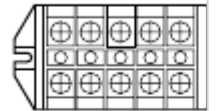
Power
Inter-unit
supply
control wiring
2086_M_1

KH Type
4P terminal board
U1 U2

1 2
Remote
Inter-unit
Inter-unit
controller wiring
control wiring
power wiring
2103_M_1
2088_M_1
SM830082



2103_M_1



[Table of Contents](#)

[Previous Page](#)
[Next Page](#)

1

...

108

109

110

111

Quick Links:

[Technical Data](#)

[Service Manual](#)

[Unit Specifications](#)

[Troubleshooting](#)

Chapters

[Who Should Use This Manual](#) 3

[2. Processes and Functions](#) 121

[4. Service Procedures](#) 157

Troubleshooting

[Troubleshooting](#) 158

[Check before and after Troubleshooting](#) 159

[General Troubleshooting Flow Chart: Diagnosis and Remedy](#) 160

Related Manuals for Sanyo KH2442 / CH2442

[Air Conditioner Sanyo CH2442 Installation Instructions Manual](#)

Split system heat pump air conditioner (94 pages)

[Air Conditioner Sanyo RCS-SH80UA Instruction Manual](#)

Split system air conditioner (64 pages)

[Air Conditioner Sanyo 26K72R Dimensional Data](#)

Wall mounted type outdoor/indoor unit (1 page)

[Air Conditioner Sanyo C4272R S/C Installation Instructions Manual](#)

Sanyo split system heat pump air conditioner installation instructions (111 pages)

[Air Conditioner Sanyo C4272R Service Manual](#)

Sanyo split system air conditioner service manual (181 pages)

[Air Conditioner Sanyo RCS-BH80UA.WL Instruction Manual](#)

Split system air conditioner (48 pages)

[Air Conditioner Sanyo Mini ECO-i CHXR03652 Service Manual](#)

(93 pages)

[Air Conditioner Sanyo CHDZ07263 Service Manual](#)

(128 pages)

[Air Conditioner Sanyo Mini ECO-i 85464359981002 Installation Instructions Manual](#)

Sanyo air conditioner installation instructions (90 pages)

[Air Conditioner Sanyo CH0951 Technical & Service Manual](#)

Split system air conditioner (98 pages)

[Air Conditioner Sanyo KHS1822 Service Manual](#)

Split system air conditioner (38 pages)

[Air Conditioner Sanyo KHS3632 / CH3632 Service Manual](#)

Split system air conditioner (94 pages)

[Air Conditioner Sanyo 18KHS72 Installation Instructions Manual](#)

Indoor/outdoor unit inverter split system air conditioner (25 pages)

[Air Conditioner Sanyo 09KHS71 Instruction Manual](#)

Inverter-controlled split system air conditioner (50 pages)

[Air Conditioner Sanyo COOL/HEAT Installation Instructions Manual](#)

Split system air conditioner (20 pages)

[Air Conditioner Sanyo KHS1232 Technical Data Manual](#)

(24 pages)

Related Content for Sanyo KH2442 / CH2442

[C4272R S/C Wiring System Diagrams](#)

Sanyo C4272R S/C

[SAP-K181AA Electric Wiring Diagrams](#)

Sanyo SAP-K181AA

[XM18AAB Wiring System Diagram](#)

Sanyo XM18AAB

[CM2472 Electric Wiring Diagrams](#)

Sanyo CM2472

[SAP-K71GJA-S Electric Wiring Diagrams](#)

Sanyo SAP-K71GJA-S

[KHS1232 Electric Wiring Diagrams](#)

Sanyo KHS1232

[STW-2 Series Electrical Wiring Diagrams](#)

Sanyo STW-2 Series

[C2432A Wiring System Diagram](#)

Sanyo C2432A

This manual is also suitable for:

[Th4242Uh2442Kh3642Uh3642Xh2442Xh3642](#) ... [Show all](#)