

TOSHIBA

Toshiba Digital 19EL93 Series Owner's Manual

1	
Table Of Contents	
2	
3	
4	
5	
6	
7	
8	
9	
10	
11	
12	
13	
14	
15	
16	
17	

18
19
20
21
22
23
24
25
26
27
28
29
30
31
32
33
34
35
36
37
38
39
40
41

•

[Table of Contents](#)

•

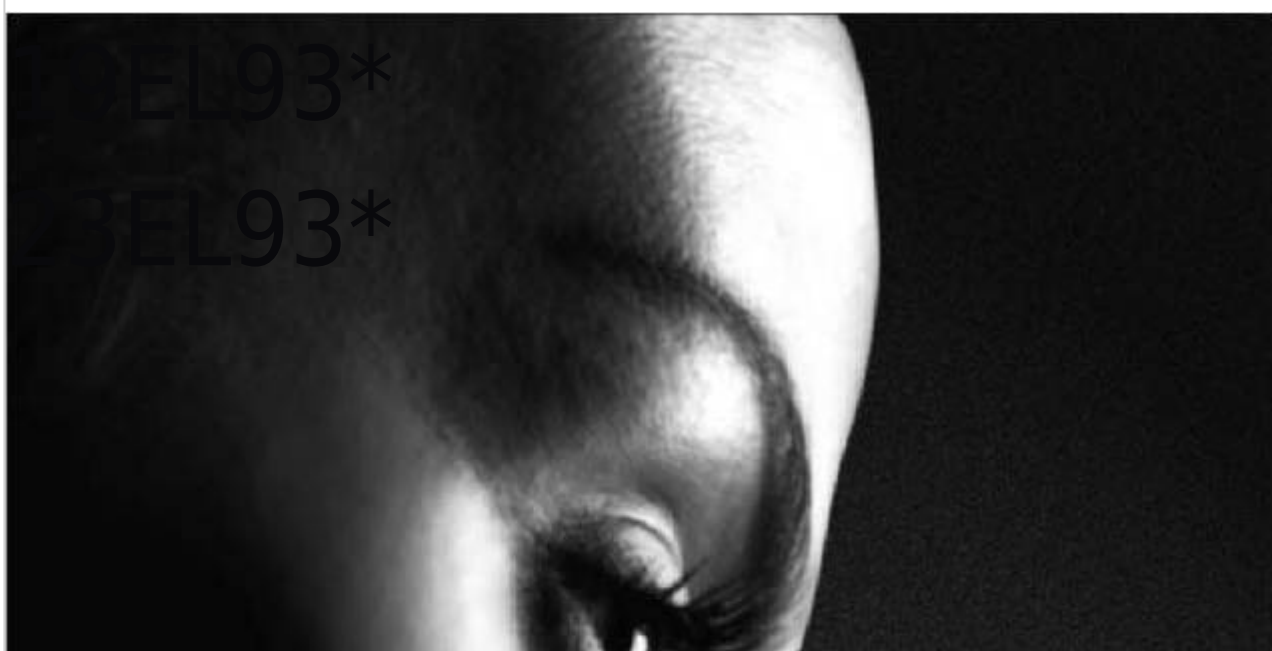
Bookmarks

--

[Download this manual](#)

Quick Links





T
Le

[Table of Contents](#)

[Next Page](#)

1
2
3
4
5

Related Manuals for Toshiba Digital 19EL93 Series

[Speakers Toshiba e-STUDIO5540C Software Installation Manual](#)

Multifunctional digital systems (238 pages)

[All in One Printer Toshiba e-STUDIO6540C Management Manual](#)

Multifunctional digital color systems / multifunctional digital systems (192 pages)

[LCD TV Toshiba DIGITAL Series User Manual](#)

(57 pages)

[Flat Panel TV Toshiba 40BL702B Owner's Manual](#)

Digital series (50 pages)

[TV Toshiba 32BV501B User Manual](#)

Digital series (49 pages)

[LCD TV Toshiba 40BV701B User Manual](#)

(48 pages)

[TV Toshiba 22BL704B Owner's Manual](#)

Digital series (48 pages)

[TV Toshiba 32BV801B User Manual](#)

Digital series (45 pages)

[Monitor Toshiba LED TV Series Owner's Manual](#)

(22 pages)

[Air Conditioner Toshiba RAS-10~16 SKV\(R\) Series Owner's Manual](#)

Split type (4 pages)

[Storage Toshiba MK1031 Installation Notes](#)

(4 pages)

[LED TV Toshiba 19L4200U User Manual](#)

Integrated high definition led television (141 pages)

[LED TV Toshiba 19L4200UOM User Manual](#)

Integrated high definition led television (139 pages)

[LED TV Toshiba 19SL400U Datasheet](#)

720p hd led tv (2 pages)

[LED TV Toshiba 32L3300 Series Owner's Manual](#)

(54 pages)

[LED TV TOSHIBA 65L7300U User Manual](#)

(98 pages)

Summary of Contents for Toshiba Digital 19EL93 Series

[Page 1](#) 19EL93* 23EL93*...

[Page 2: Table Of Contents](#)

Contents Safety Precautions2 Setting Subtitles19 Air Circulation 2 Audio
Language19 Heat Damage.....2 Parental Control19 Mains Supply2
Common Interface19 Warning 2 Setting Timer 20 Do 2
Viewing Teletext

[Page 3: Safety Precautions](#)

Safety Precautions This equipment has been designed and manufactured to meet international safety standards but, like any electrical equipment, care must be taken to obtain the best results and for safety to be assured. Please read the points below for your own safety.

[Page 4: Installation And Important Information](#)

Furthermore, under no circumstances shall Toshiba be liable for any consequential loss and/or damage including but not limited to the following, loss of profit, interruption of business, the loss of recorded data whether caused during normal operation or misuse of the product.

[Page 5: Important Safety Information](#)

Important safety information WHEN THIS UNIT IS PLUGGED INTO THE WALL OUTLET, DO NOT PLACE YOUR EYES CLOSE TO THE OPENINGS TO LOOK INTO THE INSIDE OF THIS UNIT. USE OF CONTROLS OR ADJUSTMENTS OR PERFORMANCE OF PROCEDURES OTHER THAN THOSE SPECIFIED HEREIN MAY RESULT IN HAZARDOUS RADIATION EXPOSURE.

[Page 6](#) Important safety information (continued) • Ensure that the unit is sufficiently ventilated! Never place • When you leave your home for a long period of time, it next to or underneath curtains! unplug the AC power cord for safety. •...

[Page 7: To Display Your Lcd Tv Using A Wall Bracket](#)

To display your LCD TV using a wall bracket If you decide to wall mount your LCD TV, always use a wall bracket appropriate for the size and weight of the LCD TV: (1) Caution: Two people are required for installation. (2) Unplug and remove any cables and/or other component connectors from the rear of the TV.

[Page 8: The Remote Control](#)

The Remote Control Simple at-a-glance reference of your remote control. Standby / On mode AV / Source To switch your TV to standby mode. To select input from external sources. Subtitle On/Off Freeze Picture To enable the displaying of subtitles. To freeze the picture on the screen.

[Page 9: Connecting External Equipment](#)

Connecting External Equipment Before connecting any external equipment, remove the mains plug from the wall socket. Side View Standby Button +/- Controls P/V-AV Button HDMI Input Sockets SCART COMMON Socket INTERFACE The DVB Common Interface is for a Conditional Access Module (CAM).

[Page 10: Connecting An Hdmi® Or Dvi Device To The Hdmi Input](#)

Connecting an HDMI® or DVI Device to the HDMI Input The HDMI input on your television receives digital audio To Connect a DVI Device and uncompressed digital video from an HDMI source Connect an HDMI-to-DVI adaptor cable (HDMI type A device or uncompressed digital video from a DVI (Digital connector) to the HDMI terminal.

[Page 11: Connecting A Computer](#)

Connecting a Computer Connecting a USB Device To Connect a Computer To Connect a USB Device With either an RGB/PC or an HDMI connection, you can • You can connect a USB device to your TV by using the watch your computer's display on the television. USB input of the TV.

[Page 12: Controlling The Tv](#)

Controlling the TV A wide variety of external equipment can be connected via the sockets located on the side and back of the television. Whilst all the necessary adjustments and controls for the television are made using the remote control, the buttons on the left side of the television may be used for some functions.

[Page 13: Initial Installation](#)

Initial Installation Before switching on the television put your decoder and media recorder to Standby if they are connected and ensure the aerial is connected to your television. To set up the television, use the buttons on the remote control as detailed on page 7. to input the values of frequency, symbol rate and IMPORTANT: Ensure that the aerial or cable is network ID;...

[Page 14: Basic Operations](#)

Basic Operations General Operation Stereo and Bilingual Transmissions Viewing Channel List If stereo or dual language broadcasts are transmitted, the Channel list allows you to quickly find the channel you are word Stereo or Dual will appear on the screen each time searching for.

[Page 15: Input Selection](#)

General Operation, continued Input Selection Electronic Programme Guide • Display the Electronic Programme Guide for digital • Press the button on your remote control repeatedly channels by pressing GUIDE, and the TV guide will for directly changing sources. Or press the button to appear as below.

[Page 16: Features In Menu](#)

Features in Menu Please note that some of the functions might be unavailable in certain input source. Picture Menu MPEG NR: Selects an option from Off, Low, Middle and High. Press MENU button and select PICTURE by using button. Press OK to enter the PICTURE menu. Press RETURN to go back to the previous menu.

[Page 17: Setup Menu](#)

Features in Menu, continued Setup Menu following screen. Press MENU and select SETUP by using the button. Press OK to enter the SETUP menu. Updating Wizard SETUP 1: "V0.08" update to "V0.10" Language German Are you sure to update the firmware? Country Germany Tuner Mode...

[Page 18: Pc Settings](#)

Features in Menu, continued Reset TV: Press OK and input your correct code. If you are Note: The hint of TV's switching off will appear during sure to reset the TV, select OK and press OK to reset all the last minute if power off timer or sleep timer is the TV settings to the default.

[Page 19: Set Up Your Tv](#)

Set Up Your TV Auto Tuning Press OK to start search. When a desired channel is found, you can select Store Current Channel or As new services are broadcast, it will be necessary to retune the television in order to view them. Store as New Channel and press OK to confi...

[Page 20: Use More Of Your Tv](#)

Use More of Your TV Setting Subtitles Parental Control If Subtitles are available for your current programme, Parental control helps you protect children from watching pressing the SUBTITLE button will toggle Subtitles on or unsuitable programmes. With the correct password only, off.

[Page 21: Setting Timer](#)

Use more of your TV, continued Setting Timer - Press to display the index page. You can set date/time, power on timer or power off timer Using HDMI-LINK for the TV. 1. Press MENU and use to select APPLICATIONS, If your HDMI-CEC compliant devices are connected then press OK to continue.

[Page 22: Hdmi-Link Playback Device Control](#)

Access the root menu of a disk or the selected device. Access the setup menu of TOSHIBA DVD player. CONTENTS Access the contents menu. Access the top menu of a disk during playback by TOSHIBA DVD player. NOTE: These functions depend on the devices connected. English - 21 -...

[Page 23: Media Player](#)

5. Follow the instructions at the bottom of the TV to perform relative functions. Toshiba cannot and does not grant such permission. • Depending on the file size and amount in your USB storage device, it may take some time for loading to Watching Videos view.

[Page 24: To Close The Media Player](#)

Media Player, continued This TV allows you to enjoy photo, video or music files stored on a USB device. To Close the Media Player • Press EXIT on the remote control to close the media player. English - 23 -...

[Page 25: Changing Picture Format](#)

Changing Picture Format Depending on the type of broadcast being transmitted, programmes can be viewed in a number of formats. Press the QUICK button and select Picture Size. Press OK to display the option list, including Wide, 4:3, Super Live, 14:9, Subtitle, or Cinema.

[Page 26: Pc Input Typical Display Modes](#)

PC Input Typical Display Modes The display has a maximum resolution of 1360 x 768. The following table is an illustration of some of the typical video display modes. Your TV may not support different resolutions. Supported resolution modes are listed below. If you switch your PC to an unsupported mode, a warning OSD will appear on the screen.

[Page 27: Av And Hdmi Signal Compatibility \(Input Signal Types\)](#)

AV and HDMI Signal Compatibility (Input Signal Types) Source Supported Signals Available PAL 50/60 NTSC 60 (SCART) RGB 50 RGB 60 PAL 50/60 SIDE AV NTSC 60 480i 60Hz 480p 60Hz 576i 50Hz 576p 50Hz 720p 50Hz YPbPr 720p 60Hz 1080i 50Hz 1080i...

[Page 28: Media Player Supported Format](#)

Media Player Supported Format Media File Format Remarks Video Audio (Maximum resolution/Bit rate etc.) Extension MPEG2 MP@HL, MPEG4 SP, MPEG4 ASP, H.264 BP LV4, MPEG1 layer2, H.264 MP LV4, MP3, 1920x1080 / 40M bit/sec, .avi H.264 HP LV4, AC3, Motion JPEG: 320x240 / 30M bit/sec DivX 3.11, MPEG4 AAC-LC DivX 4.x,...

[Page 29: Specifications And Accessories](#)

Specifications and Accessories Broadcast Systems DVB-T DVB-C Video Input PAL, SECAM, NTSC 4.43 Stereo Nicam External Connections 1-SCART 1 Input 21-pin SCART RGB, A/V, S-VIDEO 2-YPbPr Input 3-AV2 (via YPbPr) Input Video + Audio L + R 4-HDMI 1/2 Input HDMI®...

[Page 30: License Information](#)

License Information • DVB is a registered trademark of the DVB Project. • [1] EIA/CEA-861-D compliance covers the transmission of uncompressed digital video with high-bandwidth digital content protection, which is being standardized for reception of high-definition video signals. Because this is an evolving technology, it is possible that some devices may not operate properly with the television. •...

[Page 31](#) All risks associated with the quality or performance of these software components are assumed by the user. TOSHIBA shall not be liable whatsoever for any cost of repair or correction or other incidental expense incurred in connection with a defect found in any of these software components.

[Page 32](#) LGPLv2.1 Most GNU software, including some libraries, is covered by the ordinary GNU General Public License. This license, GNU LESSER GENERAL PUBLIC LICENSE the GNU Lesser General Public License, applies to certain Version 2.1, February 1999 designated libraries, and is quite different from the ordinary Copyright (C) 1991, 1999 Free Software Foundation, Inc.

[Page 33](#) "modification".) "Source code" for a work means the this section to claim rights or contest your rights to work preferred form of the work for making modifications to it. written entirely by you; rather, the intent is to exercise the For a library, complete source code means all the source right to control the distribution of derivative or collective code for all modules it contains, plus any associated...

[Page 34](#) 6. As an exception to the Sections above, you may also and distribute such a combined library, provided that the combine or link a "work that uses the Library" with the separate distribution of the work based on the Library and Library to produce a work containing portions of the of the other library facilities is otherwise permitted, and Library, and distribute that work under terms of your...

[Page 35](#) consistent application of that system; it is up to the author/ INACCURATE OR LOSSES SUSTAINED BY YOU OR donor to decide if he or she is willing to distribute software THIRD PARTIES OR A FAILURE OF THE LIBRARY through any other system and a licensee cannot impose TO OPERATE WITH ANY OTHER SOFTWARE), EVEN that choice.

[Page 36](#) copyright notice(s) and this permission notice appear in all =====
copies of the Software and that both the above copyright The FreeType Project is distributed in
several archive notice(s) and this permission notice appear in supporting packages; some of
them may contain, in addition to the documentation.

[Page 37](#) The FreeType Project is copyright (C) 1996-2000 by Discusses general use and
applications of FreeType, David Turner, Robert Wilhelm, and Werner Lemberg. as well as future
and wanted additions to the library and distribution. All rights reserved except as specifi ed
below. If you are looking for support, start in this list if 1.

[Page 38](#) License Information Cleaning the screen and cabinet... Turn off the power, clean the
screen and cabinet with a soft, dry cloth. We recommend that you do not use any proprietary
polishes or solvents on the screen or cabinet as this may cause damage. Disposal...

[Page 39: Questions And Answers](#)

Questions Answers Below are the answers to some of the most common queries. For more
information, go to www.toshiba.co.uk Why is there no sound or picture? Why don't the controls
of the television work? Check the television is not in standby mode.

[Page 40](#) Questions Answers Below are the answers to some of the most common queries. For
more information, go to www.toshiba.co.uk Why when digital subtitles have been selected are
Why doesn't the Media Browser feature operate? they not showing on screen? Make sure that
USB is connected correctly.

[Page 41](#) 0810-144 122 (7,3 ct/min aus dem Festnetz der Telekom Austria, Mobil ggf.
abweichend)

This manual is also suitable for:

[Digital 23el93 series](#)[Digital series](#)