





## Whirlpool SC8720ED Dimensions And Installation Information

30" gas downdraft cooktop



1

--

•

Bookmarks

--

## Quick Links

[Download this manual](#) See also: [Use and Care Manual](#), [Instruction and Installation Manual](#)

®

#### PRODUCT MODEL NUMBERS

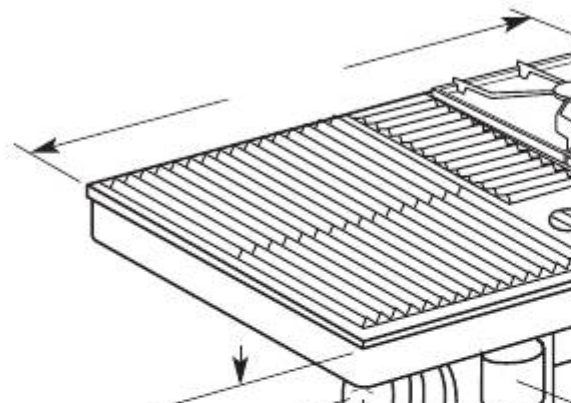
SC8720ED

**Whirlpool**  
CORPORATION

Gas supply: Use 3/4" rigid pipe gas supply line to the range location. A smaller size pipe on long runs may result in insufficient gas supply. With L.P. gas, piping or tubing size can be 1/2"

minimum. If local codes permit, it is recommended that new flexible metal tubing, design-certified by AGA or CSA, 4-5 feet long, 1/2- or 3/4-inch I.D., be used for connecting the range to the rigid gas supply line. A 1/2" male pipe thread is needed for connection to pressure regulator female pipe threads. An individual manual shutoff valve must be located in the same room, but external to the range.

Electrical: A 120-volt, 60-Hz, AC-only, 15- or 20-ampere, fused electrical supply is required. A time-delay fuse or circuit breaker is recommended. It is recommended that a separate circuit serving only



this appliance be provided.

Venting system. Use metal vent only.

Exception: Under a concrete slab, PVC may be used; see Installation Instructions for details. Rigid metal vent is recommended. Do not use plastic or metal foil vent.

This downdraft cooktop is rated at 60 feet (18.3 m) of straight vent or the equivalent.

If vent length is 10 feet (3 m) or less, 5" diameter round vent may be used. If vent length is more than 10 feet (3 m), use 6" diameter round or 3-1/4" x 10" (8.3 x 25.4 cm) rectangular vent.

Venting system must terminate to the outside.

All openings in the wall or floor where cooktop is to be installed must be sealed.

Exhaust Duct

Cutout Locations

28-7/8"

(73.3 cm)

cutout width

15/16" (2.4 cm)

minimum

distance to

backsplash

or vertical

wall

Select required

vent cutout

Countertop must be supported

within 3" (7.6 cm) of cutout.

If cabinet has drawers, drawers will need to be removed and drawer fronts installed on front of cabinet.

Because Whirlpool Corporation policy includes a continuous commitment to improve our products, we reserve the right to change materials and specifications without notice.

## 30" Gas Downdraft Cooktop

### OVERALL DIMENSIONS

### CABINET OPENING DIMENSIONS

0" (0 cm)

Do Not seal cooktop to countertop.

\*\*

Note: 30" (76.2 cm) minimum when bottom of wood or metal cabinet is protected by not less than 1/4" flame retardant millboard covered with not less than No. 28 MSG sheet steel, 0.015" stainless steel, 0.024" aluminum or 0.020" copper.

36" (91.4 cm) minimum clearance between the top of the cooking platform and bottom of unprotected wood or sheet metal.

20-15/16"

(53.2 cm)

cutout depth

1-7/8" (4.8 cm)

minimum space

to front edge of

4" (10.2 cm)

countertop

16" (40.6 cm)

14" (35.6 cm)

29-7/8" (75.9 cm)

width

Blower can be swiveled 90°.

3-5/16"

15-5/8"

(8.4 cm)

(39.7 cm)

burner box

blower

depth

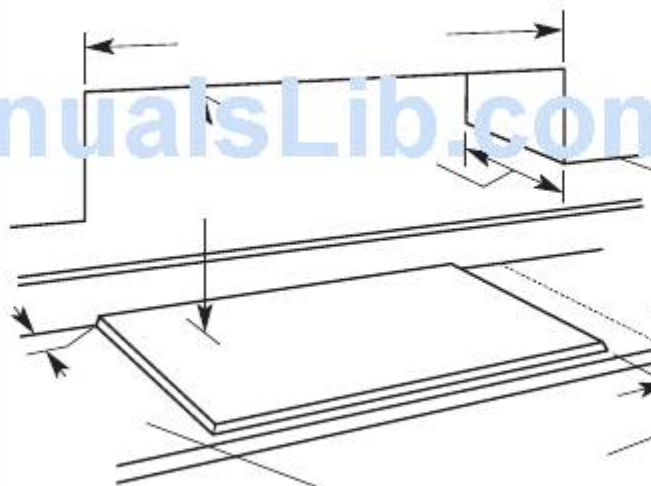
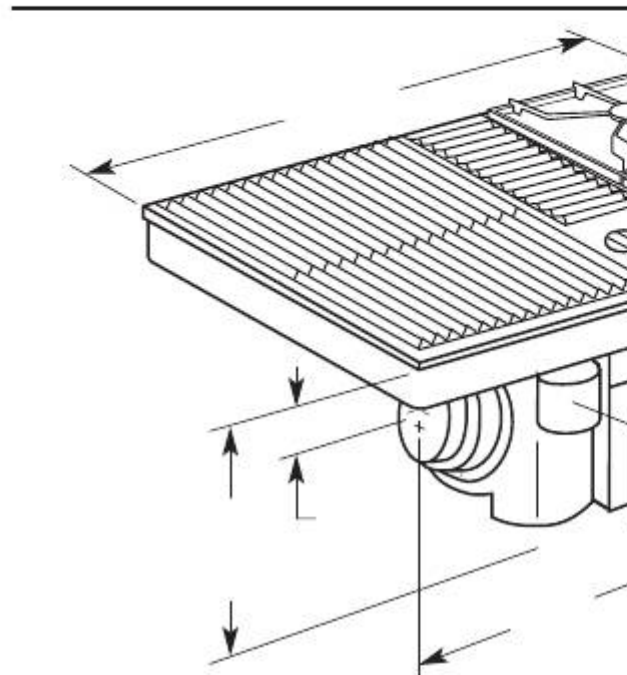
housing

depth

30" (76.2 cm) minimum when higher than 18" (45.7 cm)

13" (33 cm)

maximum upper





See Note\*\*

cabinet depth  
for minimum  
clearances.

Minimum distance to nearest  
combustible vertical surface extending  
18" (45.7 cm) above cooktop

Gas Line Location

11" (27.9 cm)

cabinet bottom

Install gas line within shaded  
area of cabinet.

Dimensions are for planning purposes only. For complete details, see Installation  
Instructions packed with product. Specifications subject to change without notice.

21-1/2" (54.6 cm)

pressure

regulator

wiring box

cover

grease

container

11-7/8"

(30.2 cm)

14"

(35.6 cm)

**Side clearance — 2" (5.1 cm)**

Installation location

minimum clearance is required. 6"

should provide sufficient

room for:

(15.2 cm) clearance between side

• Removing grease

of cooktop and side wall is

containers.

recommended for maximum

• Accessing gas regulator.

ventilation performance.

**Rear clearance — The rear edge**

of the cooktop may be installed

18" (45.7 cm)

flush with countertop backsplash.

minimum clearance

15/16" (2.4 cm) clearance

upper cabinet

between rear edge of appliance

to countertop

and rear wall is recommended.

**Motor/blower clearance —**

2" (5.1 cm) clearance is required

2"

between motor and cabinet for

(5.1 cm)

proper cooling.

6" (15.2 cm) clearance is

recommended for maximum

performance.

2"

(5.1 cm)

min.

motor

blower

clearance

**Minimum base cabinet dimensions —**

30" (76.2 cm) base cabinet

24" (61.0 cm) base cabinet depth

25" (63.5 cm) countertop depth

Electrical Outlet Location

side wall

16" (40.6 cm)

rear

wall

cabinet

bottom

28-7/8" (73.3 cm)

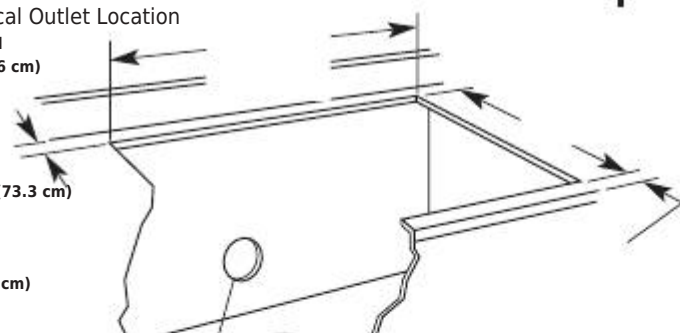
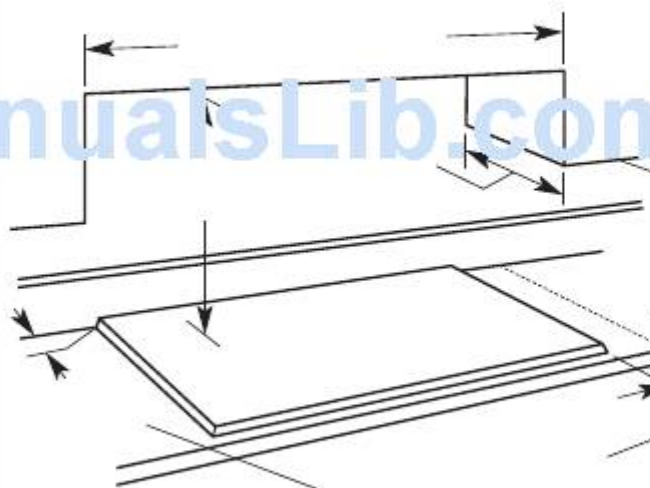
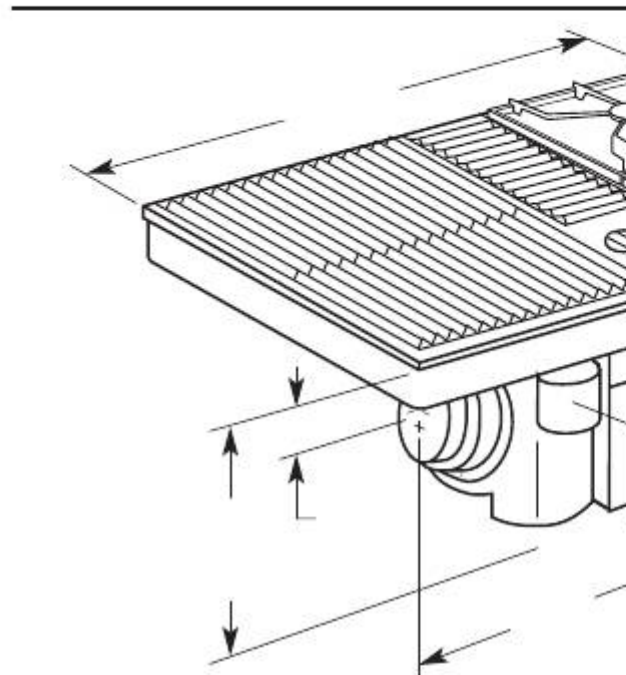
depth

25-7/8"

(65.7 cm)

4" (10.2 cm)

Install



grounded  
electrical  
outlet  
within  
shaded area  
of rear wall.  
11" (27.9 cm)  
Ref. 4381590 rev. A  
08-20-02



I

## Related Manuals for Whirlpool SC8720ED

### [Cooktop WHIRLPOOL SC8720ED Use And Care Manual](#)

30" gas modular downdraft cooktop (34 pages)

### [Cooktop Whirlpool SC8720EDB Use And Care Manual](#)

30" gas modular downdraft cooktop (34 pages)

### [Cooktop Whirlpool SC8720ED Installation Instructions Manual](#)

30" gas downdraft cooktop (9 pages)

### [Cooktop Whirlpool SC8720EDB - GAS DOWNDRAFT Installation Instructions Manual](#)

30" gas downdraft cooktop (9 pages)

### [Cooktop Whirlpool SC6536W Use & Care Manual](#)

Whirlpool gas cooktop use & care guide (12 pages)

### [Cooktop Whirlpool SC8430ER Use & Care Manual](#)

Whirlpool gas cooktop use & care guide sc8430sr, sc8430er (12 pages)

### [Cooktop Whirlpool SC8436ER Use & Care Manual](#)

Whirlpool cooktop sc8536er, sc8436er user guide (12 pages)

### [Cooktop Whirlpool SC8630ED Use And Care Manual](#)

Sealed burner gas cooktop (16 pages)

### [Cooktop Whirlpool SC8636EB Use And Care Manual](#)

Sealed burner gas on glass cooktop (16 pages)

### [Cooktop Whirlpool SC8640ED Installation Instructions](#)

30" gas sealed burner cooktop (5 pages)

### [Cooktop Whirlpool SC8720EDB0 Parts List](#)

30" gas convertible downdraft cooktop (5 pages)

### [Cooktop Whirlpool SC8720EDB0 Installation Instructions Manual](#)

30" gas downdraft cooktop (10 pages)

### [Cooktop Whirlpool SC8900EMH Use & Care Manual](#)

Modular down draft cooktop (16 pages)

### [Cooktop Whirlpool SC8900EX Use & Care Manual](#)

Whirlpool gas cooktop sc8900ex user guide (20 pages)

### [Cooktop Whirlpool SC8720EDB06 Installation Instructions Manual](#)

30" gas downdraft cooktop (9 pages)

## Related Products for Whirlpool SC8720ED

[Whirlpool SC8720EDB0](#)

[Whirlpool SC8720EDB06](#)

[Whirlpool SC8536EX](#)

[Whirlpool SC8100XA](#)

[Whirlpool SC8430SR](#)

[Whirlpool SC8436ER](#)

[Whirlpool SC8536ER](#)

[Whirlpool SC8630EB](#)

[Whirlpool SC8630EW](#)

[Whirlpool SC8630EX](#)

[Whirlpool SC8630ED](#)

[Whirlpool SC8636EB](#)

[Whirlpool SC8640ED](#)

[Whirlpool SC8900EMH](#)

[Whirlpool SC8900EX](#)

[Whirlpool SC8536EW](#)

This manual is also suitable for:

[sc8720edb](#)