



Whirlpool DU851SWP Dimensions

Undercounter dishwasher

1

| |
|--|
| |
|--|

•

Bookmarks

| |
|--|
| |
|--|

[Download this manual](#)

Quick Links

Undercounter Dishwasher

PRODUCT MODEL NUMBERS

DU400SWK

DU915PWS

DU810SWP

DU915PWW

DU811SWP

DU930PWP

DU840SWP

DU930PWS

DU850SWP

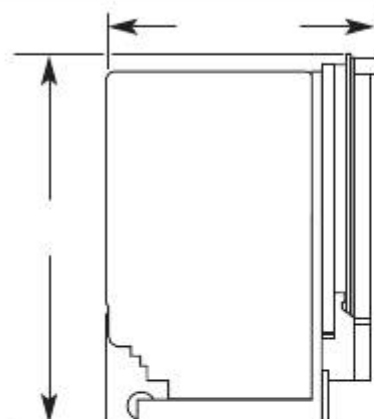
DU945PWP

DU851SWP

DU945PWS

DU895SWP

DU948PWP



DU915PWP

DUL1405P

Whirlpool®
Electrical: 120 volt, 60 Hz, AC-only, 15 or 20 amp. electrical supply. Use copper wire only. A time-delay fuse or circuit breaker and separate circuit is recommended.

Water: A hot water line with 20-120 psi

(138-862 kPa) water pressure. Water temperature must be 120°F (49°C) at dishwasher. Use 3/8" O.D. copper tubing with compression fitting (1/2" minimum plastic tubing is optional but not recommended). Use a 90° elbow with 3/8" N.P.T. external pipe threads on one end to connect to water inlet valve. Do not solder within 6" (15.2 cm) from water inlet valve.

Drain: Use the new drain hose supplied with your dishwasher. If this is not suitable, use a new drain hose with a maximum length of 12 ft (3.7 m) that meets all current AHAM/IAPMO test standards, is resistant to heat and detergent, and fits the drain connector of the dishwasher. Must have a high drain loop 20" (50.8 cm) above the subfloor or floor. Connect drain hose to waste tee or disposer inlet above drain trap in house plumbing and 20" (50.8 cm) minimum above the floor. An air gap must be used if the drain hose is connected to house plumbing lower than 20" (50.8 cm) above subfloor or floor. Use 1/2" minimum I.D. drain line fittings.

Corner location: Requires a 2" (5.1 cm)

minimum clearance between the side of the dishwasher door and wall or cabinet.

A side panel kit is available from your dealer for installing your dishwasher at end of cabinet.

Grommet is required for electrical cable or power supply cord hole cut in a metal cabinet.

Do not install dishwasher over carpeted floor.

CUSTOM FRONT PANEL DIMENSIONS (Framed)

These panels fit only models with frames around the door and access panels.

7/32"

(5.6 mm)

door panel

3/8"

(side view)

(9.5 mm)

18 21/32"

1"

(47.4 cm)

(25.4 mm)

7/32"

(5.6 mm)

Because Whirlpool Corporation policy includes a continuous commitment to improve our products, we reserve the right to change materials and specifications without notice.

OVERALL DIMENSIONS

*

CABINET OPENING DIMENSIONS

(10.2 cm)

door panel (front view)

NOTE: Access panel is wider than door panel.

access panel
(front view)

All edges routed to 7/32" (5.6 mm) thickness.

22 31/32"

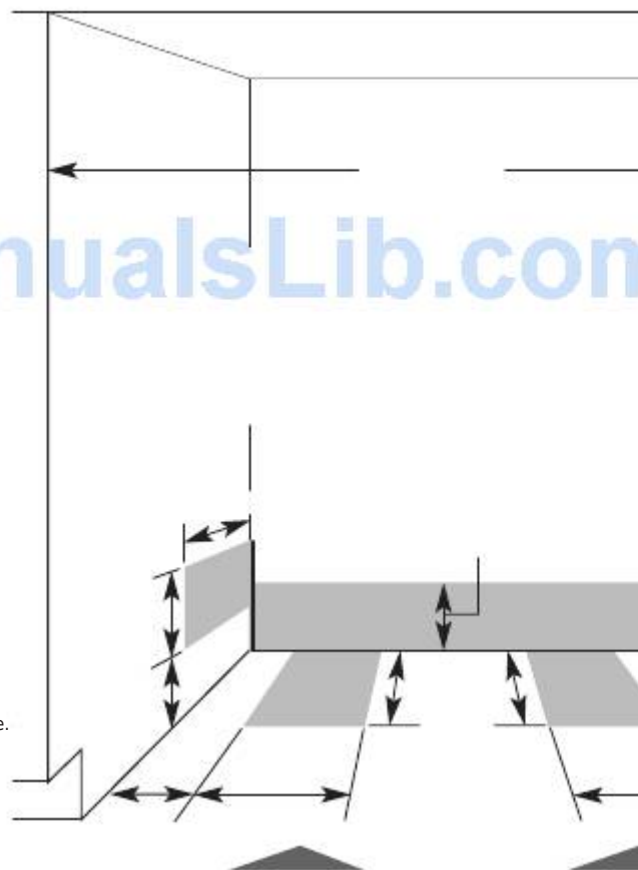
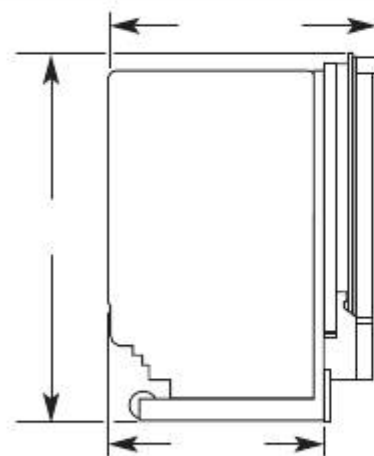
(58.3 cm)

24" (61 cm)

33-7/8"

(86 cm) min.

to front of



door frame

20-3/4"

(52.7 cm)

24" (61 cm)

*Measured from the lowest point on the underside of countertop. May be reduced to 33-7/8" (86 cm) by removing wheels from dishwasher.

**Minimum, measured from narrowest point of opening.

6" (15.2 cm)

4" (10.2 cm)

4"

10"

2-1/2"

(25.4 cm)

(6.4 cm)

5" (12.7 cm)

2"

(5.1 cm)

Water line entering through the left side of opening in shaded areas makes connection easier.

Minimum 1/2" (12.7 mm) hole.

23 5/16" (59.2 cm)

Dimensions are for planning purposes only. For complete details, see Installation Instructions packed with product. Specifications subject to change without notice.

*

23-7/8" (60.6 cm)

**

24" (61 cm)

6" (15.2 cm)

4"

(10.2 cm)

2-1/2"

(6.4 cm)

2"

5" (12.7 cm)

(5.1 cm)

Drain hose and power supply line entering through the right side of opening in shaded areas makes connection easier.

Drain hose size: 1-1/2" (3.8 cm)

Power supply line hole-direct wired: 3/4" (1.9 cm)

Power supply line hole-with plug: 1-1/2" (3.8 cm)

Cut door panel to clear access panel when door is in open position

side view

door opened

7/32" (5.6 mm) thick

top view

access panel frame

*

34" (86.4 cm) min.

.

door closed

door pivot

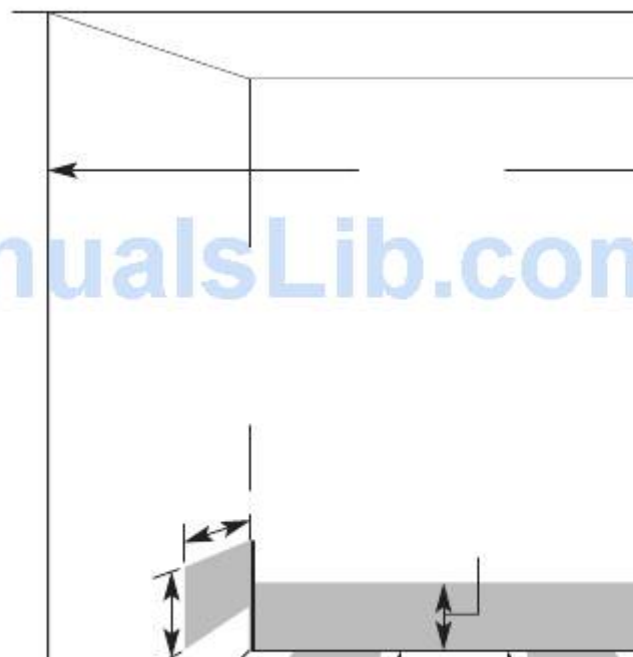
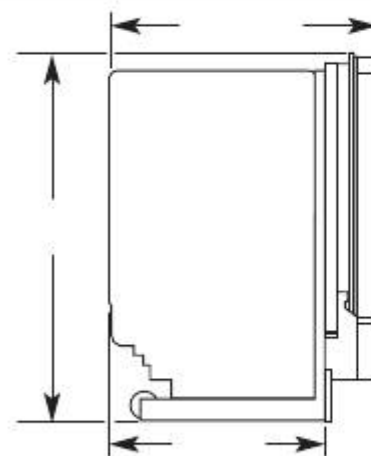
access panel

1/4"

(6.4 mm) min.

Ref. 8535436

09-17-09



Related Manuals for Whirlpool DU851SWP

[Dishwasher Whirlpool DU400SWK Dimensions](#)

Undercounter dishwasher (1 page)

[Dishwasher Whirlpool DU930PWSS - 24 Inch Full Console Dishwasher Dimensions](#)

Undercounter dishwasher (1 page)

[Dishwasher Whirlpool 810 Series Use And Care Manual](#)

Whirlpool dishwasher use & care guide (40 pages)

[Dishwasher Whirlpool DU810SWPT User Instructions](#)

Built-in dishwasher use & care guide (13 pages)

[Dishwasher Whirlpool DU810SWP Features & Specifications](#)

(2 pages)

[Dishwasher Whirlpool DU810SWPU Energy Manual](#)

Energy guide (2 pages)

[Dishwasher Whirlpool GU3600XTSY Manual](#)

(2 pages)

[Dishwasher Whirlpool DP840 Use And Care Manual](#)

Whirlpool dishwasher user manual (40 pages)

[Dishwasher Whirlpool DU810 Use & Care Manual](#)

(19 pages)

[Dishwasher Whirlpool DU8500XX-1 Parts List](#)

Whirlpool undercounter dishwasher parts list (13 pages)

[Dishwasher Whirlpool DU850SWPB1 Parts List](#)

Undercounter dishwasher (8 pages)

[Dishwasher Whirlpool DU850SWPB3 Parts List](#)

Undercounter dishwasher (8 pages)

[Dishwasher WHIRLPOOL DU850SWPB4 User Instructions](#)

(12 pages)

[Dishwasher Whirlpool DU850SWLQ0 Use & Care Manual](#)

(36 pages)

[Dishwasher Whirlpool DU805DWGB1 Use & Care Manual](#)

Undercounter dishwasher (40 pages)

[Dishwasher Whirlpool DU800DWG Manual](#)

1998 dishwashers (67 pages)

Related Products for Whirlpool DU851SWP

[Whirlpool DU8100 Series](#)

[Whirlpool DU8100XT](#)

[Whirlpool DU810](#)

[WHIRLPOOL DU810SWPQ4](#)

[WHIRLPOOL DU810SWPU4](#)

[WHIRLPOOL DU810SWPT4](#)

[Whirlpool DU810DWGQ1](#)

[Whirlpool DU810DWGU0](#)

[Whirlpool DU810DWGQ0](#)

[Whirlpool DU810DWGQ2](#)

[Whirlpool DU810DWG](#)

[Whirlpool DU8116XT](#)

[Whirlpool DU811](#)

[WHIRLPOOL DU811SWPQ4](#)

[Whirlpool DU810OXX](#)

[WHIRLPOOL DU811SWPU4](#)

This manual is also suitable for:

Du915pwpDu915pwsDu915pwwDu930pwpDu930pwsDu945pwp ... [Show all](#)