

Backing Up Your Files - Toshiba P30-S6362ST User Manual

P30-s6362st user's guide

1
2
3
4
5
6
7
8
9
10
11
12
13
14
15
16
17
18

19
20
21
22
23
24
25
26
27

Table Of Contents

28
29
30
31
32
33
34
35
36
37
38
39
40
41
42
43
44
45
46
47
48
49
50
51
52
53
54
55
56
57
58
59
60
61
62
63
64
65
66
67

68
69
70
71
72
73
74
75
76
77
78
79
80
81
82
83
84
85
86
87
88
89
90
91
92
93
94
95
96
97
98
99
100
101
102
103
104
105
106
107
108
109
110
111
112
113
114
115
116
117

118
119
120
121
122
123
124
125
126
127
128
129
130
131
132
133
134
135
136
137
138
139
140
141
142
143
144
145
146
147
148
149
150
151
152
153
154
155
156
157
158
159
160
161
162
163
164
165
166
167

168
169
170
171
172
173
174
175
176
177
178
179
180
181
182
183
184
185
186
187
188
189
190
191
192
193
194
195
196
197
198
199
200
201
202
203
204
205
206
207
208
209
210
211
212
213
214
215
216
217

218
219
220
221
222
223
224
225
226
227
228
229
230



•

•

Bookmarks



86

Learning the Basics

Backing up your files

To print a file:

1

If your printer is not on, turn it on now.

2

Open the File menu of your Windows
Print.

The program displays a Print dialog box.

Sample Print dialog box

3

Specify the print parameters. For example, the range of pages and number of copies to print.

4

Click Print.

Backing up your files

Backing up your files means copying individual files to media, such as CDs, or copying entire sections of your hard

disk to another device, such as a tape drive.

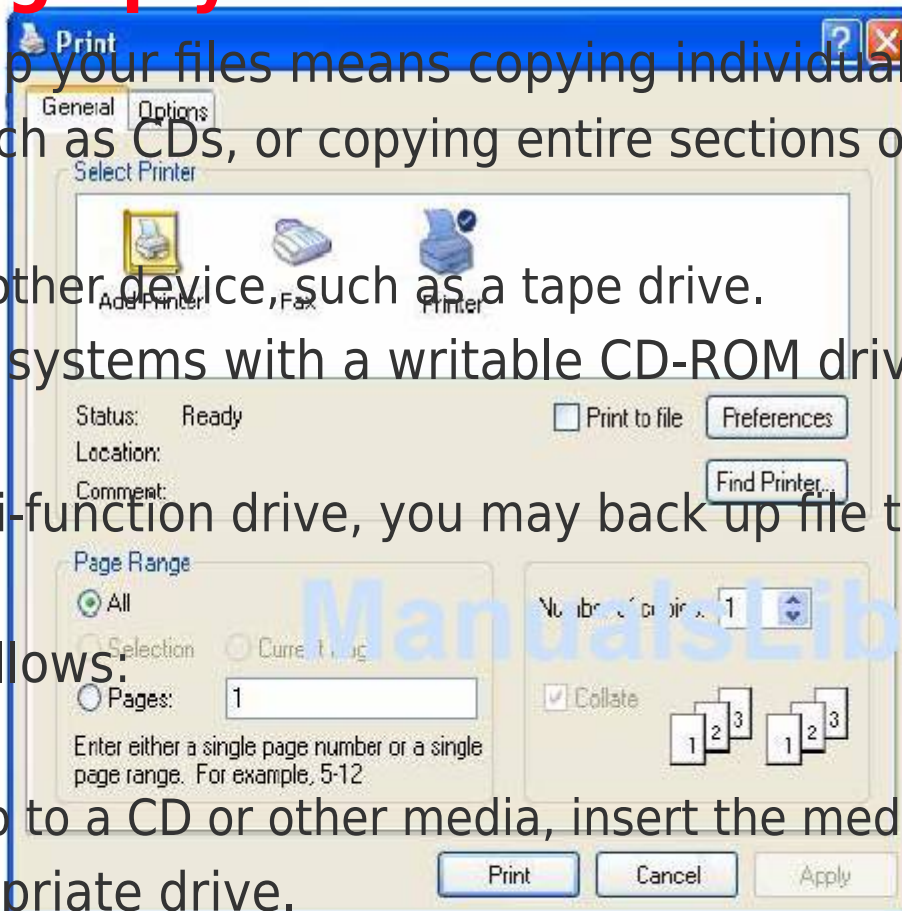
For those systems with a writable CD-ROM drive or DVD-

ROM multi-function drive, you may back up file to a writable

disc as follows:

1

To back up to a CD or other media, insert the media into the appropriate drive.



®

program and click

[Previous Page](#)
[Next Page](#)

1
...
83
84
85
86
87
88
89
90

Related Manuals for Toshiba P30-S6362ST

[Laptop Toshiba Satellite P30 Maintenance Manual](#)

Toshiba personal computer (208 pages)

[Laptop Toshiba Satellite P30 User Manual](#)

(170 pages)

[Laptop Toshiba Satellite P30-132 User Manual](#)

Toshiba satellite p30-132: user guide (165 pages)

[Laptop Toshiba Satellite P35-S605 Specification Sheet](#)

Satellite p35 series (12 pages)

[Laptop Toshiba Satellite P35-S609 Specifications](#)

Satellite p35 series (12 pages)

[Laptop Toshiba Satellite P35-S6053 Specifications](#)

Toshiba satellite p35-s6053: specifications (10 pages)

[Laptop Toshiba Satellite P35-S611 Specifications](#)

Satellite p35 series (9 pages)

[Laptop Toshiba Satellite P35-S6112 Specifications](#)

Satellite p35 series (9 pages)

[Laptop Toshiba Satellite P30-S701TD Specifications](#)

Satellite p30 series (4 pages)

[Laptop Toshiba P300-ST3014 User Manual](#)

P300-st3014 user's guide (231 pages)

[Laptop Toshiba Satellite P300-0E2028 Resource Manual](#)

Toshiba satellite p300-0e2028: reference guide (52 pages)

[Laptop Toshiba SATELLITE P300 User Manual](#)

Portable personal computer (208 pages)

[Laptop Toshiba Satellite A305-S6839 User Manual](#)

Portable personal computer (226 pages)

[Laptop Toshiba P300 User Manual](#)

Notebook computer (199 pages)

[Laptop Toshiba PSPCDC-03H00C User Manual](#)

User manual (185 pages)

[Laptop Toshiba dynabook P53 Series User Manual](#)

(129 pages)

Related Content for Toshiba P30-S6362ST

[8100 Backing Up Your Files](#)

Toshiba 8100

[S100-S1133 Backing Up Your Files](#)

Toshiba S100-S1133

[R200-S2032 Backing Up Your Files](#)

Toshiba R200-S2032

[R100 Backing Up Your Files](#)

Toshiba R100

[P25-S609 Backing Up Your Files](#)

Toshiba P25-S609

[P25-S670 Backing Up Your Files](#)

Toshiba P25-S670

[P25-S607 Backing Up Your Files](#)

Toshiba P25-S607

[P25-S526 Backing Up Your Files](#)

Toshiba P25-S526

This manual is also suitable for:

[P30-s6363stP30-s701tdP35-s605P35-s6051P35-s6052P35-s6053](#) ... [Show all](#)