

Backing Up Your Work - Toshiba S300-EZ1511 User Manual

S300-ez1511 user's guide

1
2
3
4
5
6
7
8
9
10
11
12
13
14
15
16
17
18

19
20
21
22
23
24
25
26
27
28
Table Of Contents
29
30
31
32
33
34
35
36
37
38
39
40
41
42
43
44
45
46
47
48
49
50
51
52
53
54
55
56
57
58
59
60
61
62
63
64
65
66
67

68
69
70
71
72
73
74
75
76
77
78
79
80
81
82
83
84
85
86
87
88
89
90
91
92
93
94
95
96
97
98
99
100
101
102
103
104
105
106
107
108
109
110
111
112
113
114
115
116
117

118
119
120
121
122
123
124
125
126
127
128
129
130
131
132
133
134
135
136
137
138
139
140
141
142
143
144
145
146
147
148
149
150
151
152
153
154
155
156
157
158
159
160
161
162
163
164
165
166
167

168
169
170
171
172
173
174
175
176
177
178
179
180
181
182
183
184
185
186
187
188
189
190
191
192
193
194
195
196
197
198
199
200
201
202
203
204
205
206
207
208
209
210
211
212
213
214
215
216
217

218
219
220
221
222
223
224
225
226
227
228
229
230
231
232
233
234
235
236
237
238
239
240
241
242
243
244
245
246
247
248
249
250
251



•

[Table of Contents](#)

•

Bookmarks



2

In your Windows

The program displays a Print dialog box.

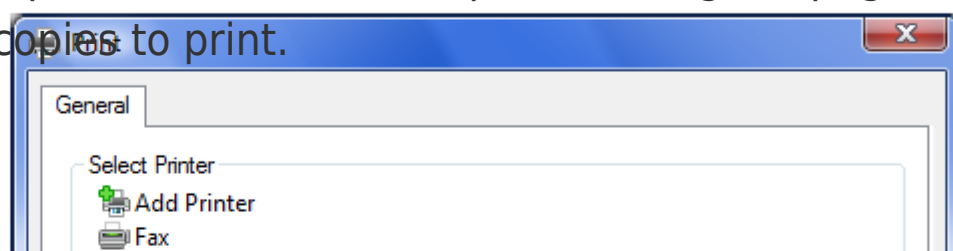
(Sample Image) Print dialog box

3

Specify the print parameters. For example, the range of pages and number of copies to print.

4

Click Print.



Backing up your work

Back up all the files you create in case something happens to your computer. You can back up your files to different types of media such as CDs, DVDs, diskettes, or to a network, if available.

To back up several files at one time, use the Microsoft backup program preinstalled on the computer's internal storage drive. Also see

the Windows

Small files can be backed up on diskettes if an optional external diskette drive is available.

®

-based application, click File, and then Print.

"Backing up your data or your entire computer with

®

operating system" on page

HINT: Backing up all the files on your internal storage drive may take a considerable amount of time and multiple CDs/DVDs. You may prefer to use a high-capacity backup system, such as an external hard drive.

Learning the Basics

Backing up your work

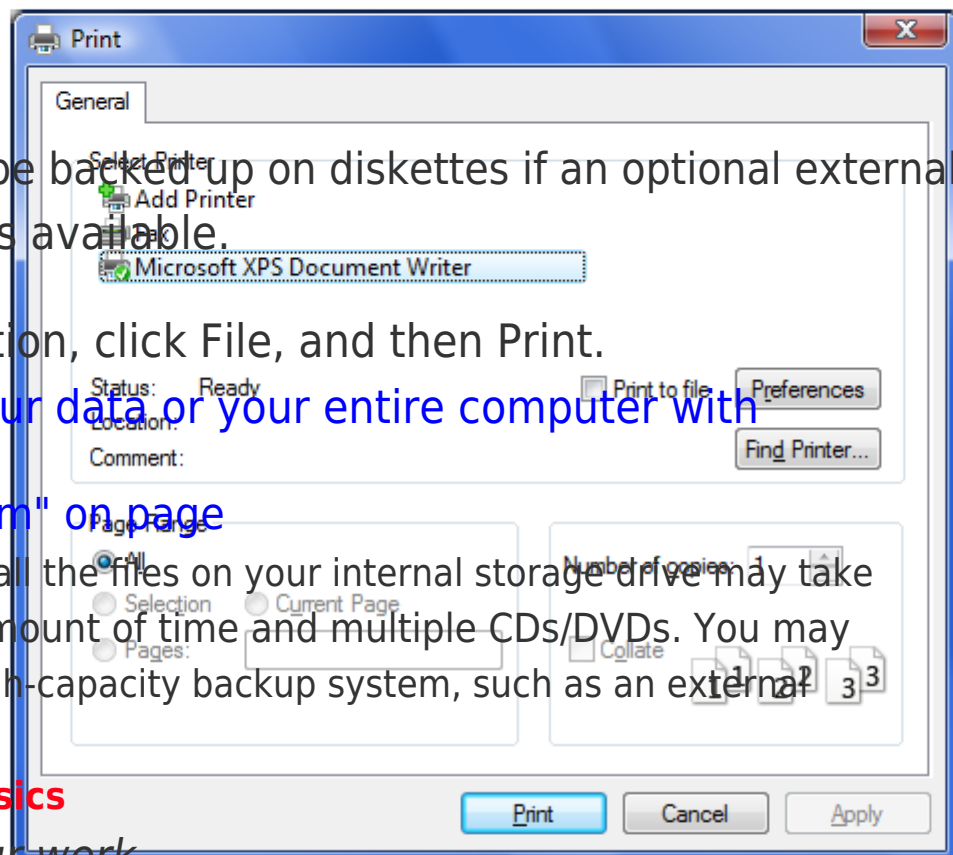
202.

99

®

®

Windows



ManualsLib.com

[Table of Contents](#)

[Previous Page](#)
[Next Page](#)

1
...
96
97
98
99
100
101
102
103

Quick Links:

[If Problems Arise](#)

[Adding Memory \(Optional\)](#)

[Power and the Batteries](#)

Related Manuals for Toshiba S300-EZ1511

[Laptop Toshiba S300 EZ1514 - Satellite Pro - Core 2 Duo 2.1 GHz User Manual](#)

Toshiba user's guide for satellite s300/s300m (windows vista) (242 pages)

[Laptop Toshiba TECRA A10/S10/M10/SATELLITEPRO S300 TECRA S10 User Manual](#)

Vizio mouse user manual (240 pages)

[Laptop Toshiba SATELLITEPRO S300 User Manual](#)

Toshiba laptop user manual (56 pages)

[Laptop Toshiba Satellite Pro S300 Maintenance Manual](#)

(464 pages)

[Laptop Toshiba PTMB3U-00X00X User Manual](#)

User manual (242 pages)

[Laptop Toshiba TECRA A10 Satellite Pro S300 Series User Manual](#)

(242 pages)

[Laptop Toshiba Satellite Pro S300L-SP5919C Manual Del Usuario](#)

User's guide for satellite pro s300l (spanish) (español) (240 pages)

[Laptop Toshiba Satellite Pro S300L Series User Manual](#)

(209 pages)

[Laptop Toshiba Satellite Pro S300-EZ1512 Specifications](#)

Toshiba satellite pro s300-ez1512: specifications (5 pages)

[Laptop Toshiba Satellite Pro S300-EZ1513 Specifications](#)

Toshiba satellite pro s300-ez1513: specifications (5 pages)

[Laptop Toshiba Satellite Pro S300-EZ1514 Specifications](#)

Toshiba satellite pro s300-ez1514: specifications (5 pages)

[Laptop Toshiba Satellite Pro S300-EZ2501 Specifications](#)

Toshiba satellite pro s300-ez2501: specifications (5 pages)

[Laptop Toshiba Satellite Pro S300-S2503 Specifications](#)

Toshiba satellite pro s300-s2503: specifications (5 pages)

[Laptop Toshiba Satellite Pro S300-S2504 Specifications](#)

Toshiba satellite pro s300-s2504: specifications (5 pages)

[Laptop Toshiba Satellite Pro S300M-EZ2402 Specifications](#)

Toshiba satellite pro s300m-ez2402: specifications (5 pages)

[Laptop Toshiba Satellite Pro S300M-S2403 Specifications](#)

Toshiba satellite pro s300m-s2403: specifications (5 pages)

Related Content for Toshiba S300-EZ1511

[satellite fusion 15 series Backing Up Your Work](#)

Toshiba satellite fusion 15 series

[Satellite CL10 Series Backing Up Your Work](#)

Toshiba Satellite CL10 Series

[Portege Z20-B Series Backing Up Your Work](#)

Toshiba Portege Z20-B Series

[Satellite S70-B Series Backing Up Your Work](#)

Toshiba Satellite S70-B Series

[Satellite Click 2 PRO Backing Up Your Work](#)

Toshiba Satellite Click 2 PRO

[Satellite CL40 Series Backing Up Your Work](#)

Toshiba Satellite CL40 Series

[Satellite E40-A Backing Up Your Work](#)

Toshiba Satellite E40-A

[Portege 2010 Backing Up Your Work](#)

Toshiba Portege 2010

This manual is also suitable for:

[S300-ez1512S300-ez1513S300-ez2511S300-ez1514S300-s2503S300-ez2502](#) ... [Show all](#)