

Defrosting Control, Outdoor Heat Exchanger Coil (Heating) - Sanyo SPW-XR253GH56 Technical Data & Service Manual

1

2

Table Of Contents

3

4

5

6

7

8

9

10

11

12

13

14

15

16

17

18
19
20
21
22
23
24
25
26
27
28
29
30
31
32
33
34
35
36
37
38
39
40
41
42
43
44
45
46
47
48
49
50
51
52
53
54
55
56
57
58
59
60
61
62
63
64
65
66
67

68
69
70
71
72
73
74
75
76
77
78
79
80
81
82
83
84
85
86
87
88
89
90
91
92
93
94
95
96
97
98
99
100
101
102
103
104
105
106
107
108
109
110
111
112
113
114
115
116
117

118
119
120
121
122
123
124
125
126
127
128
129
130
131
132
133
134
135
136
137
138
139
140
141
142
143
144
145
146
147
148
149
150
151
152
153
154
155
156
157
158
159
160
161
162
163
164
165
166
167

168
169
170
171
172
173
174
175
176
177
178
179
180
181
182
183
184
185
186
187
188
189
190
191
192
193
194
195
196
197
198
199
200
201
202
203
204
205
206
207
208
209
210
211
212
213
214
215
216
217

218
219
220
221
222
223



•

[Table of Contents](#)

-

Troubleshooting

•

Bookmarks



2-10

Defrosting Control, Outdoor Heat Exchanger Coil (Heating)

When the outdoor temperature is low, frost may form on the outdoor heat exchanger coil.

When this occurred, the defrosting system operates. The microprocessor in the outdoor unit monitors the relationship between the temperature of the outdoor heat exchanger coil

and the outdoor temperature so it can defrost when necessary.

Flow of Defrosting

Heating operation

No counting time for detecting

frost : 15 minutes

Detecting the frost

Stand by time for defros:

25 minutes
Defrosting

1

Release of defrosting

Time Chart for Defrosting

COMPRESSOR
SOLENOID COIL
(4 WAY VALVE)

OUTDOOR FAN
(H or M)
INDOOR FAN
(SET SPEED)

"STANDBY"
INDICATOR

During the defrost cycle, STANDBY appears on the remote controller.

*.....Cold Draft Prevention may operate occasionally
Refer to time chart.

*Minimum continuous operating time by defrosting is 48 minutes (= 15 + 8 + 25).

Occurs either when the temperature of C1 (the outdoor heat exchanger coil) has reached 10°C or above, or when the maximum defrosting time (9 minutes) has elapsed.

1 MINUTE

MAX. 9 MINUTES

ON

ON

ON

OFF OR LL

"STANDBY" APPEARS

Defrosting

Start

II - 12

2. Processes and functions

OUTDOOR COIL
TEMP.

C1 (°C)

"RELEASE OF
DEFROSTING"
RANGE

10

OUTDOOR AIR TEMP.

13.7

10

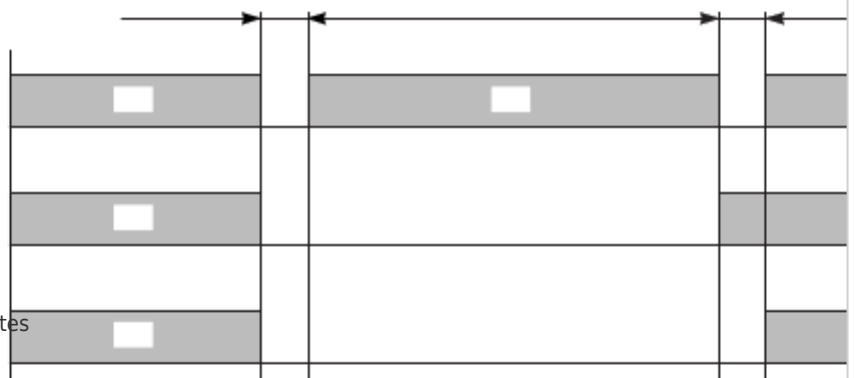
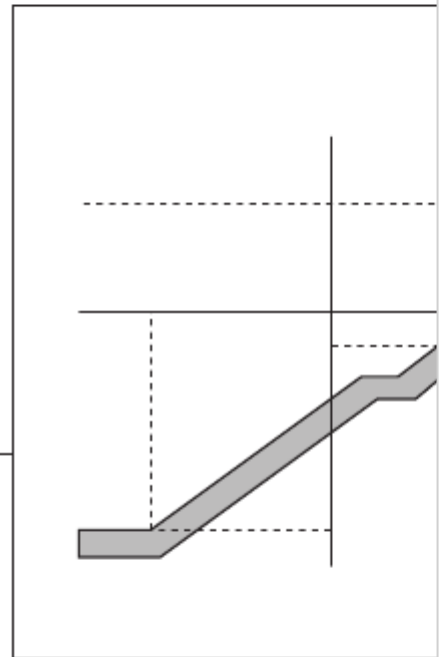
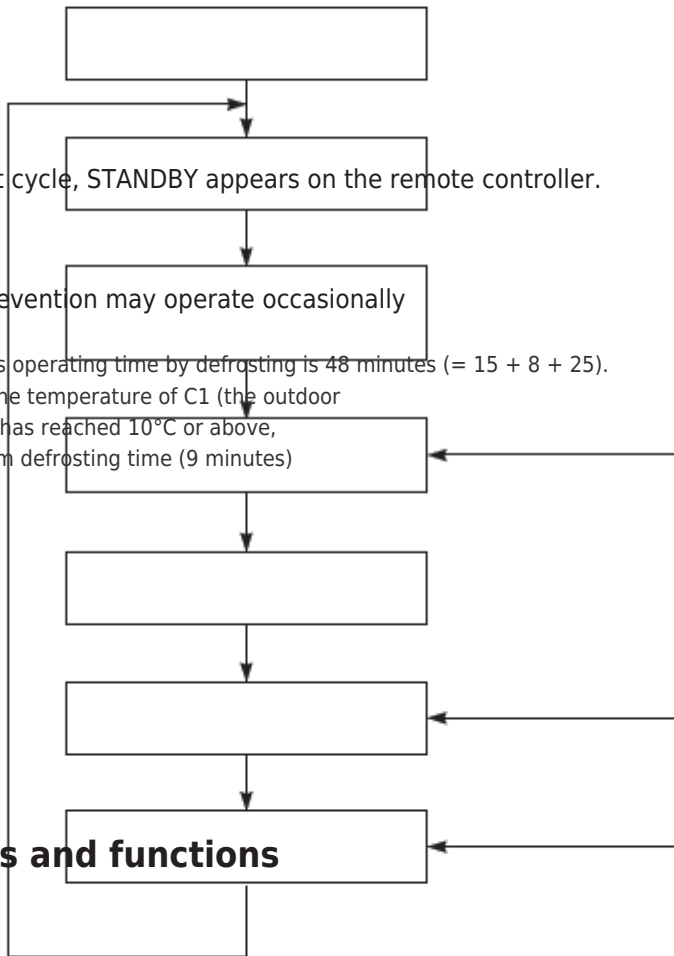
-3

-8

The area below the heavy line is the frost detection area.

-20

Either continuous 8 minutes or cumulative 60 minutes are required to detect frost in the "Frosting" range.



1 MINUTE
ON
ON
OFF
OR LL

Release of
Defrosting
(°C)
X
0441_M_S

Fig. 13

ON
ON

1575_M_S

Fig. 14

SM830080

[Table of Contents](#)

[Previous Page](#)
[Next Page](#)

[1](#)
[...](#)
[138](#)
[139](#)
[140](#)
[141](#)

Quick Links:

[Specifications](#)

[Unit Specifications](#)

[\(A\) Indoor Units](#)

[\(B\) Outdoor Units](#)

Troubleshooting

[Troubleshooting](#) 168

[General Troubleshooting Flow Chart: Diagnosis and Remedy](#) 171

Related Manuals for Sanyo SPW-XR253GH56

[Air Conditioner Sanyo SPW-X253GH56 Service Manual](#)

Split system (105 pages)

[Air Conditioner Sanyo SPW-X483GH56 Installation Instruction](#)

Eco multi system air conditioner (91 pages)

[Air Conditioner Sanyo SPW-C256VH Technical Data & Service Manual](#)

4-way air discharge semi-concealed wall-mounted ceiling-mounted concealed-duct (517 pages)

[Air Conditioner Sanyo Big PACi 18 Series Technical Data & Service Manual](#)

Big pack i dc inverter (275 pages)

[Air Conditioner Sanyo SPW-X253G56 Service Manual](#)

Split system (72 pages)

[Air Conditioner Sanyo 2-WAY ECO-i SPW-C0705DXHN8 Service Manual](#)

Multi system (143 pages)

[Air Conditioner Sanyo SPW-XR254EH56 Installation And Operation Manual](#)

Dc inverter air conditioner (40 pages)

[Air Conditioner Sanyo Mini ECO-i SPW-ASR74GXH56\(A/B\) Installation Instructions Manual](#)

System air conditioner (49 pages)

[Air Conditioner Sanyo SPW-UMR74EXH56 Technical Data & Service Manual](#)

Split system air conditioner (38 pages)

[Air Conditioner Sanyo ECO G SGP-EGW190M2G2W Brochure & Specs](#)

Gas driven vrf m series (9 pages)

[Air Conditioner Sanyo SPW-C1155DXHN8 Technical Data & Service Manual](#)

2-way eco-i multi system (242 pages)

[Air Conditioner Sanyo MINI ECO-i SPW-CR365GXH56B Service Manual](#)

(252 pages)

[Air Conditioner Sanyo SPW-FTR124EH56 Installation And Operation Manual](#)

Dc inverter air conditioner for refrigerant r410a (32 pages)

[Air Conditioner Sanyo SPW-CR365GXH56 Technical Data Manual](#)

Mini eco-i system (346 pages)

[Air Conditioner Sanyo SPW-C0705DZH8 Technical Data Manual](#)

3-way eco-i multi system 5 series (703 pages)

[Air Conditioner Sanyo SPW-CR1503GDYH8 Technical Data & Service Manual](#)

W-eco multi system series (377 pages)

Related Content for Sanyo SPW-XR253GH56

[SAP-K181AA Outdoor Fan Speed Control](#)

Sanyo SAP-K181AA

[CHDZ07263 Automatic Control For Heating And Cooling](#)

Sanyo CHDZ07263

[SAP-K181GJH Outdoor Fan Speed Control](#)

Sanyo SAP-K181GJH

[SAP-K71GJA-S Outdoor Fan Speed Control](#)

Sanyo SAP-K71GJA-S

[SAP-K71GJHA Outdoor Fan Speed Control](#)

Sanyo SAP-K71GJHA

[KHS3632 / CH3632 Defrosting Control, Outdoor Heat Exchanger Coil](#)

Sanyo KHS3632 / CH3632

[SPW-C0705DZH8 Total Heat Exchanger With Dx Coil \(Gu Type\)](#)

Sanyo SPW-C0705DZH8

[CM1812 / KMS0912 \(x2\) Indoor \(Heat Exchanger\) Coil Temperature Sensor \(Th1\) Is Defective](#)

Sanyo CM1812 / KMS0912 (x2)

This manual is also suitable for:

[Spw-xr363gh56Spw-xr483gh56Spw-tr253gh56Spw-tr363gh56Spw-tr483gh56Spw-ur253ghn56](#) ... [Show all](#)