

Ups Protection System; System Protection Features; System Protection Functions - Toshiba UNINTERRUPTIBLE POWER SYSTEM 1600XP Installation And Operation Manual

Single phase - 3.6/6/8/10/14/18/22 kva

1
2
3
4
5
6
Table Of Contents
7
8
9
10
11
12
13
14
15
16
17

18
19
20
21
22
23
24
25
26
27
28
29
30
31
32
33
34
35
36
37
38
39
40
41
42
43
44
45
46
47
48
49
50
51
52
53
54
55
56
57
58
59
60
61
62
63
64
65
66
67

68
69
70
71
72
73
74
75
76
77
78
79
80
81
82
83
84
85
86
87
88
89
90

•

[Table of Contents](#)

•

Bookmarks



UPS Protection System

TOSHIBA System Protection Features Leading Innovation >>>

the following schematic shows the electrical locations of the protection devices on the UpS.

MCCB
Input
Power
Surge
Absorber
Abnormal

System Protection Functions

the following charts show the built-in system fault protection functions on all the UpS models.

Protection Item

bypass ol: inverter, chopper
See Audible Alarm Functions on
inverter ol: Fault lamp off
bypass ol: Fault lamp on
inverter ol: bypass relay closed



bypass ol: bypass relay open
inverter ol: yes if bypass is ok

Current limit

overload

Isolation
Transformer
Output
Power
Power Flow

Output Overload

OVERLOAD

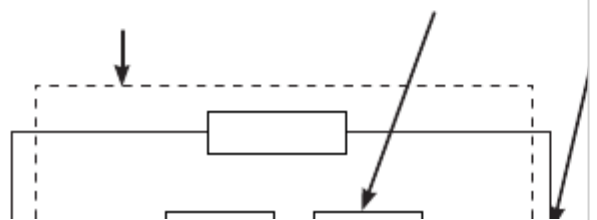
stopped

page 31

Fault relay open;

bypass ol: no

67



[Table of Contents](#)

[Previous Page](#)
[Next Page](#)

1
...
72
73
74
75
76
77
78
79

Related Manuals for Toshiba UNINTERRUPTIBLE POWER SYSTEM 1600XP

[UPS Toshiba 1600XP Specifications](#)

Single phase uninterruptible power systems (9 pages)

[UPS Toshiba 1600XP SERIES Installation And Operation Manual](#)

(140 pages)

[UPS Toshiba 1600XP SERIES Installation And Operation Manual](#)

1600xp series single phase - 3.6/6/8/10/14/18/22 kva (100 pages)

[UPS Toshiba 1600XPi Series Installation And Operation Manual](#)

8-22kva battery cabinet (23 pages)

[UPS Toshiba 1600XP SERIES Installation And Operation Manual](#)

8-22kva battery cabinet (22 pages)

[UPS Toshiba 1600XP Series Quick Installation Manual](#)

(4 pages)

[UPS Toshiba 1600EP SERIES Instruction Manual](#)

(58 pages)

[UPS Toshiba 1600EP Series Operation Manual](#)

Battery cabinet system single phase- 8/10/14/18 kva (16 pages)

[UPS Toshiba 1600EP Series Operation Manual](#)

Battery cabinet system single phase - 3.6/6.0 kva (22 pages)

[UPS Toshiba 1600 Series Product Specifications](#)

3.6kva 208/240v in - 208/240/120v out tower hardwire solution (3 pages)

[UPS Toshiba 1600 Series Product Specifications](#)

Uninterruptible power systems, 3.6kva 240v in - 240v out tower maintenance bypass solution (2 pages)

[UPS Toshiba 1600EP Series Quick Installation Manual](#)

(4 pages)

[UPS Toshiba 1600 Series Instruction Manual](#)

Single phase - 2.4/3.6/6/8 kva plus (49 pages)

[UPS Toshiba 1600XPi Series Installation And Operation Manual](#)

Single phase - 3.6/5.2/6/8/10/14/18/22 kva (140 pages)

[UPS Toshiba 1500 Plus Series Operation Manual](#)

6/.8/1.0 kva 220v uninterruptible power system (31 pages)

[UPS Toshiba UT1A1A010C6 User Manual](#)

User guide (51 pages)

Related Content for Toshiba UNINTERRUPTIBLE POWER SYSTEM 1600XP

[4200FA 11 Ups Protection System](#)

Toshiba 4200FA

[4200FA XT Ups Protection System](#)

Toshiba 4200FA XT

[1600XP SERIES Ups Protection System](#)

Toshiba 1600XP SERIES

[4200FA Ups Protection System](#)

Toshiba 4200FA

[4200FA Ups Protection System](#)

Toshiba 4200FA

[4200FA CT/XT Ups Protection System](#)

Toshiba 4200FA CT/XT

[G9400 Series Normal Operation: Load Power Supplied By Each System](#)

[Ups Inverter](#)

Toshiba G9400 Series

[1500 Series System Protection Features](#)

Toshiba 1500 Series

This manual is also suitable for:

[1600xp serie1600xp series](#)