

Outdoor Unit - Sanyo C2432A Installation Instructions Manual

1
2
3
4
5
6
7
8
9
10
11
12
13
14
15
16
17
18

19
20
21
22
23
24
25
26
27
28
29
30
31
32
33
34
35
36
37
38
39
40
41
42
43
44
45
46
47
48
49
50

•

[Table of Contents](#)

•

Bookmarks



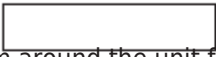
Outdoor Unit

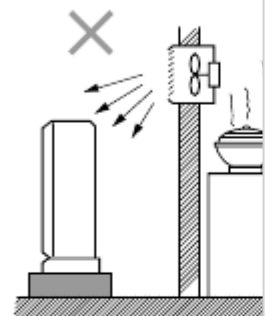
AVOID:



heat sources, exhaust fans, etc. (Fig. 2-1)
damp, humid or uneven locations.

DO:

choose a place as cool as possible.
choose a place that is well ventilated and outside
air temperature does not exceed maximum 115°F
constantly. 
allow enough room around the unit for air intake/
exhaust and possible maintenance. (Fig. 2-2)
provide a solid base; about 6 inch above ground
level to reduce humidity and possible water dam-
age in the unit and decreased service life. (Fig. 2-3)
use lug bolts or equivalent to bolt down unit, reduc-
ing vibration and noise.



In case of multiple installations

Unit spacing if air discharge chamber is not used.

Min. 4 ft.

If you would like to make the separation smaller on the air discharge side, use an air discharge chamber.

You can install any number of units side-by-side.

Min. _____

1 inch

Unit spacing when air discharge chamber is used.

Min. 5 ft.

Min. 4 ft.

Min. 4 ft.

Min. 1 ft. 2 inch

Min. 1 ft.

Min. 1 ft. 2 inch

Min. 12 ft.

Min. 8 inch

Only up to 3 units can be installed side-by-side under the above conditions. The next group must be spaced at least 1 ft. away from the first group.

8

S4359249

Exhaust fan

Hot air

Out-

door

unit

Fig. 2-1

Min.

1 inch

4 in.

Min. 2 ft.

0931_C_1

Fig. 2-2

Min. 8 inch

Min. 1 ft.

Air in

Air

discharge

Concrete block

4 inch x 1 ft. 4 inch

beams or equal

Anchor bolts

(4 pieces)

Fig. 2-3

Heat source

0591_C_1

Obstacle above

Min.

7 ft.

Air

dis-

charge

Ground

0932_C_1

Min. 4 ft.

Air

discharge

chamber

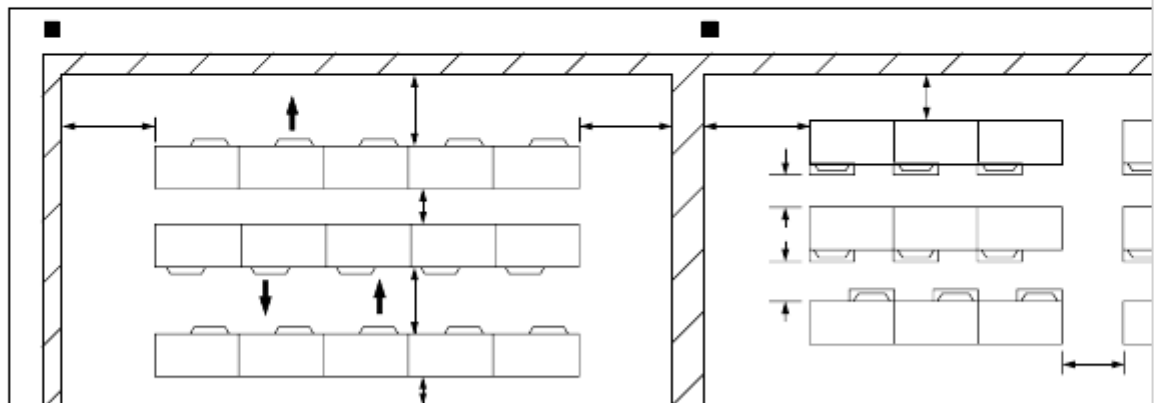
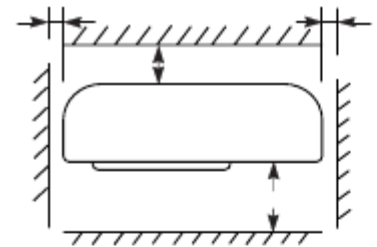
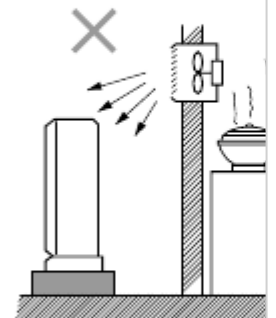
Min. 1 ft.

0933_C_5

Air in

Min. 6 inch

0934_C_1



[Table of Contents](#)

[Previous Page](#)
[Next Page](#)

1
...
5
6
7
8
9
10
11
12

Quick Links:

[Table of Contents](#)

[General](#)

[Indoor Unit](#)

[Outdoor Unit](#)

[Remote Control Unit](#)

Related Manuals for Sanyo C2432A

[Air Conditioner Sanyo 24KLS32A Specification Sheet](#)

Sanyo ductless split system air conditioners specification sheet (3 pages)

[Air Conditioner Sanyo 24XS32A Submittal Sheet](#)

Indoor/outdoor ceiling recessed (4-way) air conditioner (3 pages)

[Air Conditioner Sanyo XS4232 Technical Data And Service Manual](#)

(66 pages)

[Air Conditioner Sanyo KS2432A Technical Data And Service Manual](#)

(64 pages)

[Air Conditioner Sanyo KS2432A Service Manual](#)

Split system (63 pages)

[Air Conditioner Sanyo KS3032 Service Manual](#)

Split system air conditioner (56 pages)

[Air Conditioner Sanyo C3032 Service Manual](#)

Split system air conditioner (54 pages)

[Air Conditioner Sanyo KS2432 Instruction Manual](#)

Split system air conditioner; wall-mounted type ceiling-mounted type recessed type cool/fan model (24 pages)

[Air Conditioner Sanyo KS2432A Instruction Manual](#)

Cool/dry model (24 pages)

[Air Conditioner Sanyo KS2462R Instruction Manual](#)

Sanyo split system air conditioner instruction manual ks2462r (24 pages)

[Air Conditioner Sanyo KS2432A Instruction Manual](#)

(24 pages)

[Air Conditioner Sanyo KS2432 Instruction Manual](#)

Split system air conditioner cool/fan model (24 pages)

[Air Conditioner Sanyo C2432 Installation Instructions Manual](#)

Split system air conditioner (17 pages)

[Air Conditioner Sanyo 24KS62R Specifications](#)

Ductless split system air conditioners (3 pages)

[Air Conditioner Sanyo 36TS32A Datasheet](#)

Ceiling suspended air conditioner (3 pages)

[Air Conditioner Sanyo KS2432A Instruction Manual](#)

(1 page)

Related Content for Sanyo C2432A

[MINI ECO-i SPW-CR365GXH56B System Address \(Outdoor Unit\)](#)

Sanyo MINI ECO-i SPW-CR365GXH56B

[SAP-CMRV3143GJH Outdoor Unit](#)

Sanyo SAP-CMRV3143GJH

[2-WAY ECO-i SPW-C0705DXHN8 Selecting Outdoor Unit For Operation](#)

Sanyo 2-WAY ECO-i SPW-C0705DXHN8

[SAP-KM97GHS5A Neither Indoor Nor Outdoor Unit Runs](#)

Sanyo SAP-KM97GHS5A

[SPW-D253G56 \(B\) Outdoor Unit](#)

Sanyo SPW-D253G56

[SPW-D253GH56 \(B\) Outdoor Unit](#)

Sanyo SPW-D253GH56

[SAP-CMRV1426EH Outdoor Unit](#)

Sanyo SAP-CMRV1426EH

[SPW-XR253GH56 Led Indication On The Outdoor Unit's P.c.b. Ass'y](#)

Sanyo SPW-XR253GH56

This manual is also suitable for:

[Ks2432Ks2432aKs3032Cl2432aXs3632Ts3632](#) ... [Show all](#)