

Test Run Procedure - Sanyo Mini ECO-i SPW-ASR74GXH56(A/B) Installation Instructions Manual

System air conditioner

1

2

3

4

5

Table Of Contents

6

7

8

9

10

11

12

13

14

15

16

17

18
19
20
21
22
23
24
25
26
27
28
29
30
31
32
33
34
35
36
37
38
39
40
41
42
43
44
45
46
47
48
49

•

[Table of Contents](#)

•

Bookmarks



05-194
5/27/05
5:06 PM

7-2. Test Run Procedure

<Outdoor unit control PCB>
Unit No. setting switch
(S004)

(Check the link wiring.)

<Outdoor unit control PCB>
Unit No. setting switch
(S002 and S003)

Refer to Fig. 10-4

NO

Is it OK to start the compressors?
Turn ON the indoor and
outdoor unit power.

***2**

Short-circuit the mode change pin
(CN50) on the outdoor main unit PCB.
At the same time, short-circuit the
automatic address pin (CN51) for 1
second or longer, then pull it out.

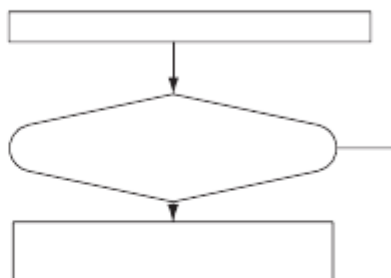
***3**

Start indoor and outdoor unit
cooling operation.

LED 1 and 2 blink alternately.

Set the wired remote controller for test run.

Refer to the remote
controller test-run
settings.



Recheck the items to check before the test run.
Have the outdoor sub units been connected?

YES

Set the unit address.

Set the No. of outdoor units.

Set the No. of indoor units.

Are the inter-unit control wires connected to more than 1 refrigerant system?

YES

Set the system address.

When multiple outdoor units exist, disconnect the terminals extended from the shorted plugs (CN33) at all outdoor main unit PCBs except for 1.

Alternatively, move the sockets to the OPEN side.

Is it possible to turn ON the power only for the 1 refrigerant system where the test run will be performed?

NO

Will automatic address setting be performed in Heating mode?

YES

CASE 3B

CASE 3A

Is it OK to start the compressors?

Turn ON the indoor and outdoor unit power.

*2

Short-circuit the automatic address pin (CN51) on the outdoor unit PCB for 1 second or longer, then release it.

*3

Start indoor and outdoor unit heating operation. LED 1 and 2 blink alternately.

NO

Are LEDs 1 and 2 on the outdoor unit PCB OFF?

YES

Check that test run preparation is OK. (Do not allow the short-circuited pins to remain short-circuited.)

NO

Does system operate?

YES

Return remote control to normal mode. End test run.

Items to Check Before the Test Run

1. Turn the remote power switch on at

NO

2. Turn the outdoor service valves (2

*1

*1

The unit with the unit

No. set to 1 is the

Use caution when making the set-

main unit. All other

units are sub units.

tings. If there are duplicated system

addresses, or if the settings for the

Nos. of the indoor units are not con-

sistent, an alarm will occur and the

system will not start.

These settings are not made on the

indoor unit PCB.

CASE 1

NO

CASE 2

YES

Make necessary corrections.

Short-circuit the automatic address pin (CN51)

on the outdoor unit PCB for 1 second or longer,

Turn OFF the indoor and

Check the alarm contents.

NO

Make necessary

corrections.

Refer to "Table of

Self-Diagnostic Functions and

Description of Alarm Displays."

Turn OFF the indoor

and outdoor unit

Check the alarm

contents.

*2 A minimum of 5 hours must have passed after the

power was turned ON to the outdoor unit.

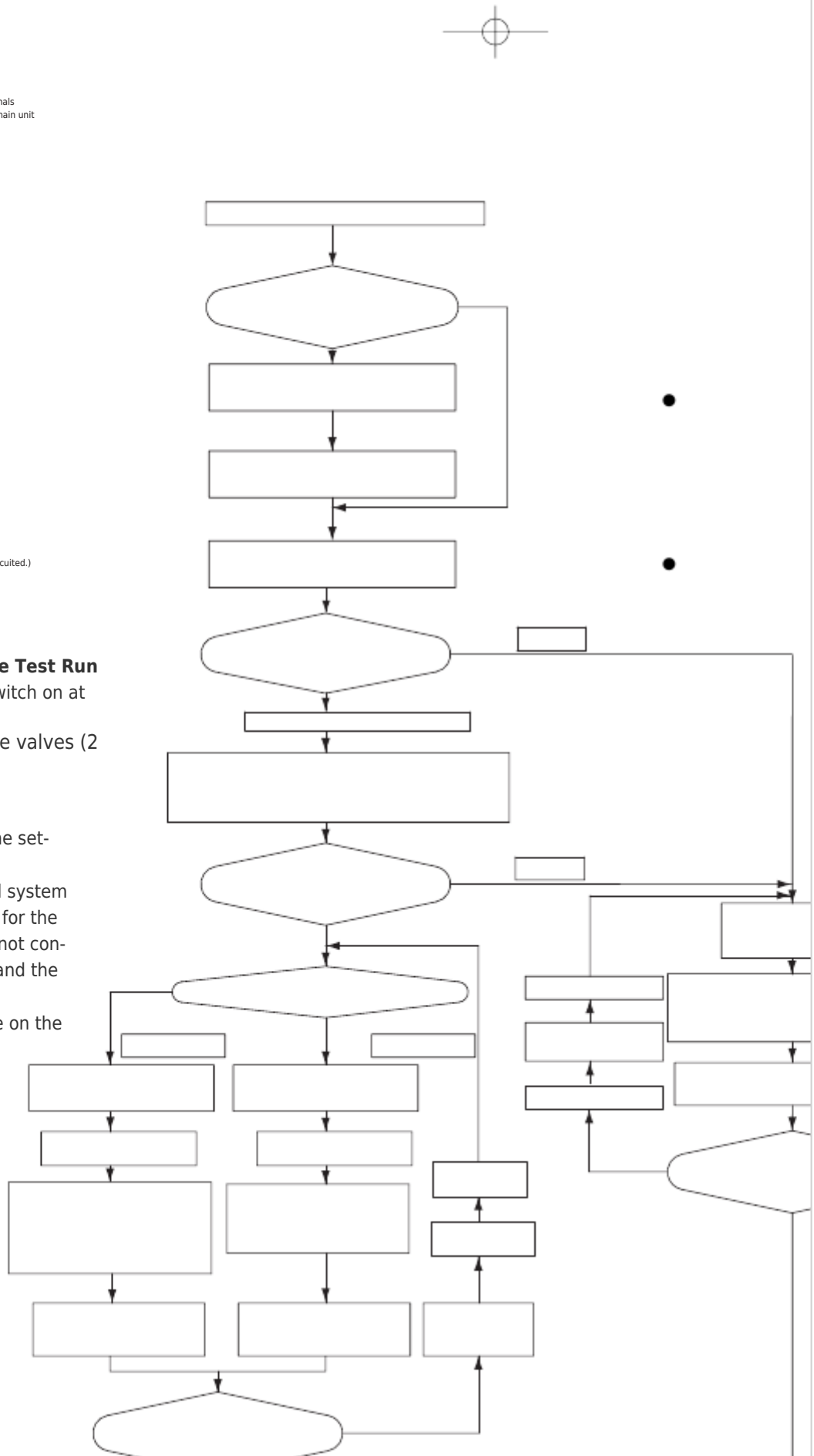
*3 All indoor units operate in all refrigerant systems

where the power is ON.

Check and make corrections according to

"Table of Self-Diagnostic Functions."

Fig. 7-3



38

least 5 hours before the test, in order to energize the crank case heater.

locations) to the full-open positions.

Turn ON the indoor and outdoor unit power for that refrigerant system only. then release it.

LED 1 and 2 blink alternately (about 2 or 3 minutes).

Are LEDs 1 and 2 on the outdoor unit PCB OFF?

YES



[Table of Contents](#)

[Previous Page](#)

[Next Page](#)

1
...
35
36
37
38
39
40
41
42

Quick Links:

[Important](#)

[Table of Contents](#)

[General](#)

[Indoor Unit](#)

[Outdoor Unit](#)

[Meaning of Alarm Messages](#)

Related Manuals for Sanyo Mini ECO-i SPW-ASR74GXH56(A/B)

[Air Conditioner Sanyo SPW-CR365GXH56 Technical Data Manual](#)

Mini eco-i system (346 pages)

[Air Conditioner Sanyo SPW-X483GH56 Installation Instruction](#)

Eco multi system air conditioner (91 pages)

[Air Conditioner Sanyo 2-WAY ECO-i SPW-C0705DXHN8 Service Manual](#)

Multi system (143 pages)

[Air Conditioner Sanyo PW-UMR184EXH56 Installation And Operation](#)

[Manual](#)

Eco-i system air conditioner (36 pages)

[Air Conditioner Sanyo ECO G SGP-EGW190M2G2W Brochure & Specs](#)

Gas driven vrf m series (9 pages)

[Air Conditioner Sanyo SPW-C1155DXHN8 Technical Data & Service Manual](#)

2-way eco-i multi system (242 pages)

[Air Conditioner Sanyo ECOi C0705DXHN8 Brochure & Specs](#)

2 and 3 pipe electric vrf systems (10 pages)

[Air Conditioner Sanyo MINI ECO-i SPW-CR365GXH56B Service Manual](#)
(252 pages)

[Air Conditioner Sanyo SPW-X253G56 Service Manual](#)

Split system (72 pages)

[Air Conditioner Sanyo SPW-X253GH56 Service Manual](#)

Split system (105 pages)

[Air Conditioner Sanyo SPW-T253GH56 Service Manual](#)

Split system (106 pages)

[Air Conditioner Sanyo SPW-D253GH56 Service Manual](#)

Split system (108 pages)

[Air Conditioner Sanyo SPW-C483GYH8 Service Manual](#)

Eco multi system (235 pages)

[Air Conditioner Sanyo Big PACi 18 Series Technical Data & Service Manual](#)

Big pack i dc inverter (275 pages)

[Air Conditioner Sanyo SPW-CR1503GDYH8 Technical Data & Service Manual](#)

W-eco multi system series (377 pages)

[Air Conditioner Sanyo SPW-XR254EH56 Installation And Operation Manual](#)

Dc inverter air conditioner (40 pages)

Related Content for Sanyo Mini ECO-i SPW-ASR74GXH56(A/B)

[SPW-CR1503GDYH8 \(B\) Use The Test Run Procedure](#)

Sanyo SPW-CR1503GDYH8

[SPW-C256VH Test Run Procedure](#)

Sanyo SPW-C256VH

[Big PACi 18 Series Test Run Procedure](#)

Sanyo Big PACi 18 Series

[SPW-C483GYH8 \(B\) Use The Test Run Procedure](#)

Sanyo SPW-C483GYH8

[SPW-C0705DZH8 Test Run Procedure](#)

Sanyo SPW-C0705DZH8

[SPW-T253GH56 Test Run Procedure](#)

Sanyo SPW-T253GH56

[SPW-U253GH56 Test Run Procedure](#)

Sanyo SPW-U253GH56

[SPW-X253GH56 Test Run Procedure](#)

Sanyo SPW-X253GH56

This manual is also suitable for:

[Mini eco-i spw-asr94gxx56\(a/b\)](#)[Mini eco-i spw-asr124gxx56\(a/b\)](#)[Mini eco-i spw-ldr94gxx56\(a/b\)](#)[Mini eco-i spw-ldr124gxx56\(a/b\)](#)[Mini eco-i spw-ldr184gxx56\(a/b\)](#)[Mini eco-i spw-ldr254gxx56\(a/b\)](#) ... [Show all](#)