

# Asus PRIME H310M-D Quick Start Manual



1  
2

--

•

## Bookmarks

[Download this manual](#)

## Quick Links



# PRIME H310M-D

quick start guide  
Кратко руководство за бърз старт

Stručná příručka

Quick Start-vejledning

Snelstartgids

Lühijuhend

Guide de démarrage rapide

Pikakäynnistysopas

Schnellstarthilfe

Οδηγός γρήγορης έναρξης

Beüzemelési útmutató

Guida Rapida

Panduan Ringkas

Snelstartgids

Lühijuhend

Жылдам іске қосу нұсқаулығы

Guide de démarrage rapide

Pikakäynnistysopas

Greitos darbo pradžios vadovas

Schnellstarthilfe

Οδηγός γρήγορης έναρξης

Beüzemelési útmutató

Instrukcja szybkiej instalacji

Краткое руководство

## Step 1

Install the CPU

Инсталирайте процесора

Instalace procesoru

Installer CPU'en

De CPU installeren

Paigaldage CPU

Installer le CPU

Asenna suoritin

Installieren der CPU

Εγκατάσταση της CPU

Helyezze be a CPU-t

Installare la CPU

Pasang CPU

CPUを設置する

CPU орнатыңыз

CPU 설치

Sumontuokite centrinį procesorių



## Step 2

Uzdādiēt centrālo procesoru

Instalare centralprosessoren (CPU)

Instale a CPU

Instalacja procesora

Установка процессора

Instalați CPU-ul

Instalar la CPU

Instalirajte CPU

Instalácia centrálneho procesora

Installera CPU

ඔබේ CPU

CPU'yu takin

Lâp CPU

Instalacija procesora

Инсталюйте процесор (CPU)

قم بتثبيت وحدة المعالجة المركزية (CPU)

CPU را نصب کنید

Uzdādiēt centrālo procesoru

Instalare centralprosessoren (CPU)

Instalacja procesora

Install the CPU

Инсталирайте процесора

Instalace ve

Installer CP

De CPU-ver

Paigaldage

Installer le

Asenna suo

Installieren

Εγκατάστα

Szerelje be

Installare la

Pasang kip

CPUファン

CPU желд

CPU 팬 설

Sumontuok

Uzdādiēt c

Installer CP

Instale a ve

Instalacja w

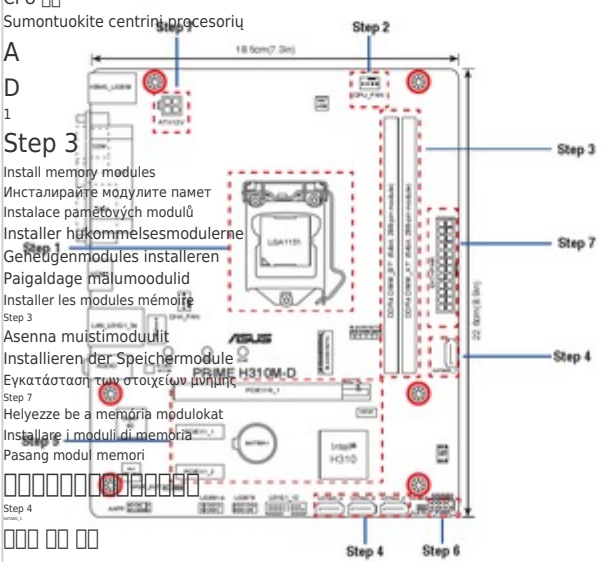
Установка



From 1 January 2012 updated warranties apply to all ASUS products, consistent with the Australian Consumer Law. For the latest product warranty details please visit <http://www.asus.com/support/>. Our goods come with guarantees that cannot be excluded under the Australian Consumer Law. You are entitled to a replacement or refund for a major failure and compensation for any other reasonably foreseeable loss or damage. You are also entitled to have the goods repaired or replaced if the goods fail to be of acceptable quality and the failure does not amount to a major failure. If you require assistance please call ASUS Customer Service 1300 2787 88 or visit us at <http://www.asus.com/edp/au/>

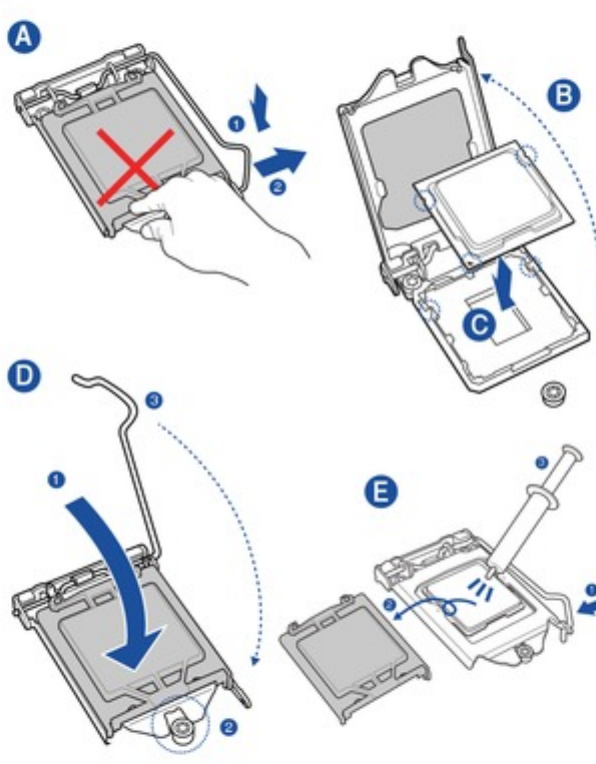
India E-waste (Management) Rules 2016  
This product complies with the "India E-waste (Management) Rules, 2016" and prohibits the use of hazardous substances such as Chromium, polybrominated biphenyls (PBBs) and polybrominated diphenyl ethers (PBDEs) in concentrations exceeding 0.1% by weight in homogenous materials and 0.01 % by weight in homogenous materials for cadmium, except for the exemptions listed in Schedule II of the Rule.

### Motherboard Layout



### Step 1

Install the CPU  
Иnstallиpaйтe пpoцecopa  
Instalace procesoru  
Installeer de CPU  
De CPU installeren  
Paigaldage CPU  
Installeer le CPU  
Asenna suoritin  
Installieren der CPU  
Εγκατάσταση της CPU  
Helyezze be a CPU-t  
Installare la CPU  
Pasang CPU  
CPUを設置する  
CPU орнaтыңыз  
CPU 설치  
Sumontuokite centrinį procesorių



### Step 3

Install memory modules  
Иnstallиpaйтe мoдyльте пaмeт  
Instalace paměťových modulů  
Installeer hukommelsesmodulerne  
Geheugenmodules installeren  
Paigaldage mäluoodulid  
Installeer les modules mémoire  
Asenna muistimoduulit  
Installieren der Speichermodule  
Εγκατάσταση των στοιχείων μνήμης  
Helyezze be a memória modulokat  
Installare i moduli di memoria  
Pasang modul memori  
メモリーモジュールを設置する  
Жад модульдерін орнaтыңыз  
메모리 모듈 설치  
Sumontuokite atminties modulius

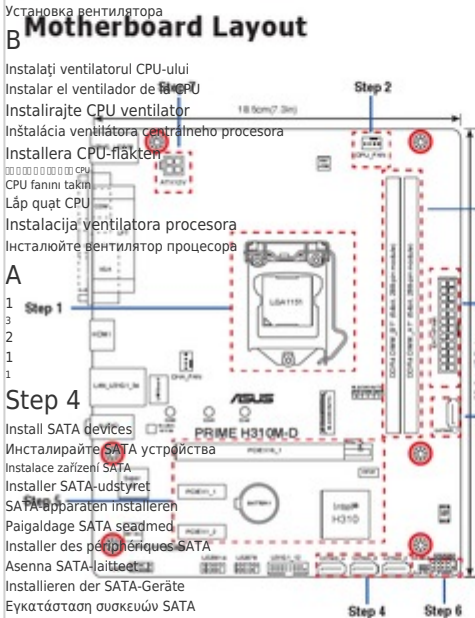
### Step 2

Uzstādiet centrālo procesoru  
Installeer sentralprosessoren (CPU)  
Instale a CPU  
Instalacja procesora  
Установка процессора  
Instalați CPU-ul  
Instalar la CPU  
Instalirajte CPU  
Instalácia centrálneho procesora  
Installera CPU  
ထင်ရှား CPU  
CPU'yu takin  
Lắp CPU  
Instalacija procesora  
Иnstallюйтe пpoцecop  
(CPU) قه بتهئیت وحهة المعالجه المركزية  
CPU را نصب کنید  
Sumontuokite centrinį procesorių  
Uzstādiet c  
Installeer CP  
Instale a ve  
Instalacja w  
Установка  
Instalați ve  
Instalar el v  
Instalirajte  
Instalácia v  
Installera C  
ထင်ရှား  
CPU fanin  
Lắp quạt C  
Instalacija v  
Иnstallюйтe



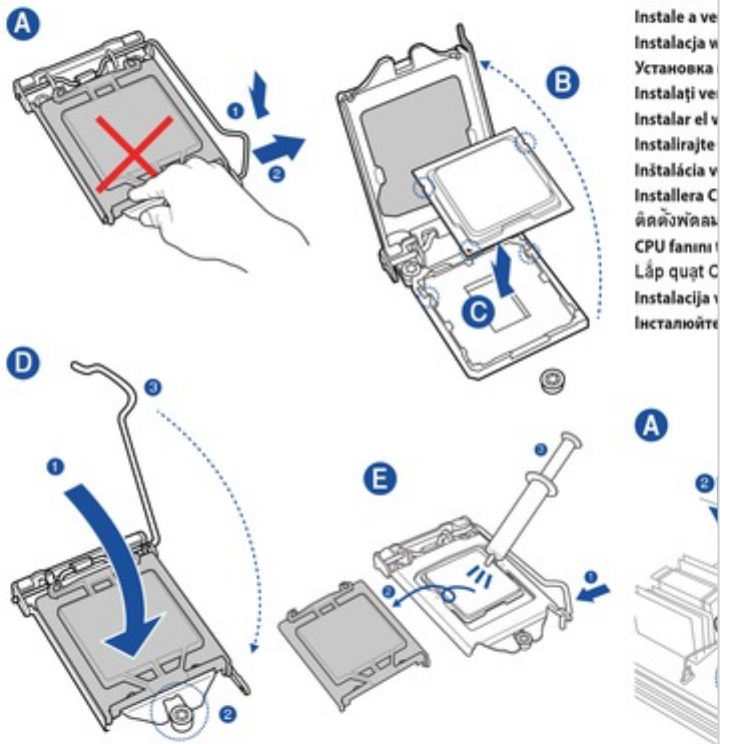
### Step 4

Uzstādiet atmiņas moduljus  
Installeer minnemoduler  
Instale módulos de memória  
Instalacja modułów pamięci  
Установка модулей памяти  
Instalați modulele de memorie  
Instalar los módulos de memoria  
Instalirajte module memorije  
Instalácia pamäťových modulov  
Installera minnesmoduler  
ထင်ရှားမှတ်တမ်းကား  
Bellek modüllerini takin  
Lắp các thanh nhớ  
Instalacija memorijskih modula  
Иnstallюйтe мoдyли пaм'яті  
تهئیت وحهة الذاكرة  
مادول های حافظه را نصب کنید  
Sumontuokite atminties modulius  
Installeer SATA  
Instalace za  
Installeer SA  
SATA-appar  
Paigaldage  
Installeer de  
Asenna SAT  
Installieren  
Εγκατάστα  
Szerelje be  
Installare i  
Pasang per  
SATA Deba  
SATA κύρι  
SATA 장치  
Sumontuok



### Step 1

Install the CPU  
 Исталирайте процесора  
 Instalece procesor  
 Installer CPU'en  
 De CPU installeren  
 Paigaldage CPU  
 Installer le CPU  
 Asenna suoritin  
 Installieren der CPU  
 Εγκατάσταση της CPU  
 Helyezze be a CPU-t  
 Installare la CPU  
 Pasang CPU  
 CPUを設置する  
 CPU орнатыңыз  
 CPU 설치  
 Sumontuokite centrinį procesorių



### Step 3

Install memory modules  
 Исталирайте модулите памет  
 Instalece paměťových modulů  
 Installer hukommelsesmodulerne  
 Geheugenmodules installeren  
 Paigaldage mälumoodulid  
 Installer les modules mémoire  
 Asenna muistimoduulit  
 Installieren der Speichermodule  
 Εγκατάσταση των στοιχείων μνήμης  
 Helyezze be a memória modulokat  
 Installare i moduli di memoria  
 Pasang modul memori  
 メモリーモジュールを設置する  
 Жад модульдерін орнатыңыз  
 메모리 모듈 설치  
 Sumontuokite atminties modulius

Uzdėdiete centrālā procesorū  
 Installer sentralprosessoren (CPU)  
 Instalece a CPU  
 Instalacija procesora  
 Установка процессора  
 Installera CPU  
 Instalar la CPU  
 Instalirajte CPU  
 Instalação centralneho procesora  
 Installera CPU  
 Централно упръване за бърз старт  
 you takin  
 Láp CPU  
 Quick Start vejledning  
 Упръвање процесора  
 1  
 2  
**Lühijuhend**  
**Guide de démarrage rapide**  
**Pikakäynnistysopas**  
**Schnellstarthilfe**  
**Οδηγός γρήγορης έναρξης**  
 Uzdėdiete atminas modulius  
 Installer minnesmoduler  
 Instala módulos de memória  
 Instalacja modułów pamięci  
 Установит модули памяти  
 Installe modulele de memorie  
 Instalar los módulos de memoria  
 Installera minnesmoduler  
 Instalar el minnesmoduler  
 Instalação de memória  
 Installera minnesmoduler  
 Beltek modüllerini takin  
 Láp cseréni

### Step 2

Uzdėdiete atminas modulius  
 Installer minnesmoduler  
 Instala módulos de memória  
 Instalacja modułów pamięci  
 Установит модули памяти  
 Installe modulele de memorie  
 Instalar los módulos de memoria  
 Installera minnesmoduler  
 Instalar el minnesmoduler  
 Instalação de memória  
 Installera minnesmoduler  
 Beltek modüllerini takin  
 Láp cseréni  
 Instalação de memória  
 Installera minnesmoduler  
 Beltek modüllerini takin  
 Láp cseréni  
 Instalação de memória  
 Installera minnesmoduler  
 Beltek modüllerini takin  
 Láp cseréni



### Step 4

Uzdėdiete atminas modulius  
 Installer minnesmoduler  
 Instala módulos de memória  
 Instalacja modułów pamięci  
 Установит модули памяти  
 Installe modulele de memorie  
 Instalar los módulos de memoria  
 Installera minnesmoduler  
 Instalar el minnesmoduler  
 Instalação de memória  
 Installera minnesmoduler  
 Beltek modüllerini takin  
 Láp cseréni  
 Instalação de memória  
 Installera minnesmoduler  
 Beltek modüllerini takin  
 Láp cseréni  
 Instalação de memória  
 Installera minnesmoduler  
 Beltek modüllerini takin  
 Láp cseréni

Install SATA devices  
 Исталирайте SATA устройства  
 Instalece zařízení SATA  
 Installer SATA-udstyret  
 SATA-apparaten installeren  
 Paigaldage SATA seadmed  
 Installer des périphériques SATA  
 Asenna SATA-laitteet  
 Installieren der SATA-Geräte  
 Εγκατάσταση συσκευών SATA

### Step 4



تثبيت وحدات الذاكرة  
 مبادل های حافظه را نصب کنید  
 Sumontuokite atminties modulius



Next Page

1  
2

## Related Manuals for Asus PRIME H310M-D

[Motherboard Asus PRIME H310M-D Manual](#)

(29 pages)

[Motherboard Asus PRIME H310M-D R2.0 Manual](#)

(27 pages)

[Motherboard Asus PRIME H310M-DASH Manual](#)

(27 pages)

[Motherboard Asus PRIME H310M-DASH R2.0 Manual](#)

(26 pages)

[Motherboard Asus PRIME H310M-E Manual](#)

(28 pages)

[Motherboard Asus PRIME H310M-A User Manual](#)

(29 pages)

[Motherboard Asus PRIME H310M-A R1.0 Instruction Manual](#)

(29 pages)

[Motherboard Asus PRIME H310M-K Manual](#)

(27 pages)

[Motherboard Asus PRIME H310M-C R2.0 Manual](#)

(28 pages)

[Motherboard Asus PRIME H310M-R R2.0 Manual](#)

(25 pages)

[Motherboard Asus TUF H310M-PLUS GAMING R2.0 Manual](#)

(27 pages)

[Motherboard Asus PRIME H310M-A R2.0 Manual](#)

(29 pages)

[Motherboard Asus PRIME H310M-E R2.0 Manual](#)

(28 pages)

[Motherboard Asus PRIME H310M-AT R2.0 Manual](#)

(29 pages)

[Motherboard Asus PRIME H310M2 R2.0 Manual](#)

(26 pages)

[Motherboard Asus PRIME H310M-C/PS R2.0 Manual](#)

(54 pages)

## Summary of Contents for Asus PRIME H310M-D

[Page 1](#) You are also entitled to have the goods repaired or replaced if the goods fail to be of acceptable quality and the failure does not amount to a major failure. If you require assistance please call ASUS Customer Service 1300 2787 88 or visit us at <http://www.asus.com/support/> India E-waste (Management) Rules 2016 This product complies with the "India E-Waste (Management) Rules, 2016"...

[Page 2](#) Step 5 Step 6 Step 7 Install expansion card(s) Install system panel connectors Install ATX power connectors Инсталирайте допълнителна карта (допълнителни карти) Инсталирайте конекторите на ситемния панел Инсталирайте ATX конекторите за захранване Instalace přídatné karty (karet) Instalace konektorů panelu systému Instalace

konektorů...