

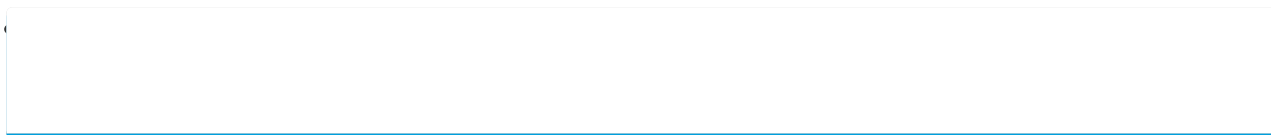
Test Run Procedure - Sanyo CHDZ07263 Service Manual

1
2
3
4
5
6
7
8
9
10
11
12
13
14
15
16
17
18

19
20
21
22
23
24
25
26
27
28
29
30
31
32
33
34
35
36
37
38
39
40
41
42
43
44
45
46
47
48
49
50
51
52
53
54
55
56
57
58
59
60
61
62
63
64
65
66
67
68

69
70
71
72
73
74
75
76
77
78
79
80
81
82
83
84
85
86
87
88
89
90
91
92
93
94
95
96
97
98
99
100
101
102
103
104
105
106
107
108
109
110
111
112
113
114
115
116
117
118

119
120
121
122
123
124
125
126
127
128



•

•

Bookmarks



1. Test Run

1-2. Test Run Procedure

Recheck the items to check before the test run.

Have the outdoor sub units been connected?

<Outdoor unit control PCB>

Unit No. setting switch

(S007)

<Outdoor unit control PCB>

Unit No. setting switch

(S006)

<Outdoor unit control PCB>

Unit No. setting switch

(S004 and S005)

(Check the link wiring.)

connected to more than 1 refrigerant

<Outdoor unit control PCB>

Unit No. setting switch

(S002 and S003)

When multiple outdoor main units exist, disconnect the terminals

extended from the shorted plugs (CN003) at all outdoor main unit

Alternatively, move the sockets to the OPEN side.

Is it possible to turn ON the power only

for the 1 refrigerant system where the

Will automatic address setting be

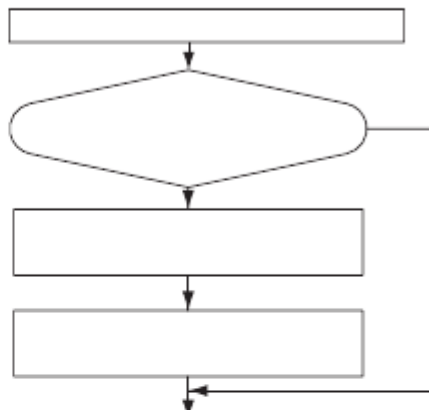
NO

CASE 3B

Is it OK to start the compressors?

Is it OK to start the compressors?

Turn ON the indoor and



outdoor unit power.

*2

*2

Short-circuit the mode change pin (CN101) on the outdoor main unit PCB. At the same time, short-circuit the unit PCB for 1 second or longer, automatic address pin (CN100) for 1 second or longer, then release it.

*3

Start indoor and outdoor unit cooling operation. LED 1 and 2 blink alternately. Are LED 1 and 2 on the outdoor unit PCB OFF?

YES Check that test run preparation is OK. (Do not allow the short-circuited pins to remain short-circuited.) Set the wired remote controller for test run. Refer to the remote controller test-run settings. Does system operate?

YES

Return remote control to normal mode. End test run.

NO

YES

*1

Set the unit address. Set the No. of outdoor units. Set the No. of indoor units.

NO

Are the inter-unit control wires system?

YES

Set the system address. PCBs except for 1.

YES

test run will be performed?

NO

performed in Heating mode?

YES

CASE 3A

Turn ON the indoor and outdoor unit power. Make necessary corrections

Turn OFF the indoor then release it. and outdoor unit. Start indoor and outdoor unit heating operation. Check the alarm contents. LED 1 and 2 blink alternately.

NO

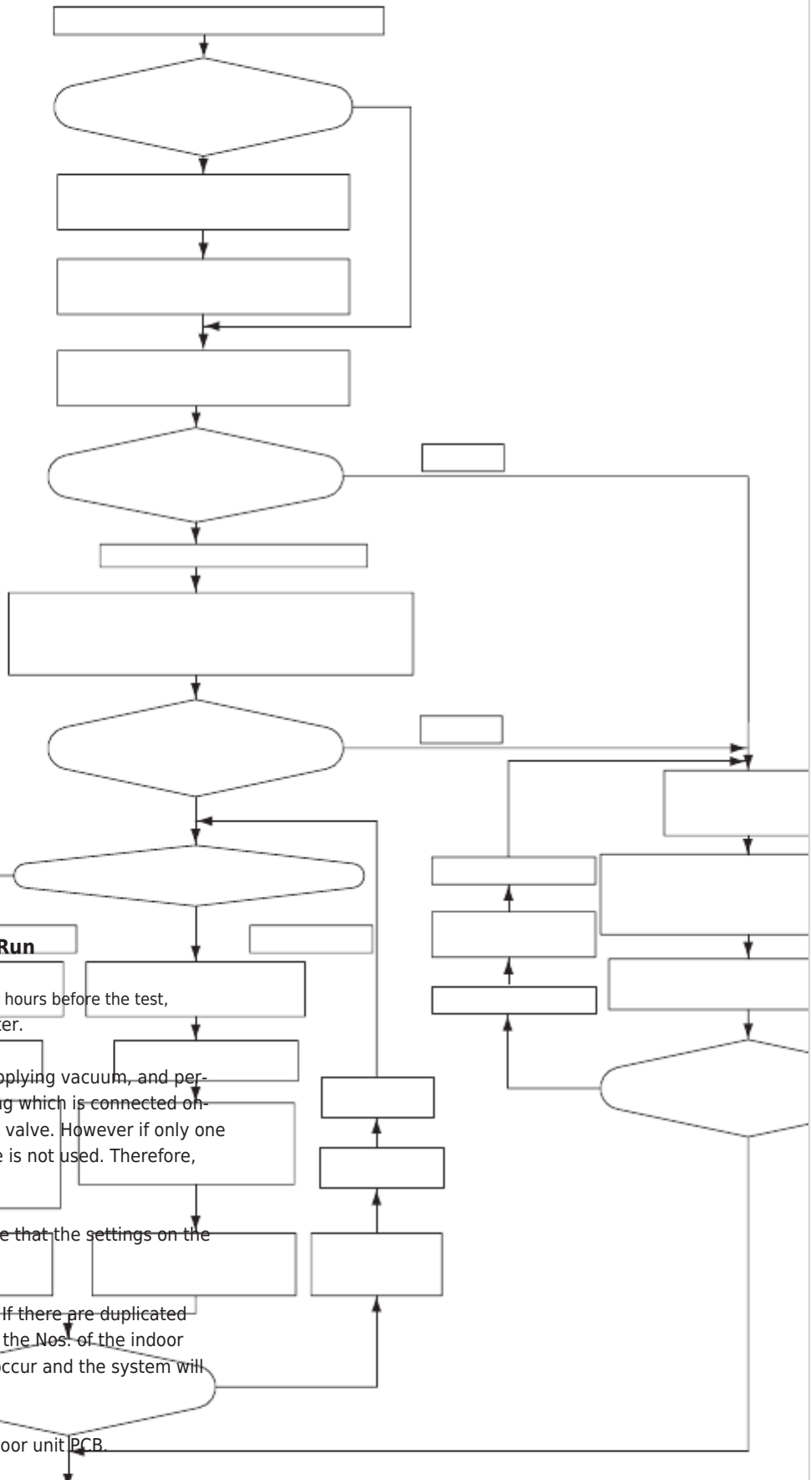
NO

Check and make corrections according to "Table of Self-Diagnostic Functions."

Items to Check Before the Test Run

1. Turn the remote power switch on at least 5 hours before the test, in order to energize the crankcase heater.
2. After performing the leak inspection, applying vacuum, and performing refrigerant charge for the tubing which is connected on-site, fully open the outdoor unit service valve. However if only one outdoor unit is installed, a balance tube is not used. Therefore, leave the valve fully closed.
3. When replacing the control PCB, be sure that the settings on the new PCB match those on the old PCB.
4. Use caution when making the settings. If there are duplicated system addresses, or if the settings for the Nos. of the indoor units are not consistent, an alarm will occur and the system will not start.
5. These settings are not made on the indoor unit PCB.

CASE 1



Note: It is not necessary to remove the socket that is used to short-circuit the terminal plugs from the outdoor sub unit PCBs.

CASE 2

Turn ON the indoor and outdoor unit power for that refrigerant system only.

Make necessary corrections.

Short-circuit the automatic address pin (CN100) on the outdoor main unit PCB for 1 second or longer, then release it.

Turn OFF the indoor and outdoor unit power.

LED 1 and 2 blink alternately (about 2 or 3 minutes).

Check the alarm contents.

NO

Are LED 1 and 2 on the outdoor unit PCB OFF?

Refer to "Table of Self-Diagnostic Functions and Description of Alarm Displays."

1 - 3

Test Run

*1

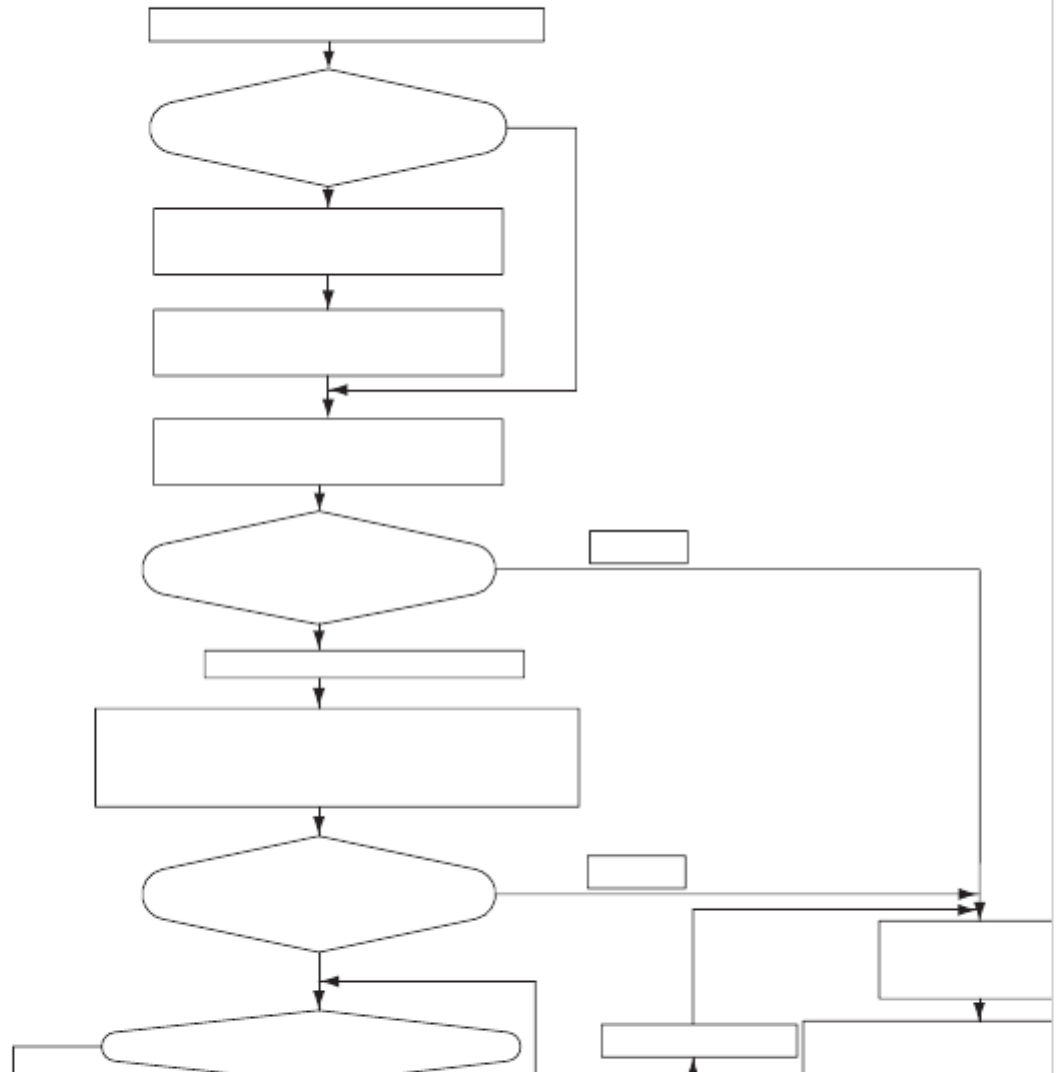
The unit with the unit No. set to 1 is the main unit. All other units are sub units.

*2

A minimum of 5 hours must have passed after the power was turned ON to the outdoor unit.

*3

All indoor units operate in all refrigerant systems where the power is ON.



[Table of Contents](#)

[Previous Page](#)
[Next Page](#)

1
...
4
5
6
7
8
9
10
11

Quick Links:

[Table of Contents](#)

Chapters

[Section 1](#) 4

[Section 2](#) 21

[Outdoor Unit Control Pcb/Indoor Unit Control Pcb](#) 91

Related Manuals for Sanyo CHDZ07263

[Air Conditioner Sanyo ECO-i CHDZR07263 Series Service Manual](#)

(146 pages)

[Air Conditioner Sanyo ECO-i AHX0752 Technical Data Manual](#)

(265 pages)

[Air Conditioner Sanyo MINI ECO-i XHX1252 Service Manual & Test Run Service Manual](#)

(190 pages)

[Air Conditioner Sanyo CHDXR09663* Service Manual](#)

2-way eco-i multi system (142 pages)

[Air Conditioner Sanyo AHX0752 Service Manual](#)

W-2way eco-i multi system (114 pages)

[Air Conditioner Sanyo W-3WAY ECO-i 85464369098000 Installation Instructions Manual](#)

W-3way eco-i system air conditioner (106 pages)

[Air Conditioner Sanyo 85464359982001 Installation Instructions Manual](#)

W-2way system air conditioner (96 pages)

[Air Conditioner Sanyo Mini ECO-i CHXR03652 Service Manual](#)

(93 pages)

[Air Conditioner Sanyo Mini ECO-i 85464359981002 Installation Instructions Manual](#)

Sanyo air conditioner installation instructions (90 pages)

[Air Conditioner Sanyo R410A Installation Instructions Manual](#)

W-3way eco-i system air conditioner (54 pages)

[Air Conditioner Sanyo XM18AAB Installation Instructions Manual](#)

W-2way system air conditioner (50 pages)

[Air Conditioner Sanyo ECO R410A Installation Instructions Manual](#)

Eco-i system air conditioner (48 pages)

[Air Conditioner Sanyo XHX1252 Instruction Manual](#)

Split system air conditioner (20 pages)

[Air Conditioner Sanyo THX2452 User Manual](#)

(4 pages)

[Air Conditioner Sanyo DHX4852 Manual](#)

Indoor unit (4 pages)

[Air Conditioner Sanyo THX1852 Manual](#)

Indoor unit (4 pages)

Related Content for Sanyo CHDZ07263

[SPW-CR1503GDYH8 \(B\) Use The Test Run Procedure](#)

Sanyo SPW-CR1503GDYH8

[SPW-C256VH Test Run Procedure](#)

Sanyo SPW-C256VH

[Big PACi 18 Series Test Run Procedure](#)

Sanyo Big PACi 18 Series

[SPW-C483GYH8 \(B\) Use The Test Run Procedure](#)

Sanyo SPW-C483GYH8

[SPW-C0705DZH8 Test Run Procedure](#)

Sanyo SPW-C0705DZH8

[SPW-T253GH56 Test Run Procedure](#)

Sanyo SPW-T253GH56

[SPW-U253GH56 Test Run Procedure](#)

Sanyo SPW-U253GH56

[SPW-X253GH56 Test Run Procedure](#)

Sanyo SPW-X253GH56

This manual is also suitable for:

[Chdz09663Chdzt07263Chdzt09663Xhx1252Xhx1852Xhx2452 ...](#) [Show all](#)