



# Chapter 1 General Adjustments; Safety Instructions - Toshiba 55A10A Service Manual



1

2

3

Table Of Contents

4

5

6

7

8

9

10

11

12

13

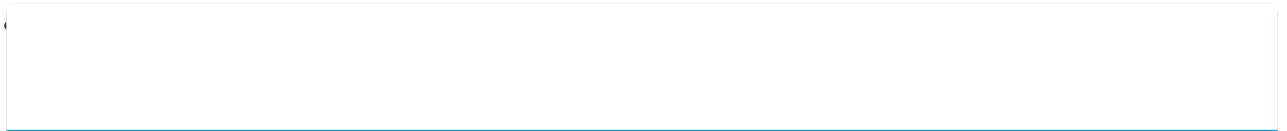
14

15

16

17

18  
19  
20  
21  
22  
23  
24  
25  
26  
27  
28  
29  
30  
31  
32  
33  
34  
35  
36  
37  
38  
39  
40  
41  
42  
43  
44  
45  
46  
47  
48  
49  
50  
51  
52



•

[Table of Contents](#)

•

## Bookmarks







## GENERAL ADJUSTMENTS

WARNING: BEFORE SERVICING THIS CHASSIS, READ THE "X-RAY RADIATION PRECAUTION", "SAFETY PRECAUTION" AND "PRODUCT SAFETY NOTICE" INSTRUCTIONS BELOW.

1. Excessive high voltage can produce potentially hazardous X-RAY RADIATION. To avoid such hazards, the high voltage must not be above the specified limit. The nominal value of the high voltage of this receiver is (A) kV at zero beam current (minimum brightness) under a 120V AC power source. The high voltage must not, under any circumstances, exceed (B) kV.

Refer to table-1 for high voltage (A), (B).

(See SETTING & ADJUSTING DATA on page 17)

Each time a receiver requires servicing, the high voltage should be checked following the HIGH VOLTAGE CHECK procedure in this manual. It is recommended that the reading of the high voltage be recorded as a part of the service

record. It is important to use an accurate and reliable high voltage meter.

**WARNING :** Service should not be attempted by anyone unfamiliar with the necessary precautions on this receiver. The following are the necessary precautions to be observed before servicing this chassis.

1. An isolation Transformer should be connected in the power line between the receiver and the AC line before any service is performed on the receiver.
2. Always discharge the picture tube anode to the CRT conductive coating before handling the picture tube. The picture tube is highly evacuated and if broken, glass fragments will be violently expelled. Use shatter proof goggles and keep picture tube away from the unprotected body while handling.
3. When replacing a chassis in the cabinet, always be certain that all the protective devices are put back in place, such as; non-metallic control knobs, insulating covers, shields, isolation resistor-capacitor network etc.
4. Before returning the set to the customer, always perform an AC leakage current check on the exposed metallic parts of the cabinet, such as antennas, terminals, screwheads, metal overlays, control shafts etc. to be sure the set is safe to operate without danger of electrical shock. Plug the AC line cord directly into a 120V AC outlet (do not use a line isolation transformer during this check). Use an AC voltmeter having 5000 ohms per volt or more sensitivity in the following manner:

Many electrical and mechanical parts in this chassis have special safety-related characteristics. These characteristics are often passed unnoticed by a visual inspection and the protection afforded by them cannot necessarily be obtained by using replacement components rated for higher voltage, wattage, etc. Replacement parts which have these special safety characteristics are identified in this manual and its supplements; electrical components having such features are identified by the international hazard symbols on the schematic diagram and the parts list.

Before replacing any of these components, read the parts list in this manual carefully. The use of substitute replacement parts which do not have the same safety characteristics as specified in the parts list may create shock, fire, X-ray radiation or other hazards.

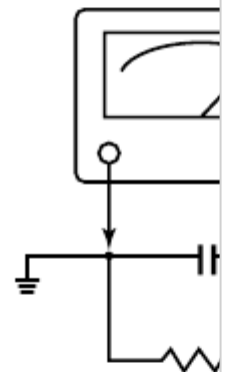
## SAFETY INSTRUCTIONS

### X-RAY RADIATION PRECAUTION

2. This receiver is equipped with a Fail Safe (FS) circuit which prevents the receiver from producing an excessively high voltage even if the B+ voltage increases abnormally. Each time the receiver is serviced, the FS circuit must be checked to determine that the circuit is properly functioning, following the FS CIRCUIT CHECK procedure in this manual.
3. The only source of X-RAY RADIATION in this TV receiver is the picture tube. For continued X-RAY RADIATION protection, the replacement tube must be exactly the same type tube as specified in the parts list.
4. Some part in this receiver have special safety-related characteristics for X-RAY RADIATION protection. For continued safety, parts replacement should be undertaken only after referring to the PRODUCT SAFETY NOTICE below.

### SAFETY PRECAUTION

Connect a 1500 ohm 10 watt resistor, paralleled by a 0.15  $\mu$ F, AC type capacitor, between a known good earth ground (water pipe, conduit, etc.) and the exposed metallic parts,



one at a time. Measure the AC voltage across the combination of 1500 ohm resistor and 0.15  $\mu$ F capacitor. Reverse the AC plug at the AC outlet and repeat AC voltage measurements for each exposed metallic part. Voltage measured must not exceed 0.3 volts rms. This corresponds to 0.2 milliamp. AC. Any value exceeding this limit constitutes a potential shock hazard and must be corrected immediately.

Good earth ground such as a water pipe, conduit, etc.

**PRODUCT SAFETY NOTICE**

- 3 -

AC VOLTMETER

0.15 $\mu$ F

Place this probe on each exposed metallic part.

1500 ohm

10 watt

[Table of Contents](#)

[Previous Page](#)  
[Next Page](#)

1  
2  
3  
4  
5  
6  
7  
8  
9

## Related Manuals for Toshiba 55A10A

### [Projection TV Toshiba 55A10 Owner's Manual](#)

Colorstream projection television (47 pages)

### [CRT TV Toshiba 50A50 55A60 Service Manual](#)

Toshiba tv manual (50 pages)

### [TV Toshiba 50A60 Service Manual](#)

N0nsp chassis (50 pages)

### [Projection TV Toshiba 50A60A Owner's Manual](#)

Toshiba projection television owner's manual (48 pages)

### [Projection TV Toshiba 50A50 Owner's Manual](#)

Colorstream projection television (48 pages)

### [TV Toshiba 50A60 Schematic Diagram](#)

(47 pages)

### [Projection TV Toshiba 50A10 Owner's Manual](#)

Toshiba projection television owner's manual 50a10 (46 pages)

### [TV Toshiba 42WL863B Owner's Manual](#)

Wl86\* digital series, yl86\* digital series (110 pages)

### [TV Toshiba 50L711U18 Manual](#)

50"/55" 2160p (4k), 60hz, led chromecast built-in tv (100 pages)

### [TV Toshiba 43 V58 Series Operating Instructions Manual](#)

(36 pages)

### [TV Toshiba 55UL5A63DG Operating Instructions Manual](#)

(35 pages)

### [TV Toshiba 43UA3A Series Operating Instructions Manual](#)

(34 pages)

### [TV Toshiba UA2063DG Operating Instructions Manual](#)

(34 pages)

### [TV Toshiba UA6B63DG Operating Instructions Manual](#)

(34 pages)

### [TV Toshiba 43C350KN Owner's Manual](#)

(37 pages)

### [TV Toshiba 43 QG5E Series Operating Instructions Manual](#)

(42 pages)

## Related Content for Toshiba 55A10A

### [29CJZ6DR Chapter 1 General Adjustments](#)

Toshiba 29CJZ6DR

### [20A3E Chapter 1 General Adjustments](#)

Toshiba 20A3E

### [43S7DE Chapter 1 General Adjustments](#)

Toshiba 43S7DE

[36HFX72 Chapter 1 General Adjustments](#)

Toshiba 36HFX72

[36A50 Chapter 1 General Adjustments](#)

Toshiba 36A50

[21CSZ2R Chapter 1 General Adjustments](#)

Toshiba 21CSZ2R

[21SZ5E1 Chapter 1 General Adjustments](#)

Toshiba 21SZ5E1

[32Z23B Chapter 1 General Adjustments](#)

Toshiba 32Z23B

This manual is also suitable for:

[50a1055a1050a6050a5055a6061a60 ... Show all](#)