

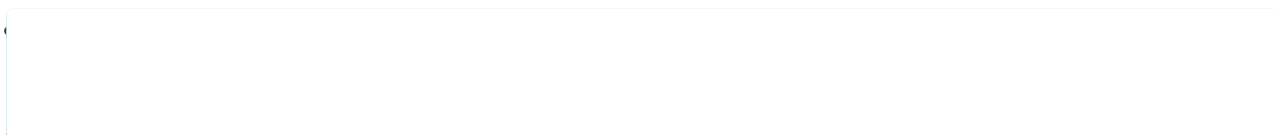
Quick Route Search - Sanyo NV-E7000 Installation And Operation Manual

Portable dvd navigation system

1
2
3
4
5
6
7
8
9
10
11
12
13
14
15
16
17
18

19
20
21
22
23
24
25
26
27
28
29
30
31
32
33
34
35
36
37
38
39
40
41
42
43
44
45
46
47
48
49
50
51
52
53
54
55
56
57
58
59
60
61
62
63
64
65
66
67
68

69
70
71
72
73
74
75
76
77
78
79
80
81
82
83
84
85
86
87
88
89
90
91
92
93
94
95
96
97
98
99
100
101
102
103
104
105
106
107
108
109
110



•

[Table of Contents](#)

•

Troubleshooting

•

Bookmarks



CHANGING THE MAP DISPLAY (4)

2

Inputting.

Example

Inputting "A" / "B" in the memo.
Clearing the inputted (A) character.

q Select

Delete
and press the
Ä button.

< You can also delete characters by
opening the remote control flip-
top and pressing the c

w Inputting "B"
65

3

When inputting is complete,

select

Done

on the item

board and press the A
button. The inputted content
is confirmed.

To change/register another item
(Name/TEL/Memo/Mark), repeat steps

1

3

to

.

4

To complete setting, inputting "B"

Press the
Display Map
on the

screen to return to the map you
stored now.

Press the N button to
return the screen to the
location map.

Press the E button to
return to the menu screen.

CHANGING THE MAP DISPLAY (4)

Example Inputting "A" → "B" in the memo.

Clearing the inputted (A) character.



1 Select **Delete** and press the
ENTER button.

< You can also delete characters by
opening the remote control flip-
top and pressing the CLEAR
button.



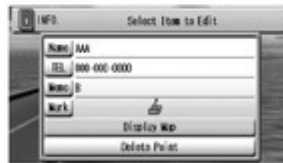
Inputting "B"



3

When inputting is complete,
select **Done** on the item
board and press the **ENTER**
button. The inputted content
is confirmed.

To change/register another item
(Name/TEL/Memo/Mark), repeat steps
1 to 3.



4

To complete setting...

Press the **Display Map** on the
screen to return to the map you
stored now.

Press the **POSITION** button to
return the screen to the present
location map.

Press the **MENU** button to
return to the menu screen.

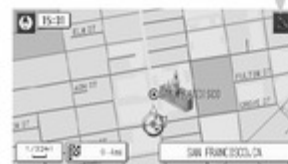
QUICK ROUTE SEARCH

Align the destination with the cursor and
search for a reference route from your pre-
sent location to the destination based on the
map disc data and the search conditions
(Faster Route/Shorter Route/Optimal,
see p.105 "Modifying route condition").
Also, if having registered the location of
your home, the unit will search for the way
home from your present location.

SEARCHING FOR A ROUTE FROM YOUR PRESENT LOCATION TO THE DESTINATION

1 Press the **POSITION** button
to confirm the present location
positioning.

If this mark is yellow,
the positioning is O.K.



Present location display screen (example)

2 Use the Joystick to scroll the
map and display the map of
the destination.

See p.62, "Moving the map".
See p.60, "Enlargement/reduction
of the map".

3 Align the cursor on the
destination and press the
Q.ROUTE button.



Choosing the most detailed map
reduces the positioning error!

QUICK ROUTE SEARCH (1)

Align the destination with the cursor and press the quick route button to initiate a
search for a reference route from your present location to the destination based on the
map disc data and the search conditions (Faster Route/Shorter Route/Optimal,
see p.105 "Modifying route conditions"). Also, if having registered the location of
your home, the unit will search for the way home from your present location.

SEARCHING FOR A ROUTE FROM YOUR PRESENT LOCATION TO THE DESTINATION

1 Press the **POSITION** button
to confirm the present location
positioning.

If this mark is yellow,
the positioning is O.K.

Present location display screen (example)

2

Use the Joystick to scroll the
map and display the map of
the destination.

See p.62, "Moving the map".
See p.60, "Enlargement/reduction
of the map".

3 Select **Delete** and press the
ENTER button.

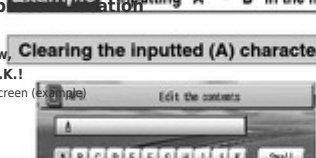
You can also delete characters by
opening the remote control flip-
top and pressing the CLEAR
button.

Cursor
Choosing the most detailed map

CHANGING THE MAP DISPLAY (4)

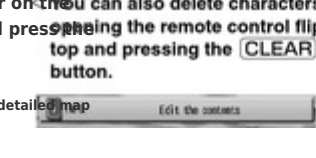
Example Inputting "A" → "B" in the memo.

Clearing the inputted (A) character.



1 Select **Delete** and press the
ENTER button.

< You can also delete characters by
opening the remote control flip-
top and pressing the CLEAR
button.



3

When inputting is complete,
select **Done** on the item
board and press the **ENTER**
button. The inputted content
is confirmed.

To change/register another item
(Name/TEL/Memo/Mark), repeat steps
1 to 3.



4

To complete setting...

Press the **Display Map** on the
screen to return to the map you
stored now.

Press the **POSITION** button to
return the screen to the present

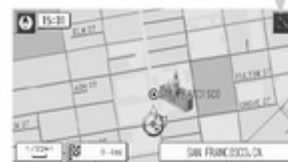
QUICK ROUTE SEARCH

Align the destination with the cursor and
search for a reference route from your pre-
sent location to the destination based on the
map disc data and the search conditions
(Faster Route/Shorter Route/Optimal,
see p.105 "Modifying route condition").
Also, if having registered the location of
your home, the unit will search for the way
home from your present location.

SEARCHING FOR A ROUTE FROM YOUR PRESENT LOCATION TO THE DESTINATION

1 Press the **POSITION** button
to confirm the present location
positioning.

If this mark is yellow,
the positioning is O.K.



Present location display screen (example)

2 Use the Joystick to scroll the
map and display the map of
the destination.

See p.62, "Moving the map".
See p.60, "Enlargement/reduction
of the map".

3 Align the cursor on the
destination and press the
Q.ROUTE button.



Choosing the most detailed map
reduces the positioning error!

reduces the positioning error!

4

Select and press the YES button.

This initiates a reference route search. When the search is complete, wait a moment until the route information appears.

NO

YES

You can interrupt

NO

searches by pressing the YES button.

When pressing the

Q.ROUTE

button

and a confirmation message appears

to set highways, select

YES

to register highways or

NO

to register

local roads and press the A

button.

66

I

CHANGING THE MAP DISPLAY (4)

2 Inputting.

Example Inputting "A" → "B" in the memo.

Clearing the inputted (A) character.



1 Select **Delete** and press the **ENTER** button.

< You can also delete characters by opening the remote control flip-top and pressing the **CLEAR** button.



3 When inputting is complete, select **Done** on the item board and press the **ENTER** button. The inputted content is confirmed.

To change/register another item (Name/TEL/Memo/Mark), repeat steps 1 to 3.



4 To complete setting... Press the **Display Map** on the screen to return to the map you stored now. Press the **POSITION** button to return the screen to the present

QUICK ROUTE SEARCH

Align the destination with the cursor and search for a reference route from your present location on the map disc data and the search conditions. (See p.105 "Modifying route conditions") When you press the **Q.ROUTE** button from your home, the unit will search for the w

SEARCHING FOR A ROUTE FROM YOUR PRESENT LOCATION TO THE DESTINATION

1 Press the **POSITION** button to confirm the present location positioning.

If this mark is yellow, the positioning is O.K.



Present location display screen (example)

[Table of Contents](#)

[Previous Page](#)
[Next Page](#)

1
...
33
34
35
36
37
38
39
40

Chapters

Introduction	11
Navi Operation	30
DVD/CD/Jpeg Imaging Operation	76
Other	95

Related Manuals for Sanyo NV-E7000

[Car Navigation system Sanyo NV-E7000 Service Manual](#)

Portable dvd navigation system (68 pages)

[Car Navigation system Sanyo NV-E7000 Service Manual](#)

Portable dvd navigation system (7 pages)

[Car Navigation system Sanyo NV-E7000 Supplementary Manual](#)

Portable dvd navigation system (3 pages)

[Car Navigation system Sanyo NV-E7000 Specifications](#)

Portable/automotive navigation system & mobile dvd entertainment system (2 pages)

[Car Navigation system Sanyo NVM-4030 Instruction Manual](#)

Portable navigation system (41 pages)

[Car Navigation system SANYO NVM-4030 Instruction Manual](#)

Portable navigation system (42 pages)

[Car Navigation system SANYO NVM-4070 Instruction Manual](#)

Portable navigation system (45 pages)

[Car Navigation system Sanyo NVM-4070 Instruction Manual](#)

Portable navigation system (30 pages)

[Car Navigation system Sanyo Easy Street NVM-4070 Instruction Manual](#)

Sanyo easy street nvm-4070: user guide (45 pages)

[Car Navigation system Sanyo Easy Street NVM-4050 Instruction Manual](#)

Sanyo easy street nvm-4050: user guide (40 pages)

[Car Navigation system SANYO NVM-4050 Instruction Manual](#)

Portable navigation system (41 pages)

[Car Navigation system Sanyo NVM-4370 Instruction Manual](#)

Portable (8 pages)

Related Products for Sanyo NV-E7000

[Sanyo NVM-4030 - Easy Street - Automotive GPS Receiver](#)

[SANYO NVM-4070](#)

[SANYO NVM-4050](#)

[Sanyo NV-E7500 - Navigation System With DVD Player](#)

[Sanyo NVM 4370 - Easy Street - Automotive GPS Receiver](#)

[Sanyo NBL414](#)

[Sanyo NVM-4370](#)

[Sanyo NBL621](#)