



# Refrigerant Cycle Diagram - Toshiba RAS-B10SKVP-E Service Manual

Split type air conditioner



1  
2  
3  
4  
5  
6  
7  
8  
9  
10  
11  
12  
13  
14  
15  
16  
17  
18

19  
20  
21  
22  
23  
24  
25  
26  
27  
28  
29  
30  
31  
32  
33  
34  
35  
36  
37  
38  
39  
40  
41  
42  
43  
44  
45  
46  
47  
48  
49  
50  
51  
52  
53  
54  
55  
56  
57  
58  
59  
60  
61  
62  
63  
64  
65  
66  
67  
68

69  
70  
71  
72  
73  
74  
75  
76  
77  
78  
79  
80  
81  
82  
83  
84  
85  
86  
87  
88  
89  
90  
91  
92  
93  
94  
95  
96  
97  
98  
99  
100  
101  
102  
103  
104  
105  
106  
107  
108  
109  
110  
111  
112  
113  
114  
115  
116  
117  
118



-

- 

Troubleshooting



•

## Bookmarks





## 7-1. Refrigerant Cycle Diagram

Pressure measurement

P

Gauge attaching port

Vacuum pump connecting port

Deoxidized copper pipe

Outer dia.:

9.52mm (10SAVP-E, -ND)

9.52mm (13SAVP-E, -ND)

12.7mm (16SAVP-E, -ND)

Thickness: 0.8mm

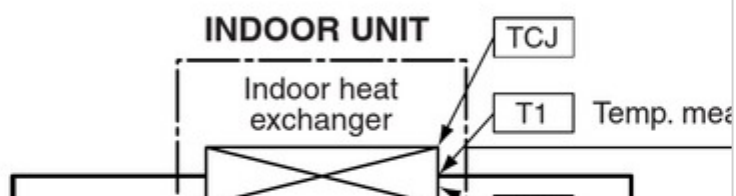
4-way valve

(STF-0108Z)

TS

## 7. REFRIGERANT CYCLE DIAGRAM

### 7-1. Refrigerant Cycle Diagram



**NOTE :**

- The maximum pipe length of this air conditioner is 25 m. When the pipe length exceeds 15m, the additional charging of refrigerant, 20g per 1m for the part of pipe exceeded 15m is required. (Max. 200g)

**7. REFRIGERANT CYCLE DIAGRAM**

**INDOOR UNIT**  
7-1. Refrigerant Cycle Diagram

Indoor heat exchanger  
Cross flow fan  
Deoxidized copper pipe  
Outer dia. : 6.35mm  
Thickness : 0.8mm  
Sectional shape of heat insulator

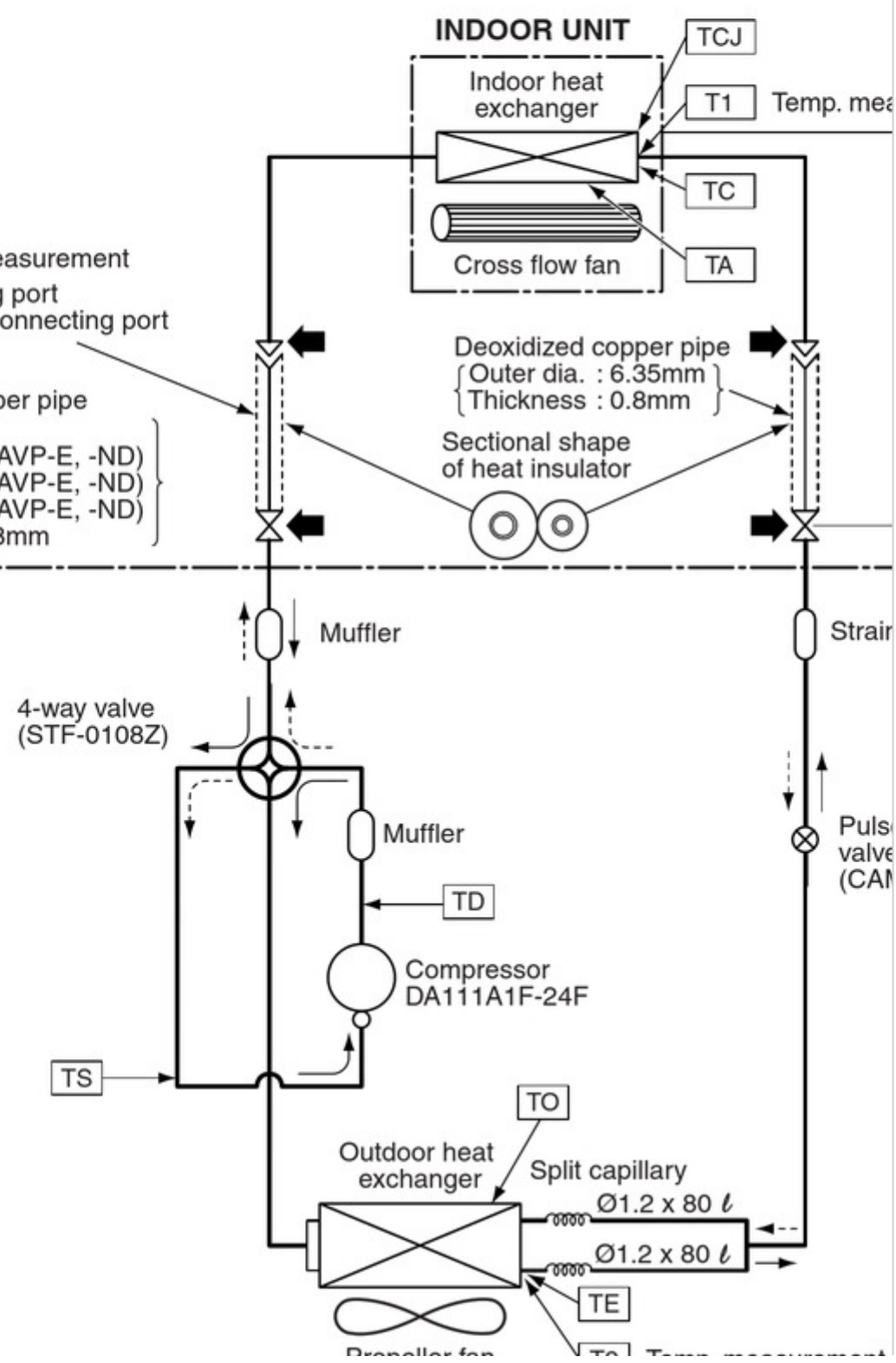
Muffler  
Muffler  
TD

Compressor  
DA111A1F-24F  
Gauge attaching port  
Outdoor vacuum pump connecting port

Propeller fan  
Deoxidized copper pipe  
Outer dia. :  
- 23 -  
9.52mm (10SAVP-E, -ND)  
9.52mm (13SAVP-E, -ND)  
12.7mm (16SAVP-E, -ND)  
Thickness: 0.8mm

TCJ  
Temp. measurement  
T1  
TC  
TA  
Strainer  
Pulse motor valve at liquid side (CAM-B22YGTF-3)  
TO  
Split capillary  
Ø1.2 x 80  
Ø1.2 x 80  
T1  
TE  
T1  
T2  
Temp. measurement

**NOTE :**  
Max. : 25m  
Min. : 2m  
Chargeless : 15m  
Charge : 20g/m (16 to 25m)



Propeller fan

Refrigerant amount : 1.05kg  
Gas leak check position  
Refrigerant flow (Cooling)  
Refrigerant flow (Heating)

## 7 REFRIGERANT CYCLE DIAGRAM

[Table of Contents](#)

[Previous Page](#)  
[Next Page](#)

1  
...  
20  
21  
22  
23  
24  
25  
26  
27

Quick Links:

[Specifications](#)

[How to Diagnose the Trouble](#)

[How to Replace the Main Parts](#)

[Exploded Views and Parts List](#)

## Chapters

[Table of Contents](#) 2

[Operation Description 9-2. 1. Basic Operation](#) 28

### Related Manuals for Toshiba RAS-B10SKVP-E

[Air Conditioner Toshiba RAS-B10SKVP-E Installation Manual](#)

(148 pages)



[Air Conditioner Toshiba RAS-4M23SAV-E Service Manual](#)

Split type (121 pages)

[Air Conditioner Toshiba RAS-B10SKVP-E Service Manual](#)

(120 pages)

[Air Conditioner Toshiba RAS-10SAVP-E Service Manual](#)

(119 pages)

[Air Conditioner Toshiba RAS-B10SKVP-E Service Manual](#)

Split type (117 pages)

[Air Conditioner Toshiba RAS-B10SKVP-E Service Manual](#)

(117 pages)

[Air Conditioner Toshiba RAS-B10SKVP-E Owner's Manual](#)

Split type air conditioner (91 pages)

[Air Conditioner Toshiba RAS-B10SKVP-E Owner's Manual](#)

Split type; for general public use (31 pages)

[Air Conditioner Toshiba RAS-B10SKVP-E Owner's Manual](#)

Split type (31 pages)

[Air Conditioner Toshiba RAS-B10SKVP-E Installation Manual](#)

(19 pages)

[Air Conditioner Toshiba RAS-B10SKVP-E Installation Manual](#)

Split type air conditioner (19 pages)

[Air Conditioner Toshiba RAS-16SKVP-ND Owner's Manual](#)

(230 pages)

[Air Conditioner Toshiba RAS-10SKVP-ND Installation Manual](#)

(132 pages)

[Air Conditioner Toshiba RAS-10SKVP-ND Owner's Manual](#)

(61 pages)

[Air Conditioner Toshiba RAS-B10S4KVDG-E Installation Manual](#)

(24 pages)

[Air Conditioner Toshiba RAS-B13S4KVDG-E Service Manual](#)

(149 pages)

## Related Content for Toshiba RAS-B10SKVP-E

[Carrier TCB-IFDMR01UP-UL Refrigerant Cycle Diagram](#)

Toshiba Carrier TCB-IFDMR01UP-UL

[MMD-UP0721HFP-UL Refrigerant Cycle Diagram](#)

Toshiba MMD-UP0721HFP-UL

[RAS-24J2KVG-UA Refrigerant Cycle Diagram](#)

Toshiba RAS-24J2KVG-UA

[MMD-UP0481HFP-UL Refrigerant Cycle Diagram](#)

Toshiba MMD-UP0481HFP-UL

[MMD-UP0721HFP Series Refrigerant Cycle Diagram](#)

Toshiba MMD-UP0721HFP Series

[RAS-B07G3KVSG-E Refrigerant Cycle Diagram](#)

Toshiba RAS-B07G3KVSG-E

[RAS-25S4KVDG-ND Refrigerant Cycle Diagram](#)

Toshiba RAS-25S4KVDG-ND

[MMW-UP0271LQ-E Refrigerant Cycle Diagram](#)

Toshiba MMW-UP0271LQ-E

This manual is also suitable for:

[Ras-10savp-eRas-13savp-eRas-b16skvp-eRas-16savp-eRas-b13skvp-eRas-10skvp-nd](#) ... [Show all](#)