

Indoor Fan Motor Control - Toshiba RAS-B10SKVP-E Service Manual

Split type air conditioner

1
2
3
4
5
6
7
8
9
10
11
12
13
14
15
16
17
18

19
20
21
22
23
24
25
26
27
28
29
30
31
32
33
34
35
36
37
38
39
40
41
42
43
44
45
46
47
48
49
50
51
52
53
54
55
56
57
58
59
60
61
62
63
64
65
66
67
68

69
70
71
72
73
74
75
76
77
78
79
80
81
82
83
84
85
86
87
88
89
90
91
92
93
94
95
96
97
98
99
100
101
102
103
104
105
106
107
108
109
110
111
112
113
114
115
116
117
118



-

-

Troubleshooting

•

Bookmarks



Item

2. Indoor fan

<In cooling operation>

motor control

(This operation controls the fan speed at indoor unit side.)

The indoor fan (cross flow fan) is operated by the phase-control induction motor. The fan rotates in 5 stages in MANUAL mode, and in 5 stages in AUTO mode, respectively.

(Table 1)

COOL ON

Fan speed setup

AUTO

Ta

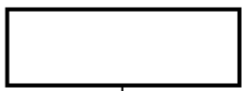
[°C]

+2.5

a

+2.0

b



+1.5
+1.0
c
d
+0.5
e

Tsc
Fan speed
COOL
HEAT
level

WF
UH
WE
H
WD
UH
M+
WC
H
WB
M+
M
WA
W9
M
L+
W8
L
W7
L+
L-
W6
L
W5
L-
UL
W4
UL
W3
SUL
W2
SUL
W1

Operation flow and applicable data, etc.

MANUAL
Indication

L
L+
M
M+
H

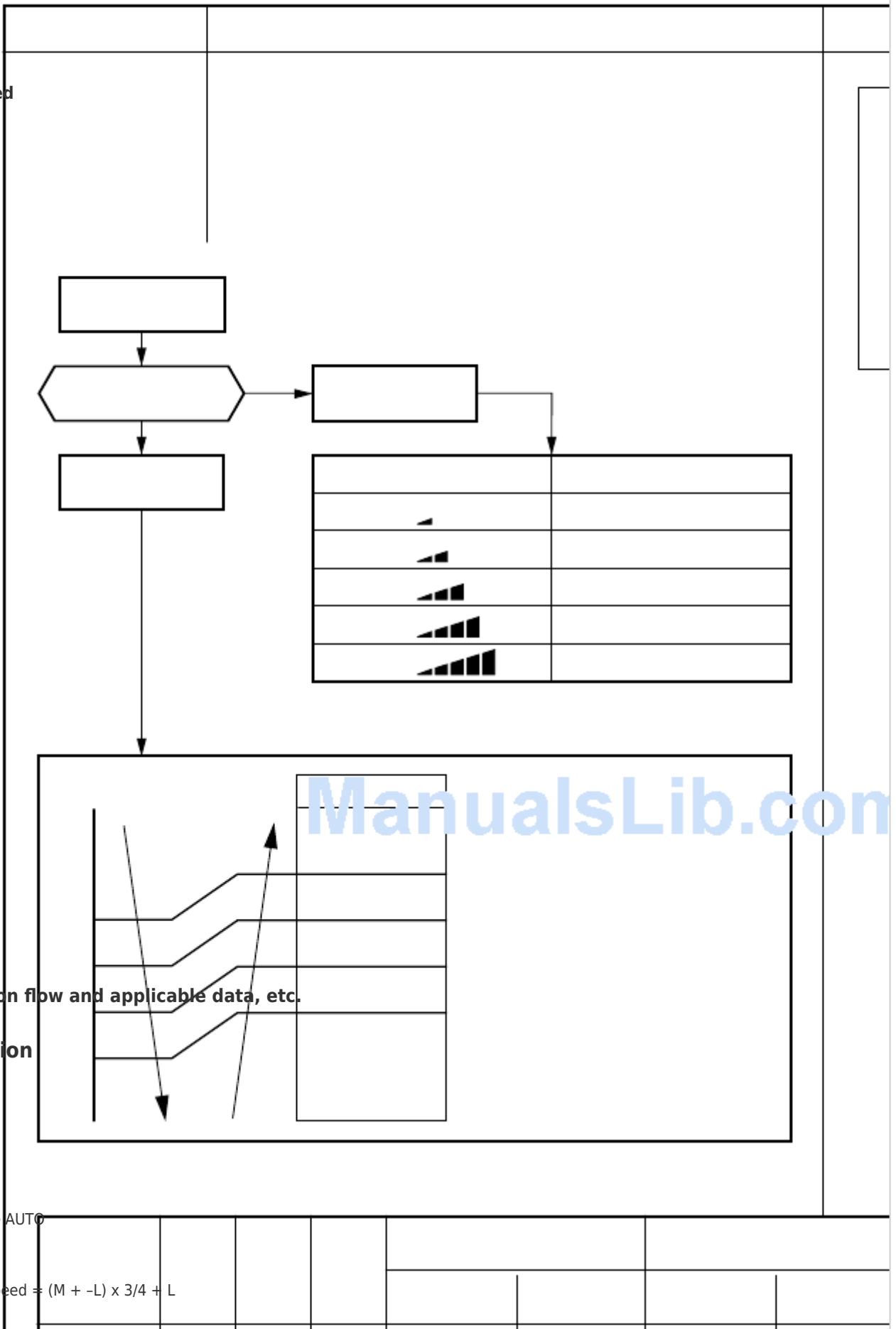
Air volume AUTO

M+(WB)

*3

*3 : Fan speed = (M + -L) x 3/4 + L

*4



*4 : Fan speed = $(M + -L) \times 2/4 + L$

*5

*5 : Fan speed = $(M + -L) \times 1/4 + L$

(Linear approximation

L(W6)

from M+ and L)

(Table 1) Indoor fan air flow rate

RAS-B10SKVP-E

RAS-10SKVP-ND

DRY

Fan speed Air flow rate

(rpm)

(m

1630

1480

1400

1350

1200

1110

980

910

L+

900

L

860

L-

820

UL

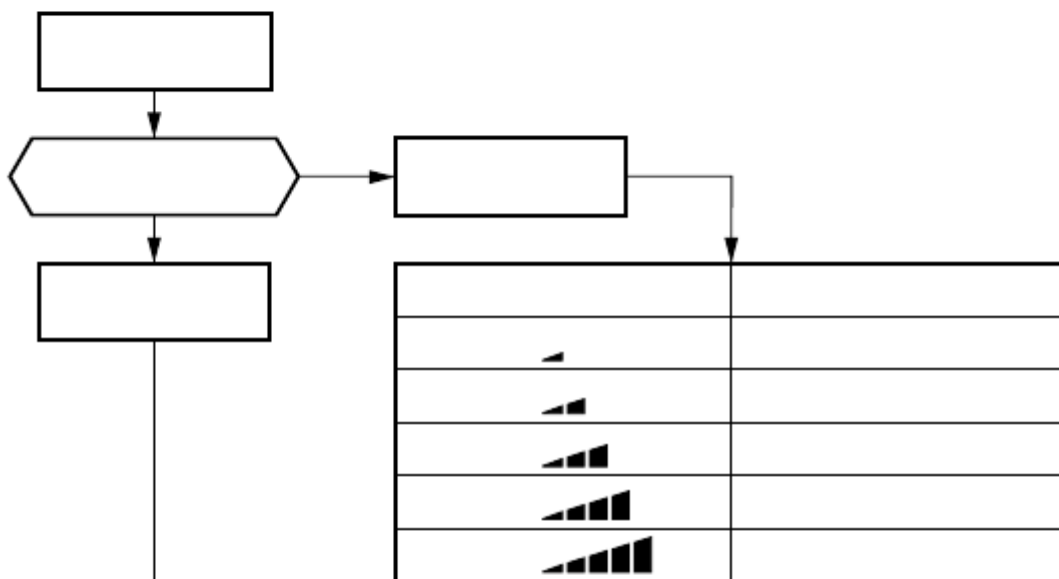
730

SUL

630

600

600



(Fig. 1)

Fan speed

W6

$(L + M) / 2$

W9

$(M + H) / 2$

WC

(Fig. 2)

RAS-B13SKVP-E

RAS-13SKVP-ND

Fan speed Air flow rate

3

/h)

(rpm)

(m

695

1650

615

1530

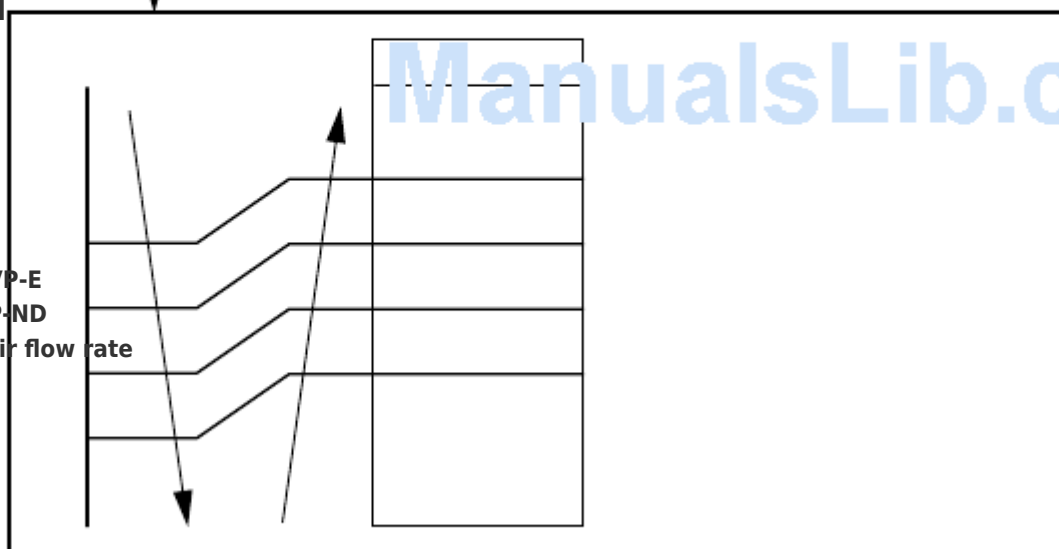
575

1440

550

1390

475



1240
 430
 1150
 365
 1010
 325
 910
 320
 900
 300
 860
 280
 820
 235
 730
 185
 630
 170
 600
 170
 600
 - 31 -

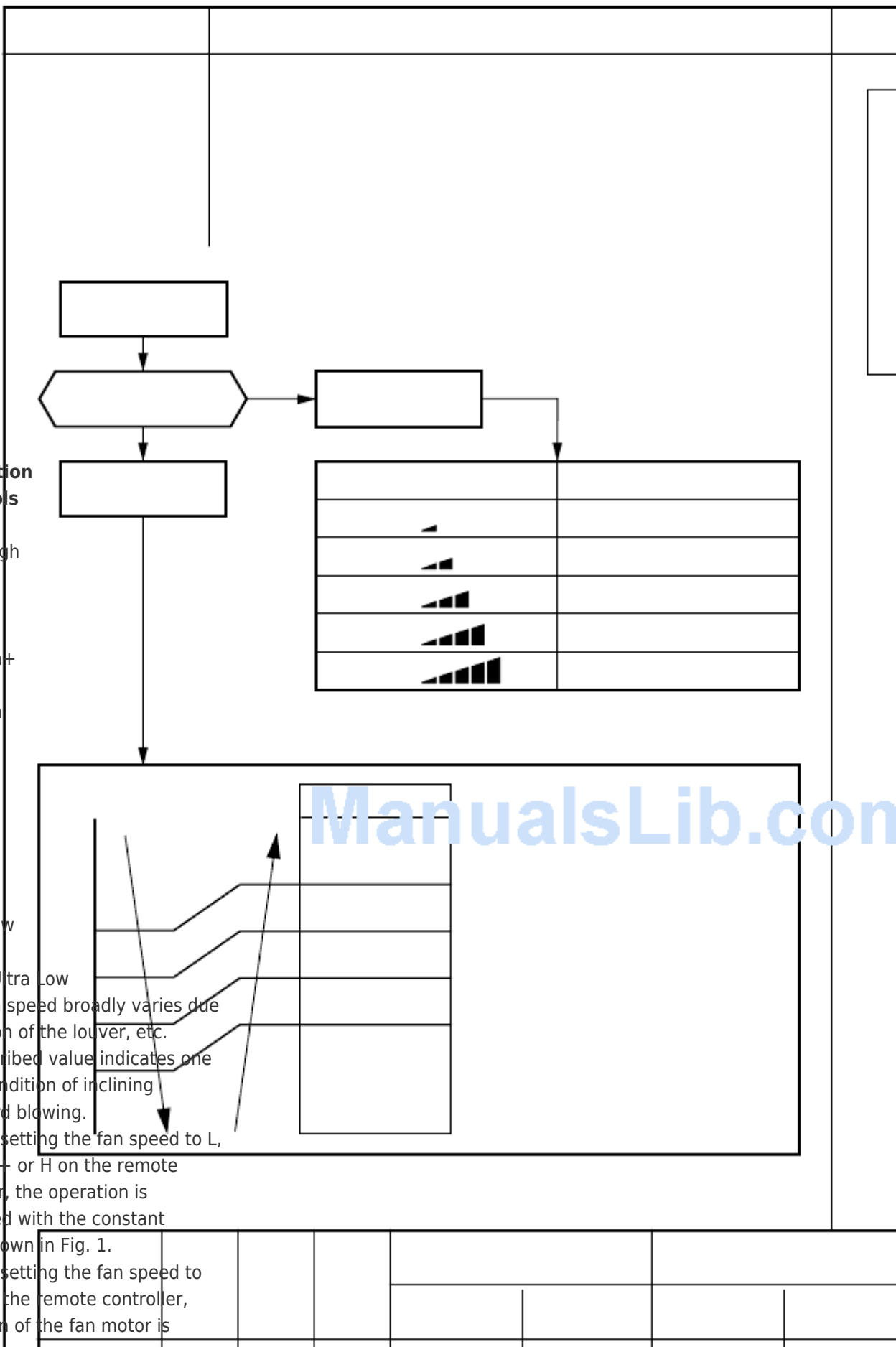
Description
*** Symbols**

- UH : Ultra High
- H : High
- M+ : Medium+
- M : Medium
- L+ : Low+
- L : Low
- L- : Low-
- UL : Ultra Low
- SUL : Super Ultra Low

* The fan speed broadly varies due to position of the louver, etc. The described value indicates one under condition of inclining downward blowing.

1) When setting the fan speed to L, L+, M, M+ or H on the remote controller, the operation is performed with the constant speed shown in Fig. 1.

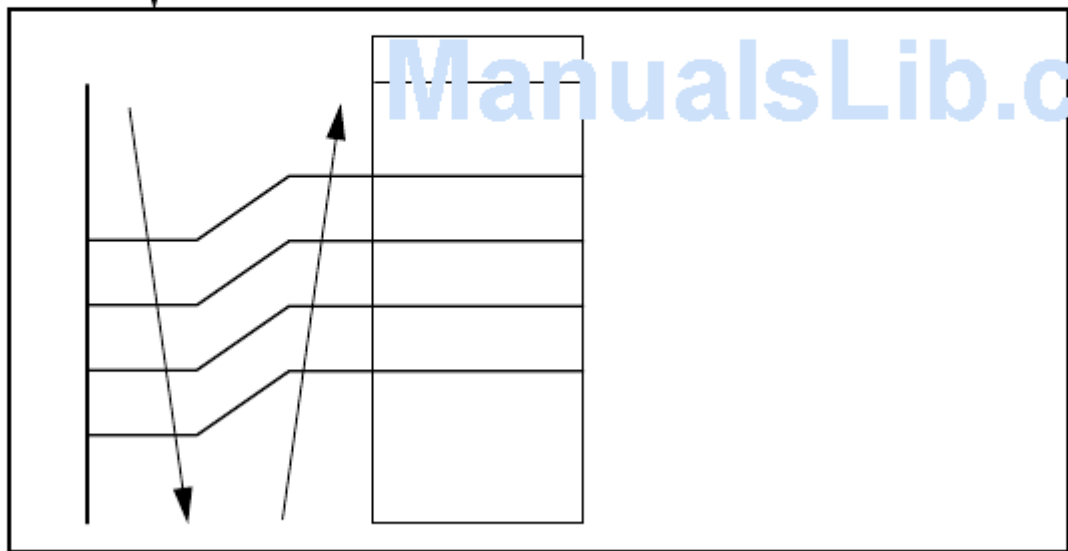
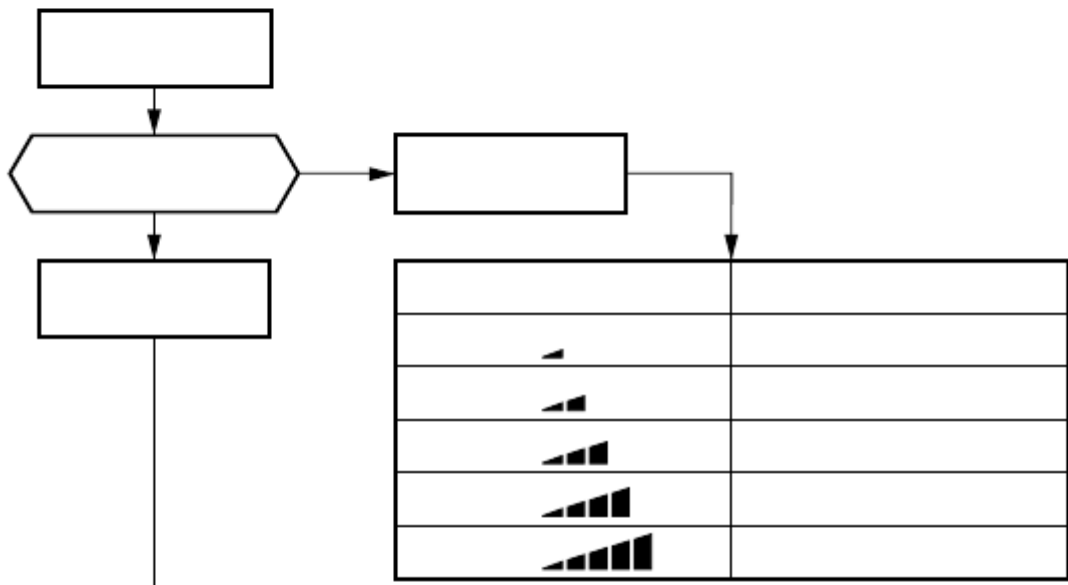
2) When setting the fan speed to AUTO on the remote controller, revolution of the fan motor is



controlled to the fan speed level shown in Fig. 2 and Table 1 according to the setup temperature, room temperature, and heat exchanger temperature.

RAS-B16SKVP-E
RAS-16SKVP-ND
Fan speed Air flow rate

3
/h)
(rpm)
(m
705
1650
640
1580
595
1550
570
1500
495
1350
450
1230
380
1080
325
970
320
960
300
920
280
900
235
790
185
640
170
600
170
600
3
/h)
705
670
650
625
550
490
415
355
350
330
320
265
190
170



[Table of Contents](#)

[Previous Page](#)
[Next Page](#)

1
...
28
29
30
31
32
33
34
35

Quick Links:

[Specifications](#)

[How to Diagnose the Trouble](#)

[How to Replace the Main Parts](#)

[Exploded Views and Parts List](#)

Chapters

[Table of Contents](#) 2

[Operation Description 9-2. 1. Basic Operation](#) 28

Related Manuals for Toshiba RAS-B10SKVP-E

[Air Conditioner Toshiba RAS-B10SKVP-E Installation Manual](#)

(148 pages)

[Air Conditioner Toshiba RAS-4M23SAV-E Service Manual](#)

Split type (121 pages)

[Air Conditioner Toshiba RAS-B10SKVP-E Service Manual](#)

(120 pages)

[Air Conditioner Toshiba RAS-10SAVP-E Service Manual](#)

(119 pages)

[Air Conditioner Toshiba RAS-B10SKVP-E Service Manual](#)

Split type (117 pages)

[Air Conditioner Toshiba RAS-B10SKVP-E Service Manual](#)

(117 pages)

[Air Conditioner Toshiba RAS-B10SKVP-E Owner's Manual](#)

Split type air conditioner (91 pages)

[Air Conditioner Toshiba RAS-B10SKVP-E Owner's Manual](#)

Split type; for general public use (31 pages)

[Air Conditioner Toshiba RAS-B10SKVP-E Owner's Manual](#)

Split type (31 pages)

[Air Conditioner Toshiba RAS-B10SKVP-E Installation Manual](#)

(19 pages)

[Air Conditioner Toshiba RAS-B10SKVP-E Installation Manual](#)

Split type air conditioner (19 pages)

[Air Conditioner Toshiba RAS-16SKVP-ND Owner's Manual](#)

(230 pages)

[Air Conditioner Toshiba RAS-10SKVP-ND Installation Manual](#)

(132 pages)

[Air Conditioner Toshiba RAS-10SKVP-ND Owner's Manual](#)

(61 pages)

[Air Conditioner Toshiba RAS-B10S4KVDG-E Installation Manual](#)

(24 pages)

[Air Conditioner Toshiba RAS-B13S4KVDG-E Service Manual](#)

(149 pages)

Related Content for Toshiba RAS-B10SKVP-E

[RAS-M05G3KVSG-E Indoor Fan Motor Control](#)

Toshiba RAS-M05G3KVSG-E

[RAS-18S3KV-E Indoor Fan Motor Control](#)

Toshiba RAS-18S3KV-E

[RAS-M07G3DV-E Indoor Fan Motor Control](#)

Toshiba RAS-M07G3DV-E

[RAS-M07N4KVRG-E Indoor Fan Motor Control](#)

Toshiba RAS-M07N4KVRG-E

[RAS-25G3KVSG-ND Indoor Fan Motor Control](#)

Toshiba RAS-25G3KVSG-ND

[RAS-25E2KVG-ND Indoor Fan Motor Control](#)

Toshiba RAS-25E2KVG-ND

[RAS-13S3KV-E Indoor Fan Motor Control](#)

Toshiba RAS-13S3KV-E

[RAS-B05BKVG-E Indoor Fan Motor Control](#)

Toshiba RAS-B05BKVG-E

This manual is also suitable for:

[Ras-10savp-eRas-13savp-eRas-b16skvp-eRas-16savp-eRas-b13skvp-eRas-10skvp-nd](#) ... [Show all](#)