

Discharge Temperature Control - Toshiba RAS-B10SKVP-E Service Manual

Split type air conditioner

1
2
3
4
5
6
7
8
9
10
11
12
13
14
15
16
17
18

19
20
21
22
23
24
25
26
27
28
29
30
31
32
33
34
35
36
37
38
39
40
41
42
43
44
45
46
47
48
49
50
51
52
53
54
55
56
57
58
59
60
61
62
63
64
65
66
67
68

69
70
71
72
73
74
75
76
77
78
79
80
81
82
83
84
85
86
87
88
89
90
91
92
93
94
95
96
97
98
99
100
101
102
103
104
105
106
107
108
109
110
111
112
113
114
115
116
117
118



-

-

Troubleshooting

•

Bookmarks



Item

Operation flow and applicable data, etc.

12. Air purifying control [Detection of abnormality]

Air purifying operation

PURE lamp ON

Air purifier power ON *

Air purifier 12. Air purifying control [Detection of abnormality]

YES

power estimates

Error input is detected

Filter lamp (1Hz) ON

Air purifier power OFF

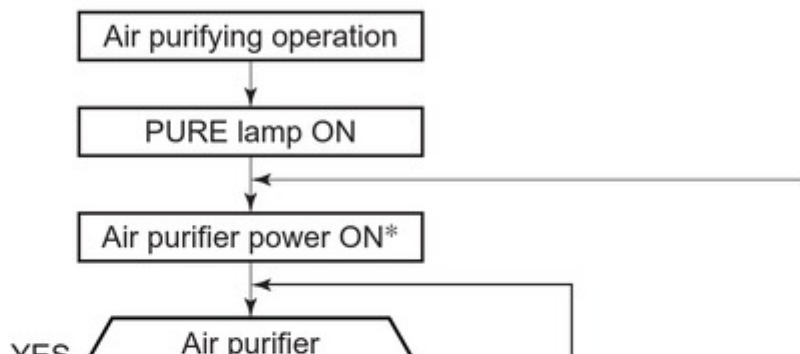
Error input

was detected by

5 times or more

YES

Air purifier power OFF



1. Purpose

The air purifier alerts the user of an abnormality in air purifying operation.

2. Description

Trouble is detected (indicated by the following four conditions).

- 1) When a certain time has reached
- 2) When the

Filter lamp (1Hz) ON

1

Q

Reset by RESET button.

R

Reset by RESET button or by the stop direction from the remote controller.

* When the breaker is turned [ON] or RESET button is pushed while the FILTER indicator is turned on, the air purifier is not turned on until the integrated operation time of the indoor fan exceeds 1 hour after operation start. It is the safety measures considering an incomplete drain when electric dust collector has been cleaned with water.

13. Discharge temperature control

Td value

Judges as an error and stops the compressor.

117°C

Reduce the compressor speed.

112°C

Reduce slowly compressor speed.

108°C

Keeps the compressor speed.

105°C

If the operation is performed with lower speed than

one commanded by the serial signal, speed is slowly

raised up to the commanded speed.

98°C

Operates with speed commanded by the serial signal.

1000H

NO

NO

YES

NO

Approx. 10 minutes

passed from the error input

was detected.

YES

2

Control operation

1. Purpose

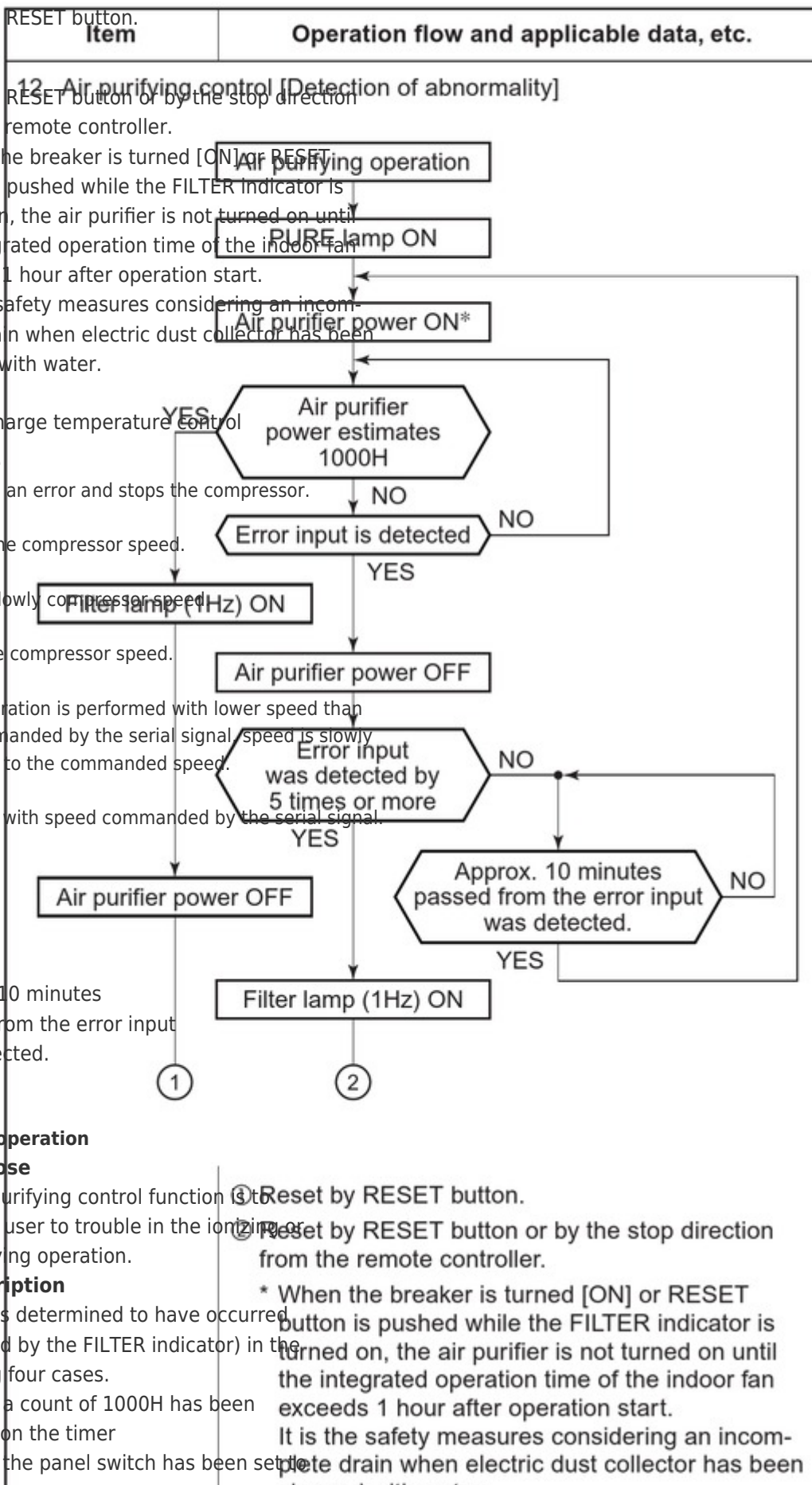
The air purifying control function is to alert the user to trouble in the ionizing or air purifying operation.

2. Description

Trouble is determined to have occurred (indicated by the FILTER indicator) in the following four cases.

1) When a count of 1000H has been reached on the timer

2) When the panel switch has been set to



① Reset by RESET button.

② Reset by RESET button or by the stop direction from the remote controller.

* When the breaker is turned [ON] or RESET button is pushed while the FILTER indicator is turned on, the air purifier is not turned on until the integrated operation time of the indoor fan exceeds 1 hour after operation start. It is the safety measures considering an incomplete drain when electric dust collector has been cleaned with water.

1. Purpose

The air purifier alert the user to trouble in the air purifying operation.

2. Description

Trouble is determined to have occurred (indicated by the FILTER indicator) in the following four cases.

- 1) When a count of 1000H has been reached on the timer
- 2) When the panel switch has been set to the stop direction
- 3) When an error input is detected by a symptom such as the FILTER indicator is turned on
- 4) When the error input is detected and not been cleared

* Trouble is determined to have occurred (indicated by the FILTER indicator) in the following four cases.

3. Operation

The sequence of operations is shown in the flowchart.

- 1) When 10 minutes has passed from the error input was detected, the FILTER indicator is turned on. The timer is cleared and the indoor fan is started (FILTER indicator is turned off).
- 2) If the air purifier is stopped, the error input is cleared. If the air purifier is started, the error input is not cleared. If the air purifier is stopped, the error input is cleared. If the air purifier is started, the error input is not cleared. If the air purifier is stopped, the error input is cleared. If the air purifier is started, the error input is not cleared.

OFF by the opening of the air inlet grille, etc.

3) When an abnormal discharge caused by a symptom such as the build-up of dirt has been detected while the air purifier is ON

4) When the electric dust collector has not been installed correctly

* Trouble case (2) or (3) is deemed to

3. Operation

The sequence that FILTER indicator is turned on are described in the left flowchart.

1) When 1000H timer counts up, the FILTER indicator keeps lighting even if the operation is stopped by the remote controller.

The timer is stored in memory of the microcomputer, and the operation time is cleared by filter RESET button on the indoor unit.

(FILTER indicator goes off.)

2) If the air purifying error input was detected by 5 times or under, turn on the purifier again approx. 10 minutes after and judge it again.

If the air purifying error input was detected by 5 times or more, determine the error and turn on the Filter lamp.

1. Purpose

This function detects error on the refrigerating cycle or error on the compressor, and performs protective control.

2. Operation

• Control of the compressor speed
The speed control is performed as described in the left table based upon the discharge temperature.

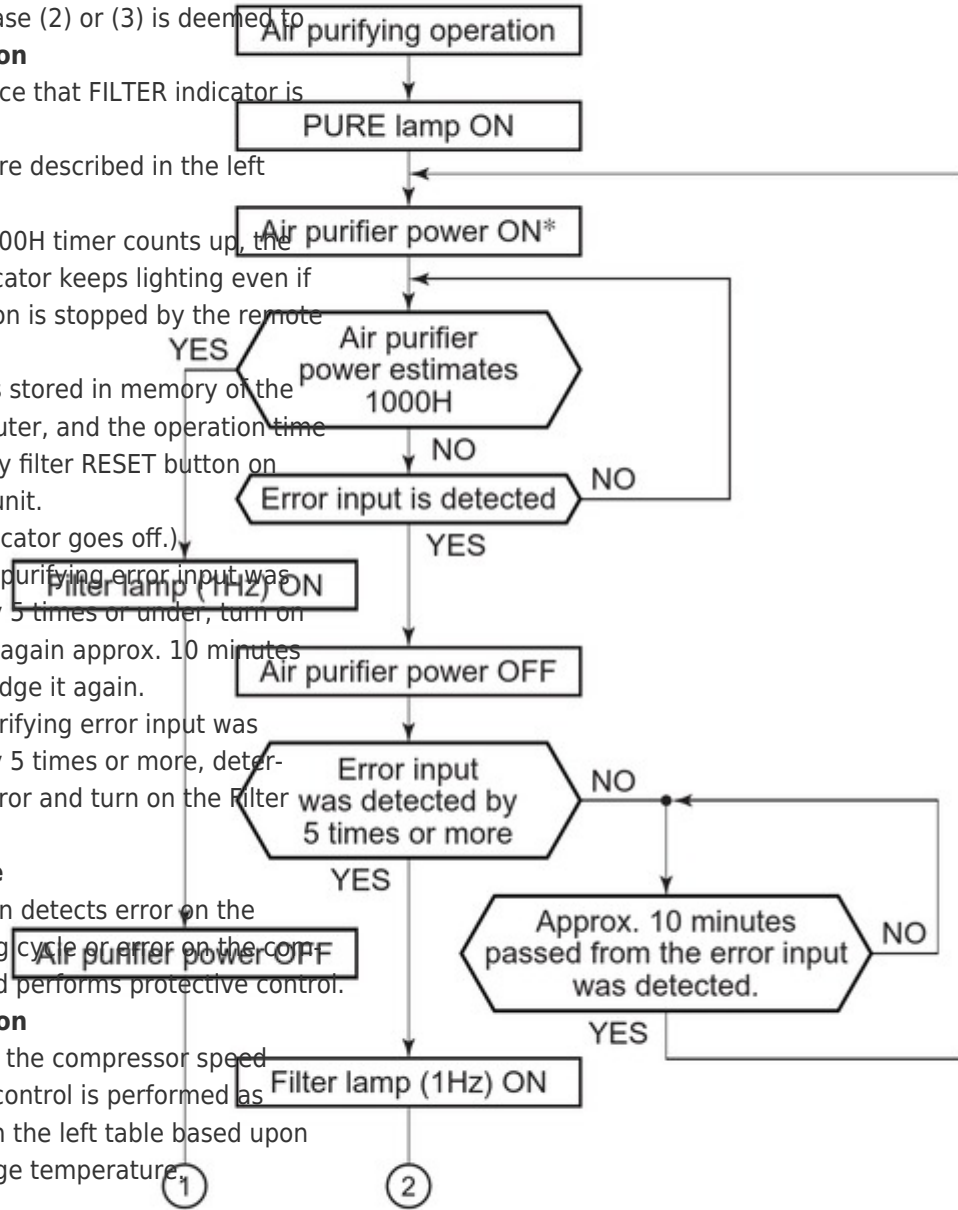
- 40 -

Description

have occurred when the action concerned continues for more than one second.

Operation flow and applicable data, etc.

12. Air purifying control [Detection of abnormality]



- ① Reset by RESET button.
- ② Reset by RESET button or by the stop direction

1. Purpose

The air purifier alert the user air purifying

2. Description

Trouble is detected (indicated by following four

- 1) When a... reached
- 2) When the... OFF by the grille, etc.
- 3) When an... by a sym... dirt has b... purifier is
- 4) When the... not been

* Trouble have occurred concern one second

3. Operation

The sequence turned on are described in the flowchart.

- 1) When 10... FILTER in... the opera... controller... The timer... microcom... is cleared... the indoor... (FILTER i
- 2) If the air... detected

[Previous Page](#)
[Next Page](#)

1
...
37
38
39
40
41
42
43
44

Quick Links:

[Specifications](#)

[How to Diagnose the Trouble](#)

[How to Replace the Main Parts](#)

[Exploded Views and Parts List](#)

Chapters

[Table of Contents](#) 2

[Operation Description 9-2. 1. Basic Operation](#) 28

Related Manuals for Toshiba RAS-B10SKVP-E

[Air Conditioner Toshiba RAS-B10SKVP-E Installation Manual](#)

(148 pages)

[Air Conditioner Toshiba RAS-4M23SAV-E Service Manual](#)

Split type (121 pages)

[Air Conditioner Toshiba RAS-B10SKVP-E Service Manual](#)

(120 pages)

[Air Conditioner Toshiba RAS-10SAVP-E Service Manual](#)

(119 pages)

[Air Conditioner Toshiba RAS-B10SKVP-E Service Manual](#)

Split type (117 pages)

[Air Conditioner Toshiba RAS-B10SKVP-E Service Manual](#)

(117 pages)

[Air Conditioner Toshiba RAS-B10SKVP-E Owner's Manual](#)

Split type air conditioner (91 pages)

[Air Conditioner Toshiba RAS-B10SKVP-E Owner's Manual](#)

Split type; for general public use (31 pages)

[Air Conditioner Toshiba RAS-B10SKVP-E Owner's Manual](#)

Split type (31 pages)

[Air Conditioner Toshiba RAS-B10SKVP-E Installation Manual](#)

(19 pages)

[Air Conditioner Toshiba RAS-B10SKVP-E Installation Manual](#)

Split type air conditioner (19 pages)

[Air Conditioner Toshiba RAS-16SKVP-ND Owner's Manual](#)

(230 pages)

[Air Conditioner Toshiba RAS-10SKVP-ND Installation Manual](#)

(132 pages)

[Air Conditioner Toshiba RAS-10SKVP-ND Owner's Manual](#)

(61 pages)

[Air Conditioner Toshiba RAS-B10S4KVDG-E Installation Manual](#)

(24 pages)

[Air Conditioner Toshiba RAS-B13S4KVDG-E Service Manual](#)

(149 pages)

Related Content for Toshiba RAS-B10SKVP-E

[RAS-25S4KVDG-ND Discharge Temperature Control](#)

Toshiba RAS-25S4KVDG-ND

[RAS-B22PKVSG-TR Discharge Temperature Control](#)

Toshiba RAS-B22PKVSG-TR

[RAS-25S4KVPG-ND Discharge Temperature Control](#)

Toshiba RAS-25S4KVPG-ND

[RAS-10S3AV-E Discharge Temperature Control](#)

Toshiba RAS-10S3AV-E

[RAS-18S3KV-E Discharge Temperature Control](#)

Toshiba RAS-18S3KV-E

[RAS-5M34U2AVG-E Discharge Temperature Control](#)

Toshiba RAS-5M34U2AVG-E

[RAS-25G3KVSG-ND Discharge Temperature Control](#)

Toshiba RAS-25G3KVSG-ND

[RAS-25E2KVG-ND Discharge Temperature Control](#)

Toshiba RAS-25E2KVG-ND

This manual is also suitable for:

[Ras-10savp-eRas-13savp-eRas-b16skvp-eRas-16savp-eRas-b13skvp-eRas-10skvp-nd](#) ... [Show all](#)