

Settings Menu - Toshiba □TDP-MT8 User Manual

Home cinema dlp technology

1
Table Of Contents
2
3
4
5
6
7
8
9
10
11
12
13
14
15
16
17

18
19
20
21
22
23
24
25
26
27
28
29
30
31
32
33
34
35
36
37
38
39
40
41
42

--

•

[Table of Contents](#)

-

Troubleshooting

•

Bookmarks



Settings menu

DOORZV IRX WR DIVLW D SDUWL XODU LOSXW WR DVSH QE VRXUJ NHUQ November 22, 2002 9:09 AM

Sources

WKH UHPRWH DOG HQDEOHV RU GLVDEOHV \$XWRVRXU.H :KHQ \$XWRVRXU.H LV QRW
 .KH.NHG W\ SURMH.WRU GHDXQVW WR WKH ODVW XVHG VRXU.H JI QR VRXU.H LV IRXQG
 D EODQN V.UHHQ GLVDEOHV SURMH.WRU LV .KH.NHG WKH SURMH.WRU .KH.NV

Sources
 Settings menu

WKH ODVW XVHG VRXU.H is checked and becomes the default source. When Autosource is not checked, the projector defaults to the first-used source. If no source is found, a blank screen displays. When Autosource is checked, the projector checks the sources in order until a source is found or until power down.

System

\$OO RSWLRQV LQ WKLV PHQX WRJ\OH EHWZHHQ RQ DOG RIJ

Source Enable

Source 1

Rear: UHYHUVHV WKH LPDJH VR IRX.DQ SURMH.W IURP EHKLOG D WUDQVX.HQW V.UHHQ

Ceiling: WXUQV WKH LPDJH XSVLGH GRZQ IRU .HLOLQ\PRXQWHG SURMH.WLRQ

NOTE: W LV UH.RPPH\YHUVW DOO ILQDO LPDJH DGMXVWPHQWV LQ &HLOLQJ PRGH

DUH PDGH RQ.H WKH XQLW KDV IXOO ZDUPHG XS DSSUR\LPDWHO\ PLOXWHV

Auto Power: KHQ \$XWR SRZHU LV KH.NHG WKH SURMH.WRU DXWRPDVW DOO

JRHV LQWR WKH VWDUWXS VWDWH DIWHU WKH SURMH.WRU UH.HLYHV SRZHU 7KLV DOORZV

.RQWURO RI .HLOLQJ PRGH SURMH.WRU SRZHU 7KLV DOORZV

System menu

Display Messages: GLVSOD\ VVDWXV PHVVDJHV VX.K DV 'HNDU.KLQJ LQ WKH

ORZHU\OHW .RUOHU RQ.HLOLQJ

High Power: 7XUQ WKLV RQ WR LQ.UHDVH WKH OLJKW RXWSXW RI WKH ODPS 7KLV DOVR

VKRUWHQV ODPS OLIH DOG LQ.UHDVH IDQ OQLVH

28

Sources: allows you to assign a particular input to a specific source key on the remote control or disable Autosource. When Autosource is not checked, the projector defaults to the first-used source. If no source is found, a blank screen displays. When Autosource is checked, the projector checks the sources in order until a source is found or until power down.

Source Enable: You can use the Source Enable feature to eliminate certain sources from this search, which will speed the search. By default, the check boxes for all sources are checked. Uncheck a source's box to eliminate it from the search.

System: All options in this menu toggle between on and off.

Rear: Rear: turns the image up for you can project from behind a translucent screen.

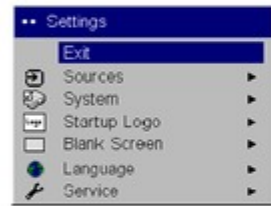
Ceiling: Ceiling turns the image upside down for ceiling-mounted projection.

NOTE: It is recommended that all final image adjustments in Ceiling mode are made once the unit has fully warmed up (approximately 20 minutes).

Auto Power: When Auto Power is checked, the projector automatically goes into the startup state after the projector receives power. This allows control of ceiling mounted projectors with a wall power switch.

Display Messages: displays status messages (such as "Searching") in the lower-left corner of the screen.

High Power: Turn this on to increase the light output of the lamp. This also shortens lamp life and increases fan noise.



Settings menu



Source 1



System

[Previous Page](#)
[Next Page](#)

1
...
25
26
27
28
29
30
31
32

Related Manuals for Toshiba □TDP-MT8

[Projector Toshiba TDP-MT8 Service Manual](#)

(97 pages)

[Projector Toshiba TDPMT8U User Manual](#)

Owners manual (42 pages)

[Projector Toshiba TDP-MT200 Owner's Manual](#)

Toshiba dlp projector owner's manual tdp-mt200 (44 pages)

[Projector Toshiba TDP- T80 Service Manual](#)

(93 pages)

[Projector Toshiba TDP-MT500 Owner's Manual](#)

Toshiba projector tdp-mt500 owner's manual (42 pages)

[Projector Toshiba TDP-MT500 Owner's Manual](#)

Home projector (40 pages)

[Projector Toshiba TDP-MT8U Specifications](#)

Digital light processing projector (2 pages)

[Projector Toshiba TDP TDP-MT700 Owner's Manual](#)

Toshiba owner's manual video projector tdp-mt700 (34 pages)

[Projector TOSHIBA TDP-MT700 Owner's Manual](#)

Home theater projector (36 pages)

[Projector Toshiba TDP-MT700 Service Manual](#)

(49 pages)

[Projector Toshiba mt200 Technical Data](#)

Contrast 2,500 : 1 true 16 : 9 wide screen truevision de-interlacing (2 pages)

[Projector Toshiba TDP MT200 Specifications](#)

Dlp projector (2 pages)

[Projector Toshiba TDP MT700 Specifications](#)

Hd dlp home theater projector (2 pages)

[Projector Toshiba TDP-MT5 User Manual](#)

(78 pages)

[Projector Toshiba TDP-S3 Service Manual](#)

(108 pages)

[Projector Toshiba Projector Manual](#)

(43 pages)

Related Content for Toshiba □TDP-MT8

[TLP680U Settings And Adjustments On The Menu](#)

Toshiba TLP680U

[TLP380 Guide Menu Adjustments And Settings](#)

Toshiba TLP380

[TLP251 Guide Menu Adjustments And Settings](#)

Toshiba TLP251

[TLP-X10U Adjustments And Settings On The Menu Screen](#)

Toshiba TLP-X10U

[TDP-P6 Settings Menu](#)

Toshiba TDP-P6

[TLP-261 Guide Menu Adjustments And Settings](#)

Toshiba TLP-261

[TLP-X10E Adjustments And Settings On The Menu Screen](#)

Toshiba TLP-X10E

[TDP-TW350 The Image Adjustment Menu](#)

Toshiba TDP-TW350