

Refrigerant Cycle Diagram - Toshiba RAS-13SKV-E Service Manual

Indoor/outdoor unit, split type air conditioner

1
2
3
4
5
6
7
8
9
10
11
12
13
14
15
16
17
18

19
20
21
22
23
24
25
26
27
28
29
30
31
32
33
34
35
36
37
38
39
40
41
42
43
44
45
46
47
48
49
50
51
52
53
54
55
56
57
58
59
60
61
62
63
64
65
66
67
68

69
70
71
72
73
74
75
76
77
78
79
80
81
82
83
84
85
86
87
88
89
90
91
92
93
94
95
96
97
98
99
100
101
102
103
104
105
106
107
108
109
110
111
112
113
114
115
116
117
118

119

120



•

[Table of Contents](#)

-

Troubleshooting

•

Bookmarks



7-1. Refrigerant Cycle Diagram

RAS-10SKVR-E / RAS-10SAVR-E

RAS-13SKV-E / RAS-13SAV-E

P

Pressure measurement

Gauge attaching port

Vacuum pump connecting port

Deoxidized copper pipe

Outer dia. : 9.52mm

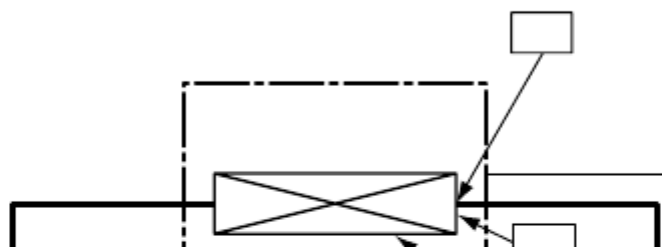
Thickness : 0.8mm

4-way valve

(STF-0108Z)

TS

Temp. measurement



NOTE :

- The maximum pipe length of this air conditioner is 20 m. When the pipe length exceeds 15m, the additional charging of refrigerant, 20g per 1m for the part of pipe exceeded 15m is required. (Max. 100g)

7. REFRIGERANT CYCLE DIAGRAM

INDOOR UNIT

- Indoor heat exchanger
- Cross flow fan
- Deoxidized copper pipe
- Outer dia. : 6.35mm
- Thickness : 0.8mm
- Sectional shape of heat insulator
- Muffler
- Muffler
- TD
- Compressor
- DA89X1C-23FZ
- Outdoor heat exchanger
- T2
- Propeller fan

OUTDOOR UNIT

- Temp. measurement
- T1
- TC
- TA
- TO
- TE

NOTE:

- 21
- Max.
- Min.
- Chargeless : 15m
- Charge : 20g/m (16 to 20m)
- Strainer
- Pulse Modulating valve at liquid side (SEV16RC9)
- Strainer
- Refrigerant amount : 0.80kg
- Gas leak check position
- Refrigerant flow (Cooling)
- Refrigerant flow (Heating)
- : 20m
- : 1m

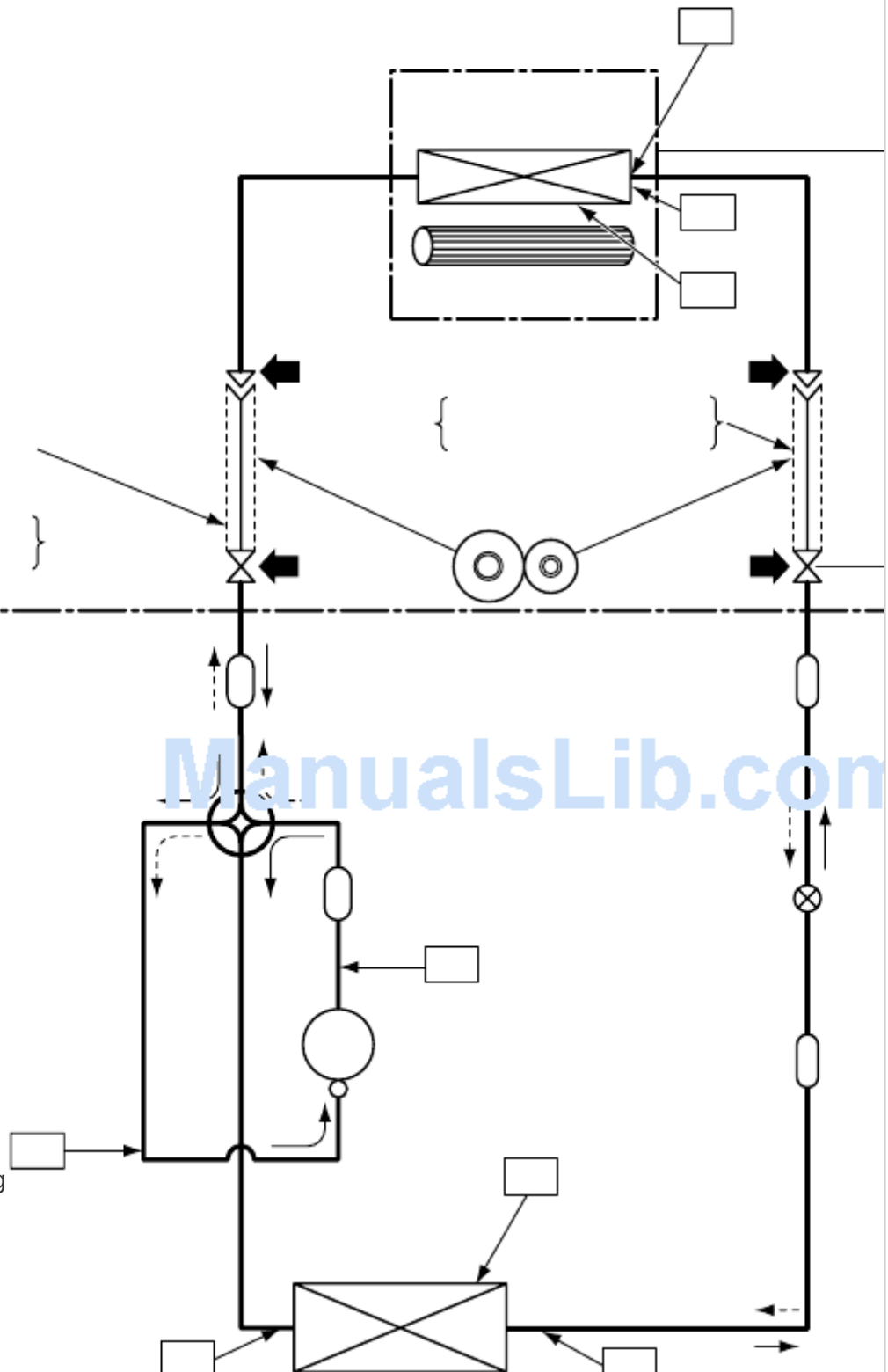


Table of Contents

[Previous Page](#)
[Next Page](#)

1
...
18
19
20
21
22
23
24
25

Quick Links:

[Service Manual](#)

[Specifications](#)

[How to Diagnose the Trouble](#)

Chapters

[Service Manual 2](#)

[Auto Restart Function/Remote Controller and Its Functions 31](#)

Related Manuals for Toshiba RAS-13SKV-E

[Air Conditioner Toshiba RAS-13SKV-E Service Manual](#)

Split type indoor/outdoor unit (121 pages)

[Air Conditioner Toshiba RAS-B10SKVP-E Service Manual](#)
Split type air conditioner (119 pages)

[Air Conditioner Toshiba RAS-B10SKVP-E Owner's Manual](#)
Split type air conditioner (91 pages)

[Air Conditioner Toshiba RAS-B10SKVP-E Installation Manual](#)
(19 pages)

[Air Conditioner Toshiba RAS-B10SKVP-E Installation Manual](#)
(148 pages)

[Air Conditioner Toshiba RAS-B10SKVP-E Service Manual](#)
(120 pages)

[Air Conditioner Toshiba RAS-16SKVP-ND Owner's Manual](#)
(230 pages)

[Air Conditioner Toshiba RAS-10 SKV Series Owner's Manual](#)
(8 pages)

[Air Conditioner Toshiba RAS-10 SKV Series Owner's Manual](#)
Air conditioner (split type) (4 pages)

[Air Conditioner Toshiba RAS-13SKHP-E Service Manual](#)
Split wall type air conditioner (70 pages)

[Air Conditioner Toshiba RAS-10SKH-ES Service Manual](#)
Split wall type (68 pages)

[Air Conditioner Toshiba RAS-B10 Series Installation Manual](#)
(68 pages)

[Air Conditioner Toshiba RAS-10S3KV-E Owner's Manual](#)
(7 pages)

[Air Conditioner Toshiba RAS-13S3KV-E Service Manual](#)
(108 pages)

[Air Conditioner Toshiba RAS-24S3KHS-EE Owner's Manual](#)
(8 pages)

[Air Conditioner Toshiba RAS-10SKP Series Owner's Manual](#)
(8 pages)

Related Content for Toshiba RAS-13SKV-E

[Carrier TCB-IFDMR01UP-UL Refrigerant Cycle Diagram](#)
Toshiba Carrier TCB-IFDMR01UP-UL

[MMD-UP0721HFP-UL Refrigerant Cycle Diagram](#)
Toshiba MMD-UP0721HFP-UL

[RAS-24J2KVG-UA Refrigerant Cycle Diagram](#)
Toshiba RAS-24J2KVG-UA

[MMD-UP0481HFP-UL Refrigerant Cycle Diagram](#)
Toshiba MMD-UP0481HFP-UL

[MMD-UP0721HFP Series Refrigerant Cycle Diagram](#)
Toshiba MMD-UP0721HFP Series

[RAS-B07G3KVSG-E Refrigerant Cycle Diagram](#)
Toshiba RAS-B07G3KVSG-E

[RAS-25S4KVDG-ND Refrigerant Cycle Diagram](#)

Toshiba RAS-25S4KVDG-ND

[MMW-UP0271LQ-E Refrigerant Cycle Diagram](#)

Toshiba MMW-UP0271LQ-E

This manual is also suitable for:

[Ras-13sav-eRas-16skv-eRas-10savr-eRas-13skvr-eRas-13savr-eRas-16sav-e](#) ... [Show all](#)