

Discharge Temperature Control - Toshiba RAS-13SKV-E Service Manual

Indoor/outdoor unit, split type air conditioner

1
2
3
4
5
6
7
8
9
10
11
12
13
14
15
16
17
18

19
20
21
22
23
24
25
26
27
28
29
30
31
32
33
34
35
36
37
38
39
40
41
42
43
44
45
46
47
48
49
50
51
52
53
54
55
56
57
58
59
60
61
62
63
64
65
66
67
68

69
70
71
72
73
74
75
76
77
78
79
80
81
82
83
84
85
86
87
88
89
90
91
92
93
94
95
96
97
98
99
100
101
102
103
104
105
106
107
108
109
110
111
112
113
114
115
116
117
118

119

120



•

[Table of Contents](#)

-

Troubleshooting

•

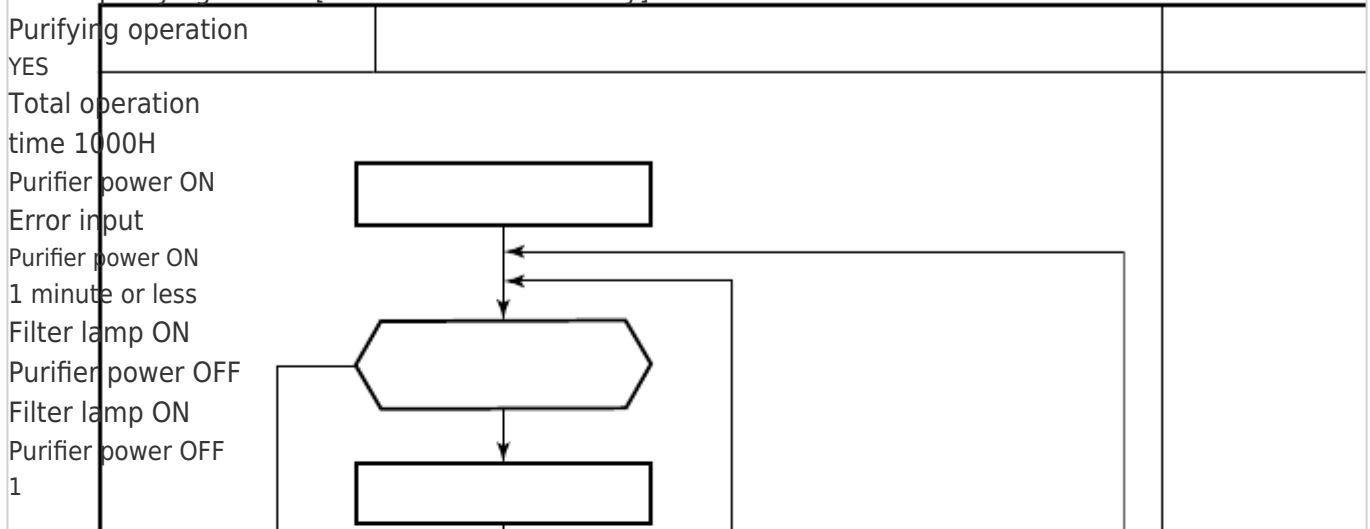
Bookmarks



Item

Operation flow and applicable data, etc.

11. Air purifying control [Detection of abnormality]



1

Reset by RESET button.

2

Reset by RESET button or by the stop direction from the remote controller.

* When the breaker is turned [ON] (In restart time)

12. Discharge temperature control

Td value

Judges as an error and stops the compressor.

117°C

Reduce the compressor speed.

112°C

Reduce slowly compressor speed.

108°C

Keeps the compressor speed.

105°C

If the operation is performed with lower speed than one commanded by the serial signal, speed is slowly raised up to the commanded speed.

98°C

Operates with speed commanded by the serial signal.

NO

NO

YES

NO

Filter lamp-OFF continues.

YES

Purifier power OFF

Purifier power ON

after 10 minutes

from the error input.

Error input 5 times

Purifier power OFF

after power failure) or RESET button is pressed while the FILTER indicator is turned on, the air purifier is not turned on until the integrated operation time of the indoor fan exceeds 1 hour after operation start (It is not the air purifier operation time).

It is the safety measures considering an incomplete drain when electric dust collector has been cleaned with water.

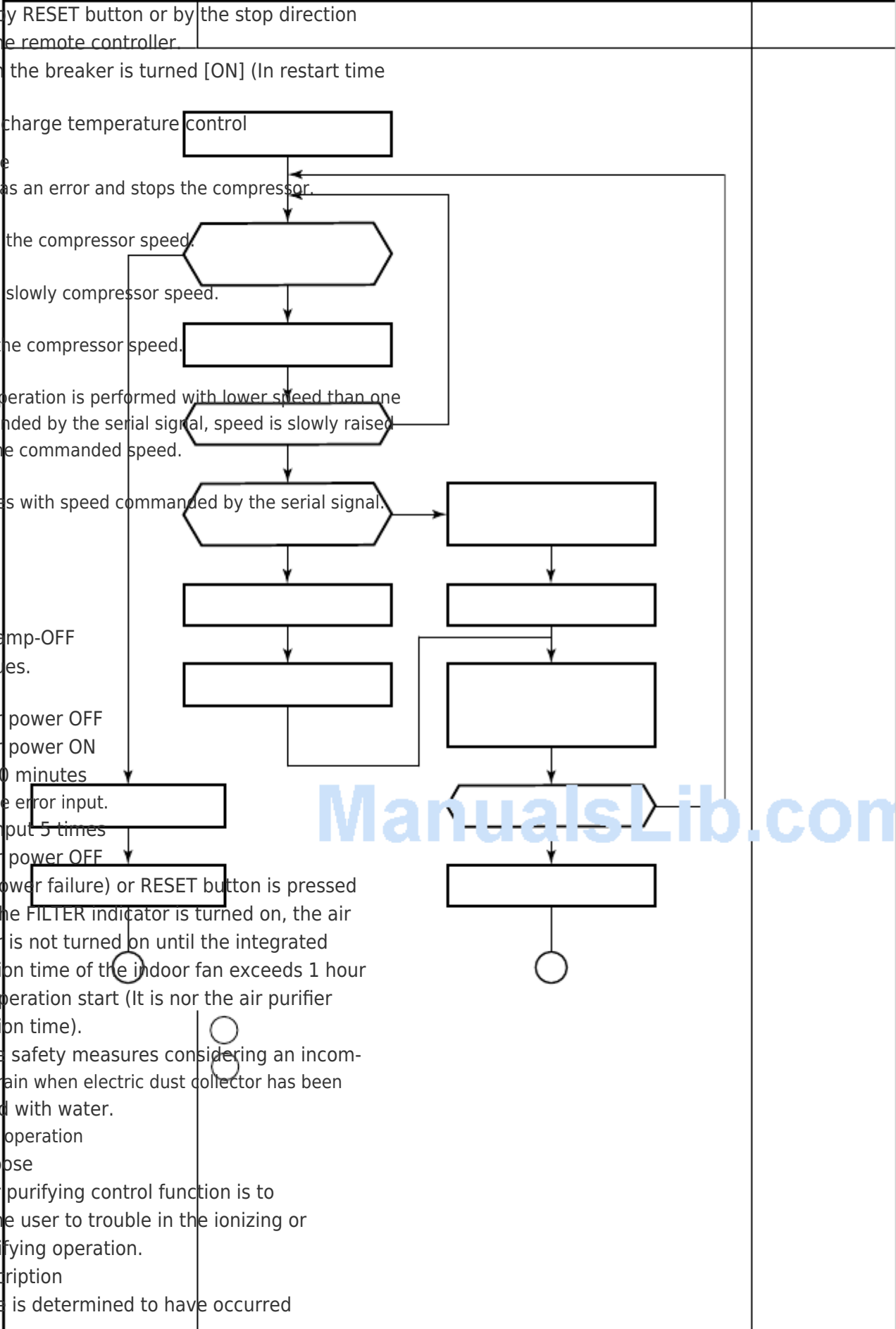
Control operation

1. Purpose

The air purifying control function is to alert the user to trouble in the ionizing or air purifying operation.

2. Description

Trouble is determined to have occurred



ManualsLib.com

(indicated by the FILTER indicator) in the following four cases.

- 1) When a count of 1000H has been
- 2) When the panel switch has been set to
- 3) When an abnormal discharge caused
- 4) When the electric dust collector has

3. Operation

The sequence that FILTER indicator is turned on are described in the left flowchart.

YES

- 1) When 1000H timer counts up, the
- 2
- 2) A trouble detected within 1 minute
- 3) In case that 1 minute passed after

1. Purpose

This function detects error on the refrigerating cycle or error on the compressor, and performs protective control.

2. Operation

- Control of the compressor speed
- 43 -

Description

reached on the timer
 OFF by the opening of the air inlet grille, etc.
 by a symptom such as the build-up of dirt has been detected while the air purifier is ON

not been installed correctly

* Trouble case (2) or (3) is deemed to have occurred when the action concerned continues for more than one second.

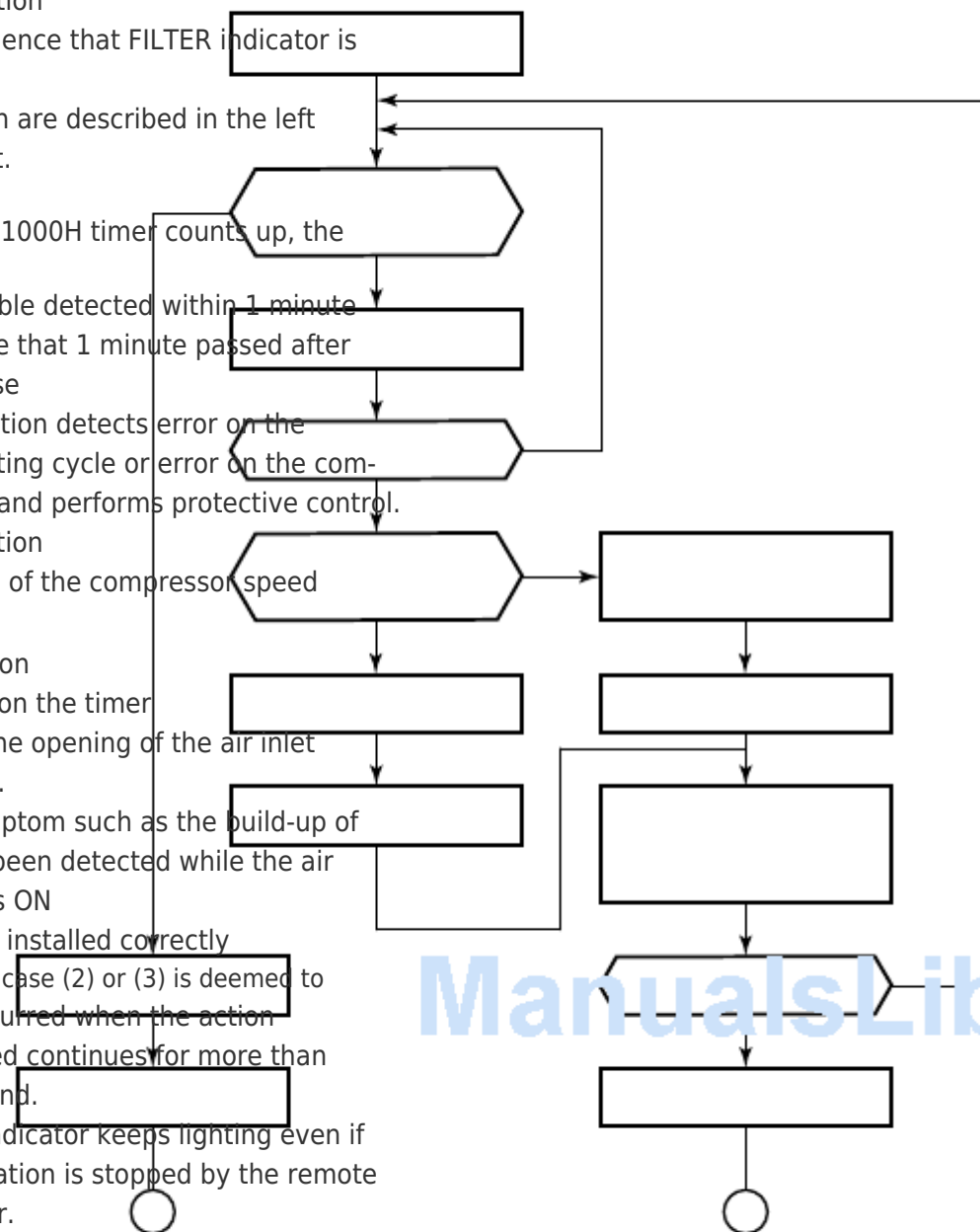
FILTER indicator keeps lighting even if the operation is stopped by the remote controller.

The timer is stored in memory of the microcomputer, and the operation time is cleared by filter RESET button on the indoor unit or a power failure.

(FILTER indicator goes off.)

after activation of the air is immediately judged as an error and the FILTER indicator goes on.

activation of the purifier, the purifier is turned off while the PURE indicator keeps ON. After 10 minutes passed, restart the purifier and an error is



judged again.

The speed control is performed as described in the left table based upon the discharge temperature.

[Table of Contents](#)

[Previous Page](#)
[Next Page](#)

1
...
40
41
42
43
44
45
46
47

Quick Links:

[Service Manual](#)

[Specifications](#)

[How to Diagnose the Trouble](#)

Chapters

[Service Manual 2](#)

[Auto Restart Function/Remote Controller and Its Functions 31](#)

Related Manuals for Toshiba RAS-13SKV-E

[Air Conditioner Toshiba RAS-13SKV-E Service Manual](#)

Split type indoor/outdoor unit (121 pages)

[Air Conditioner Toshiba RAS-B10SKVP-E Service Manual](#)

Split type air conditioner (119 pages)

[Air Conditioner Toshiba RAS-B10SKVP-E Owner's Manual](#)

Split type air conditioner (91 pages)

[Air Conditioner Toshiba RAS-B10SKVP-E Installation Manual](#)

(19 pages)

[Air Conditioner Toshiba RAS-B10SKVP-E Installation Manual](#)

(148 pages)

[Air Conditioner Toshiba RAS-B10SKVP-E Service Manual](#)

(120 pages)

[Air Conditioner Toshiba RAS-16SKVP-ND Owner's Manual](#)

(230 pages)

[Air Conditioner Toshiba RAS-10 SKV Series Owner's Manual](#)

(8 pages)

[Air Conditioner Toshiba RAS-10 SKV Series Owner's Manual](#)

Air conditioner (split type) (4 pages)

[Air Conditioner Toshiba RAS-13SKHP-E Service Manual](#)

Split wall type air conditioner (70 pages)

[Air Conditioner Toshiba RAS-10SKH-ES Service Manual](#)

Split wall type (68 pages)

[Air Conditioner Toshiba RAS-B10 Series Installation Manual](#)

(68 pages)

[Air Conditioner Toshiba RAS-10S3KV-E Owner's Manual](#)

(7 pages)

[Air Conditioner Toshiba RAS-13S3KV-E Service Manual](#)

(108 pages)

[Air Conditioner Toshiba RAS-24S3KHS-EE Owner's Manual](#)

(8 pages)

[Air Conditioner Toshiba RAS-10SKP Series Owner's Manual](#)

(8 pages)

Related Content for Toshiba RAS-13SKV-E

[RAS-25S4KVDG-ND Discharge Temperature Control](#)

Toshiba RAS-25S4KVDG-ND

[RAS-B22PKVSG-TR Discharge Temperature Control](#)

Toshiba RAS-B22PKVSG-TR

[RAS-25S4KVPG-ND Discharge Temperature Control](#)

Toshiba RAS-25S4KVPG-ND

[RAS-10S3AV-E Discharge Temperature Control](#)

Toshiba RAS-10S3AV-E

[RAS-18S3KV-E Discharge Temperature Control](#)

Toshiba RAS-18S3KV-E

[RAS-5M34U2AVG-E Discharge Temperature Control](#)

Toshiba RAS-5M34U2AVG-E

[RAS-25G3KVSG-ND Discharge Temperature Control](#)

Toshiba RAS-25G3KVSG-ND

[RAS-25E2KVG-ND Discharge Temperature Control](#)

Toshiba RAS-25E2KVG-ND

This manual is also suitable for:

[Ras-13sav-eRas-16skv-eRas-10savr-eRas-13skvr-eRas-13savr-eRas-16sav-e](#) ... [Show all](#)