

Construction Views - Toshiba RAS-13SKV-E Service Manual

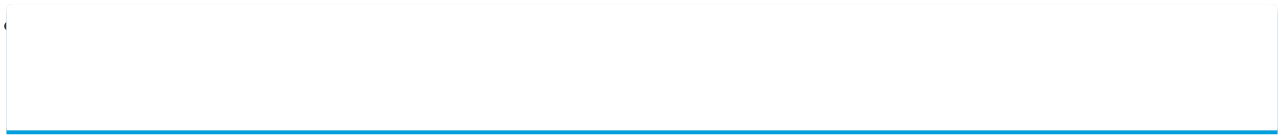
Split type indoor/outdoor unit

1
2
3
4
5
6
7
8
9
10
11
12
13
14
15
16
17
18

19
20
21
22
23
24
25
26
27
28
29
30
31
32
33
34
35
36
37
38
39
40
41
42
43
44
45
46
47
48
49
50
51
52
53
54
55
56
57
58
59
60
61
62
63
64
65
66
67
68

69
70
71
72
73
74
75
76
77
78
79
80
81
82
83
84
85
86
87
88
89
90
91
92
93
94
95
96
97
98
99
100
101
102
103
104
105
106
107
108
109
110
111
112
113
114
115
116
117
118

119
120
121



•

Table of Contents

-

Troubleshooting

•

Bookmarks



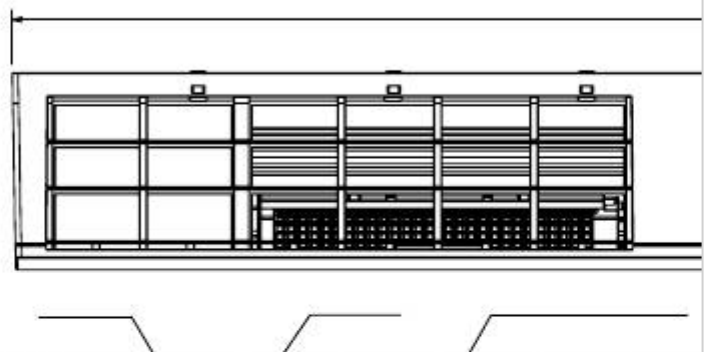
4-1. Indoor Unit
RAS-10SKVR-E
RAS-13SKVR-E
RAS-16SKVR-E

Front panel
48

Knock out system
Installation plate hanger
(For 10, 13 series; Flare
(For 16 series; Flare

4. CONSTRUCTION VIEWS

Air inlet
Air filter
Heat exchanger
116



Installation plate hanger
 Connecting pipe (0.35m)
 9.52mm)
 12.7mm)
 84.5
 235
 215

Hanger

Minimum
 distance
 to ceiling
 170 or more

Hanger

84.5
 150
 160.5

Center line

- 15 -

790

Plasma air purifier

Air ionizer

62

480

193

Drain hose (0.50m)

Connecting pipe (0.40m)

(Flare

6.35mm)

621

235

215

Minimum
 distance
 to ceiling

Hanger

160.5

150

Installation plate outline

Revised-1

205

Knock out system

69

56

Wireless remote controller

84.5

63

Remote controller holder

Minimum
 distance
 to ceiling

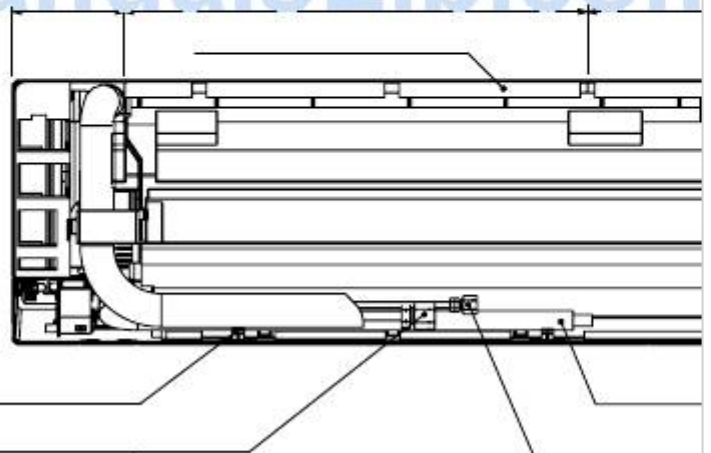
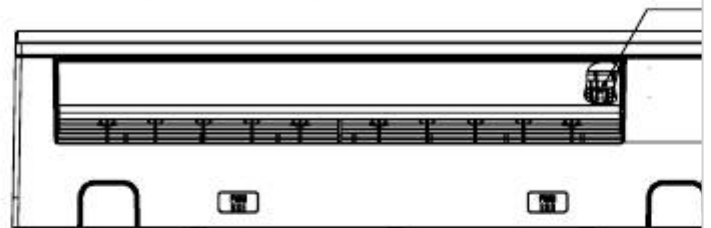
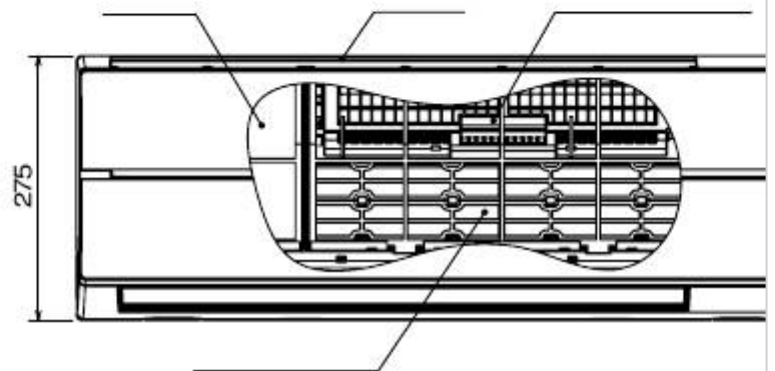
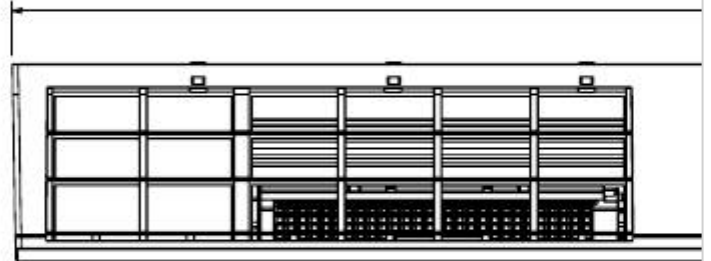
170 or more

84.5

48

19

26



ManualsLib.com

[Previous Page](#)
[Next Page](#)

1
...
13
14
15
16
17
18
19
20

Quick Links:

[Service Manual](#)

[Indoor Unit](#)

[How to Diagnose the Trouble](#)

Chapters

[Service Manual 2](#)

[Auto Restart Function/Remote Controller and Its Functions 32](#)

Related Manuals for Toshiba RAS-13SKV-E

[Air Conditioner Toshiba RAS-13SKV-E Service Manual](#)

Indoor/outdoor unit, split type air conditioner (120 pages)

[Air Conditioner Toshiba RAS-10SAVP-E Service Manual](#)

(119 pages)

[Air Conditioner Toshiba RAS-B10SKVP-E Owner's Manual](#)

Split type; for general public use (31 pages)

[Air Conditioner Toshiba RAS-B10SKVP-E Service Manual](#)

Split type air conditioner (119 pages)

[Air Conditioner Toshiba RAS-10SKVP-ND Owner's Manual](#)

(61 pages)

[Air Conditioner Toshiba RAS-16SKVP-ND Owner's Manual](#)

(230 pages)

[Air Conditioner Toshiba RAS-10 SKV Series Owner's Manual](#)

Air conditioner (split type) (4 pages)

[Air Conditioner Toshiba RAS-M14GAV-E Installation Manual](#)

Split type (12 pages)

[Air Conditioner Toshiba RAS-13SKHP-E Service Manual](#)

Split wall type air conditioner (70 pages)

[Air Conditioner Toshiba RAS-13SKV2-E Service Manual](#)

Split type (111 pages)

[Air Conditioner Toshiba RAS-13SK-E Service Manual](#)

Air conditioner split wall type (56 pages)

[Air Conditioner Toshiba RAS-07SKHP Owner's Manual](#)

Split type indoor unit outdoor unit ras-07, 10, 13 skhp series, ras-07, 10, 13 s2ah series (4 pages)

[Air Conditioner Toshiba RAS-10SKVP2-E Service Manual](#)

Split type indoor unit high wall, heat pump type outdoor unit heat pump type (111 pages)

[Air Conditioner Toshiba RAS-10S3KHS-EE Installation Manual](#)

(20 pages)

[Air Conditioner Toshiba RAS-24S3KHS-EE Owner's Manual](#)

(8 pages)

[Air Conditioner Toshiba RAS-10SKP Series Owner's Manual](#)

(8 pages)

Related Content for Toshiba RAS-13SKV-E

[RAS-2M10G3AVG-E Construction Views](#)

Toshiba RAS-2M10G3AVG-E

[RAS-5M34G3AVG-E Construction Views](#)

Toshiba RAS-5M34G3AVG-E

[MMU-UP0031YHP-ETR Construction Views \(External Views\)](#)

Toshiba MMU-UP0031YHP-ETR

[RAV-GV1101AT8P-TR Construction Views \(External Views\)](#)

Toshiba RAV-GV1101AT8P-TR

[Carrier MMU-UP0151YHP-UL Construction Views \(External Views\)](#)

Toshiba Carrier MMU-UP0151YHP-UL

[MCY-MHP0806HT8-C Series Construction Views](#)

Toshiba MCY-MHP0806HT8-C Series

[Carrier TCB-IFDMR01UP-UL Construction Views \(External Views\)](#)

Toshiba Carrier TCB-IFDMR01UP-UL

[RAV-GM562ATP-TR Construction Views \(External Views\)](#)

Toshiba RAV-GM562ATP-TR

This manual is also suitable for:

[Ras-16skv-eRas-10skvr-eRas-13skvr-eRas-13sav-eRas-16sav-eRas-16skvr-e](#) ... [Show all](#)