

Release Protective Control By Temperature Of Indoor Heat Exchanger - Toshiba RAS-13SKV-E Service Manual

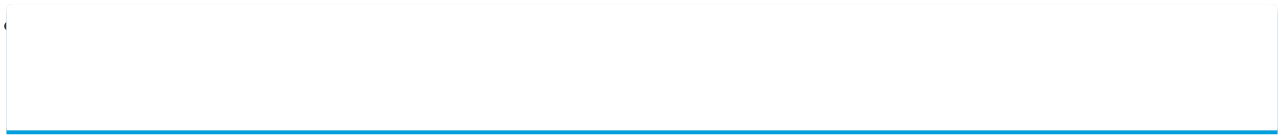
Split type indoor/outdoor unit

1
2
3
4
5
6
7
8
9
10
11
12
13
14
15
16
17
18

19
20
21
22
23
24
25
26
27
28
29
30
31
32
33
34
35
36
37
38
39
40
41
42
43
44
45
46
47
48
49
50
51
52
53
54
55
56
57
58
59
60
61
62
63
64
65
66
67
68

69
70
71
72
73
74
75
76
77
78
79
80
81
82
83
84
85
86
87
88
89
90
91
92
93
94
95
96
97
98
99
100
101
102
103
104
105
106
107
108
109
110
111
112
113
114
115
116
117
118

119
120
121



•

Table of Contents

-

Troubleshooting

•

Bookmarks



Item

6. Release protective

<In cooling/dry operation>

control by tempera-

(Prevent freezing control for indoor heat exchanger)

ture of indoor heat

In cooling/dry operation, the sensor of indoor heat

exchanger

exchanger detects evaporation temperature and controls the compressor speed so that temperature of the heat exchanger does not exceed the specified value.

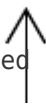
7°C

6°C

5°C

Reduction of compressor speed

temperature



|



<In heating operation>

(Prevent-overpressure control for refrigerating cycle)

In heating operation, the sensor of indoor heat exchanger detects condensation temperature and controls the compressor speed so that temperature of the heat exchanger does not exceed the specified value.

Reduction of compressor speed

55°C

52°C

48°C

Operation flow and applicable data, etc.

Usual cooling capacity control

Usual heating capacity control

R

When the value is in Q zone, the

compressor speed is kept.

P

P

When the value is

in Q zone, the compressor speed is kept.

R

- 38 -

Description

1) When temperature of the indoor heat exchanger drops below 5°C, the compressor speed is reduced. (P zone)

2) When temperature of the indoor heat exchanger rises in the range from 6°C to under 7°C, the compressor speed is kept. (Q zone)

3) When temperature of the indoor heat exchanger rises to 7°C or higher, the capacity control operation returns to the usual control in cooling operation. (R zone)

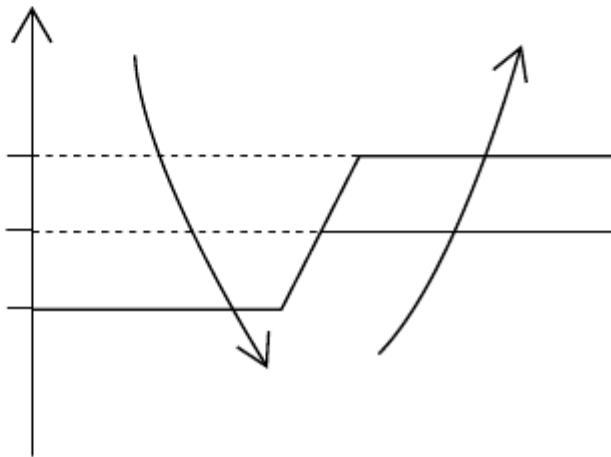
(R zone)

1) When temperature of the indoor heat exchanger rises in the range from 50°C to 55°C, the compressor speed is kept. (Q zone)

(Q zone)

When temperature of the indoor heat exchanger drops in the

Indoor heat exchanger temperature



Indoor heat exchanger temperature



range from 46°C to under 55°C,
the compressor speed is kept.

(Q zone)

2) When temperature of the indoor
heat exchanger rises to 55°C or
higher, the compressor speed is
reduced. (P zone)

3) When temperature of the indoor
heat exchanger does not rise to
50°C, or when it drops below to
46°C, the capacity control
operation returns to the usual
control in heating operation.

(R zone)

① ▲

Table of Contents

[Previous Page](#)
[Next Page](#)

1
...
36
37
38
39
40
41
42
43

Quick Links:

[Service Manual](#)

[Indoor Unit](#)

[How to Diagnose the Trouble](#)

Chapters

[Service Manual 2](#)

[Auto Restart Function/Remote Controller and Its Functions 32](#)

Related Manuals for Toshiba RAS-13SKV-E

[Air Conditioner Toshiba RAS-13SKV-E Service Manual](#)

Indoor/outdoor unit, split type air conditioner (120 pages)

[Air Conditioner Toshiba RAS-10SAVP-E Service Manual](#)

(119 pages)

[Air Conditioner Toshiba RAS-B10SKVP-E Owner's Manual](#)

Split type; for general public use (31 pages)

[Air Conditioner Toshiba RAS-B10SKVP-E Service Manual](#)

Split type air conditioner (119 pages)

[Air Conditioner Toshiba RAS-10SKVP-ND Owner's Manual](#)

(61 pages)

[Air Conditioner Toshiba RAS-16SKVP-ND Owner's Manual](#)

(230 pages)

[Air Conditioner Toshiba RAS-10 SKV Series Owner's Manual](#)

Air conditioner (split type) (4 pages)

[Air Conditioner Toshiba RAS-M14GAV-E Installation Manual](#)

Split type (12 pages)

[Air Conditioner Toshiba RAS-13SKHP-E Service Manual](#)

Split wall type air conditioner (70 pages)

[Air Conditioner Toshiba RAS-13SKV2-E Service Manual](#)

Split type (111 pages)

[Air Conditioner Toshiba RAS-13SK-E Service Manual](#)

Air conditioner split wall type (56 pages)

[Air Conditioner Toshiba RAS-07SKHP Owner's Manual](#)

Split type indoor unit outdoor unit ras-07, 10, 13 skhp series, ras-07, 10, 13 s2ah series (4 pages)

[Air Conditioner Toshiba RAS-10SKVP2-E Service Manual](#)

Split type indoor unit high wall, heat pump type outdoor unit heat pump type (111 pages)

[Air Conditioner Toshiba RAS-10S3KHS-EE Installation Manual](#)

(20 pages)

[Air Conditioner Toshiba RAS-24S3KHS-EE Owner's Manual](#)

(8 pages)

[Air Conditioner Toshiba RAS-10SKP Series Owner's Manual](#)

(8 pages)

Related Content for Toshiba RAS-13SKV-E

[RAS-M05G3KVSG-E Release Protective Control By Temperature Of Indoor Heat Exchanger](#)

Toshiba RAS-M05G3KVSG-E

[RAS-18S3KV-E Release Protective Control By Temperature Of Indoor Heat Exchanger](#)

Toshiba RAS-18S3KV-E

[RAS-M07G3DV-E Release Protective Control By Temperature Of Indoor Heat Exchanger](#)

Toshiba RAS-M07G3DV-E

[RAS-M07N4KVRG-E Release Protective Control By Temperature Of Indoor Heat Exchanger](#)

Toshiba RAS-M07N4KVRG-E

[RAS-25G3KVSG-ND Release Protective Control By Temperature Of Indoor Heat Exchanger](#)

Toshiba RAS-25G3KVSG-ND

[RAS-25E2KVG-ND Release Protective Control By Temperature Of Indoor Heat Exchanger](#)

Toshiba RAS-25E2KVG-ND

[RAS-B05BKVG-E Release Protective Control By Temperature Of Indoor Heat Exchanger](#)

Toshiba RAS-B05BKVG-E

[RAS-B05E2KVG-E Release Protective Control By Temperature Of Indoor Heat Exchanger](#)

Toshiba RAS-B05E2KVG-E

This manual is also suitable for:

[Ras-16skv-eRas-10skvr-eRas-13skvr-eRas-13sav-eRas-16sav-eRas-16skvr-e](#) ... [Show all](#)