



# I Concealed-Duct Type (U Type); Required Minimum Space For Installation And Service - Sanyo 26 series Installation Instructions Manual

Split system heat pump air conditioner



1

2

3

4

5

Table Of Contents

6

7

8

9

10

11

12

13

14

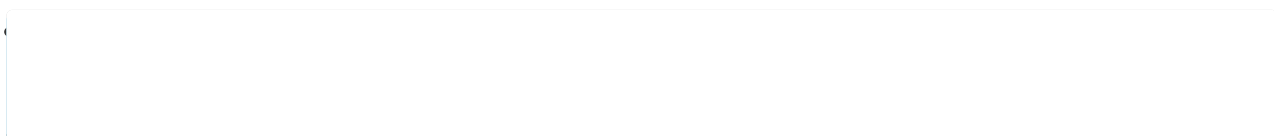
15

16

17

18  
19  
20  
21  
22  
23  
24  
25  
26  
27  
28  
29  
30  
31  
32  
33  
34  
35  
36  
37  
38  
39  
40  
41  
42  
43  
44  
45  
46  
47  
48  
49  
50  
51  
52  
53  
54  
55  
56  
57  
58  
59  
60  
61  
62  
63  
64  
65  
66  
67

68  
69  
70  
71  
72  
73  
74  
75  
76  
77  
78  
79  
80  
81  
82  
83  
84  
85  
86  
87  
88  
89  
90  
91  
92  
93  
94  
95  
96  
97  
98  
99  
100  
101  
102  
103  
104  
105  
106  
107  
108  
109  
110



•

[Table of Contents](#)

•

## Bookmarks







I Concealed-Duct Type (U Type)

**3-22. Required Minimum Space for Installation and Service**

G

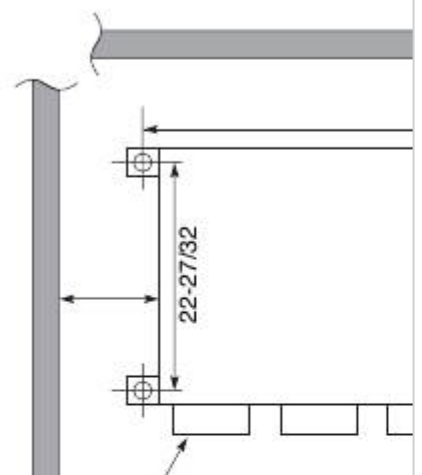
This air conditioner is usually installed above the ceiling so that the indoor unit and ducts are not visible. Only the air intake and air outlet ports are visible from below.

G

The minimum space for installation and service is shown in Fig. 3-91 and Table 3-4.

G

It is recommended that space is provided (17-23/32 x 17-23/32 in.) for checking and servicing the electrical system.



G

Fig. 3-92 and Table 3-5 show the detailed dimensions of the indoor unit.

**Table 3-4**

**Type**

**A (Length)**

**Number of duct flanges**

**Table 3-5**

**Dimension**

**A**

**B**

**Type**

35-7/16

**UH2672R**

37-7/8

(7-3/32×5)

54-11/32

**UH3672R**

56-25/32

(9-1/16×6)

13/32

3/4

1-7/32

3-17/32

**26**

42-17/32 (1,080)

**3**

**C**

**D**

**E**

39-3/8 42-17/32 11-13/32 2-23/32 38-19/32 39-31/32 5-1/8

58-9/32 61-13/32 13-3/16 12-7/32 57-15/32 58-27/32 5-1/8

L-ø1/4

(Hole)

I

J

K

J

A (O.D.)

H (Duct suspension bolt pitch)

G (Ceiling opening dimension)

B

C

D (Suspension bolt pitch)

E

E

E

A (Suspension bolt pitch)

min.

Indoor Unit

9-27/32

Air outlet duct flange

**Fig. 3-91**

Unit: inch (mm)

**36**

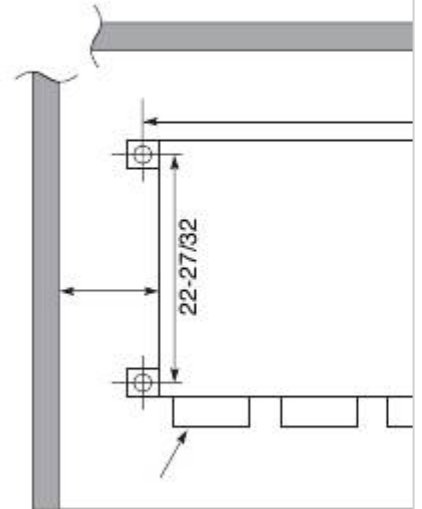
61-13/32 (1,560)

**4**

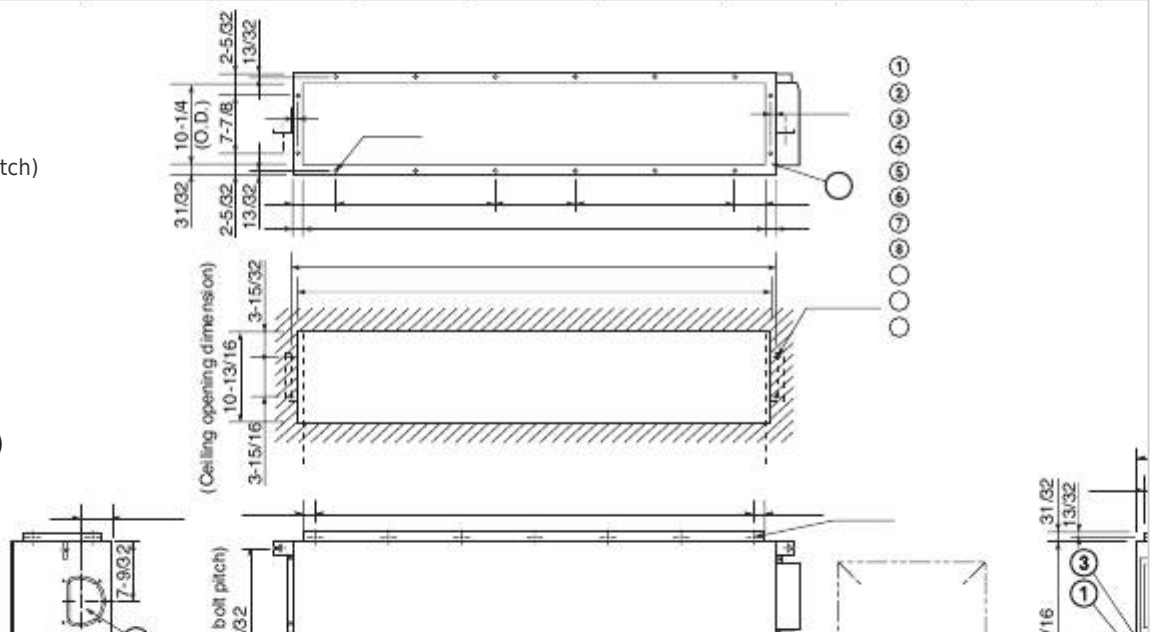
**F**

**G**

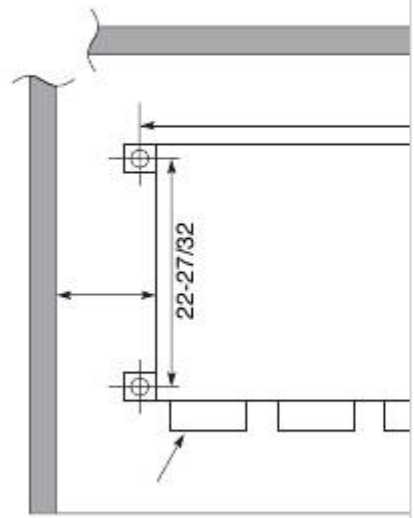
**H**







- Refrigerant tubing joint (liquid tube)
- Refrigerant tubing joint (gas tube)
- 13/32
- Upper drain port (O.D. 1-1/4 in.)
- Bottom drain port (O.D. 1-1/32 in.)
- Suspension lug
- 11
- I
- Power supply outlet (2- $\phi$ 1-3/16 hole)
- 3/4
- Fresh air intake port ( $\phi$ 5-29/32 hole)
- Flange for the flexible air outlet duct ( $\phi$ 7-7/8 hole)
- 9
- Tube cover
- 4- $\phi$ 15/32
- 10
- Electrical component box
- (Hole)
- Flange for the air intake duct
- 11
- (Option or field supply)
- 1-7/32
- M- $\phi$ 1/8
- (Hole)
- Inspection access
- (17-23/32
- x
- 17-23/32)
- (Field supply)
- 1-9/16
- (5-29/32)
- F
- 2-15/16
- 2-9/16
- Inspection access panel

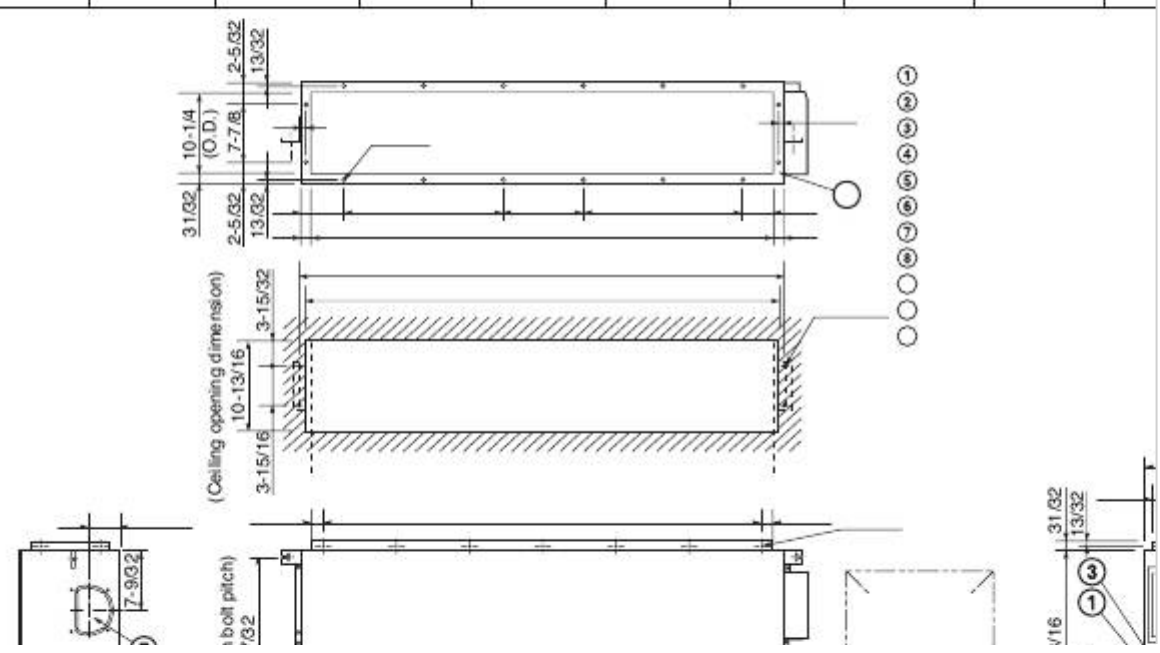


**Fig. 3-92**

- 51
- Electrical component box
- Inspection access
- 17-23/32
- x


- 17-23/32
- Refrigerant tubing
- min. 25-19/32
- Unit: inch
- Unit: inch (mm)


- I
- J
- K
- 9-21/32
- 9-27/32 12 16
- (9-21/32x1)
- 19-9/32
- 9-7/16 16 18
- (9-21/32x2)
- 12-7/32
- 31/32
- 8-9/32
- 31/32
- 6-7/8
- 10
- 9
- 1-3/8
- 2-3/4
- 5-1/8
- 11-7/32
- Ceiling



**No. of holes**

[Table of Contents](#)

[Previous Page](#)  
[Next Page](#)

1  
...  
48  
49  
50  
**51**  
52  
53  
54  
55

Quick Links:

[Indoor Unit](#)

[Outdoor Unit](#)

[Trouble Diagnostics](#)

## Related Manuals for Sanyo 26 series

[Air Conditioner Sanyo Big PACi 18 Series Technical Data & Service Manual](#)

Big pack i dc inverter (275 pages)

[Air Conditioner Sanyo C4272R Service Manual](#)

Sanyo split system air conditioner service manual (181 pages)

[Air Conditioner Sanyo C4272R S/C Installation Instructions Manual](#)

Sanyo split system heat pump air conditioner installation instructions (111 pages)



[Air Conditioner Sanyo C3072R Parts List](#)

Outdoor unit (4 pages)

[Air Conditioner Sanyo CH3672R Parts List](#)

Outdoor unit (4 pages)

[Air Conditioner Sanyo 000-31 Specifications](#)

Concealed duct air conditioner & heat pump 24,000-31,200 btu/h 13.9-14.9 seer  
(2 pages)

[Air Conditioner Sanyo 26KS72R Specifications](#)

Wall mounted air conditioner (2 pages)

[Heat Pump Sanyo 26THW72R Specifications](#)

Ceiling suspended heat pump (2 pages)

[Air Conditioner Sanyo 26UW72R Specifications](#)

Concealed duct air conditioner (2 pages)

[Air Conditioner Sanyo 26KHS72R Submittal Data](#)

Wall mounted heat pump (2 pages)

[Air Conditioner Sanyo 36UW72R Specifications](#)

Concealed duct air conditioner (2 pages)

[Air Conditioner Sanyo KHHS2672R Specifications](#)

Wall mounted heat pump with heater (2 pages)

[Air Conditioner Sanyo KHS3072R Specifications](#)

Wall mounted air conditioner (2 pages)

[Air Conditioner Sanyo KHS3672R Datasheet](#)

Wall mounted air conditioner (2 pages)

[Air Conditioner Sanyo THW3672R Specifications](#)

Ceiling suspended air conditioner (2 pages)

[Air Conditioner Sanyo XHW2672R Specifications](#)

Ceiling recessed air conditioner (2 pages)

## Related Content for Sanyo 26 series

[SPW-CR365GXH56 Concealed Duct Type \(U Type\)](#)

Sanyo SPW-CR365GXH56

[KH2442 / CH2442 Concealed Duct Type](#)

Sanyo KH2442 / CH2442

[W-3WAY ECO-i 85464369098000 Concealed Duct Type \(U Type\)](#)

Sanyo W-3WAY ECO-i 85464369098000

[Mini ECO-i 85464359981002 I Concealed Duct Type \(U Type\)](#)

Sanyo Mini ECO-i 85464359981002

[ECO R410A Concealed Duct Type \(U Type\)](#)

Sanyo ECO R410A

[C4272R Concealed Duct Type](#)

Sanyo C4272R

[C4272R S/C I Concealed-Duct Type \(U Type\)](#)

Sanyo C4272R S/C

[85464359982001 I Concealed Duct Type \(U Type\)](#)

Sanyo 85464359982001

This manual is also suitable for:

[30 series](#)[36 series](#)[Split system](#)[heat pump](#)[air conditioner](#)[Ch2672r](#)[Ch3072r](#)[Ch3672r](#) ... [Show all](#)