



# Outdoor Unit; Type - Sanyo SPW-X483GH56 Installation Instruction

Eco multi system air conditioner



1  
2  
3  
4  
5  
6  
7  
8  
9  
10  
11  
12  
13  
14  
15  
16  
17  
18

19  
20  
21  
22  
23  
24  
25  
26  
27  
28  
29  
30  
31  
32  
33  
34  
35  
36  
37  
38  
39  
40  
41  
42  
43  
44  
45  
46  
47  
48  
49  
50  
51  
52  
53  
54  
55  
56  
57  
58  
59  
60  
61  
62  
63  
64  
65  
66  
67  
68

69  
70  
71  
72  
73  
74  
75  
76  
77  
78  
79  
80  
81  
82  
83  
84  
85  
86  
87  
88  
89  
90  
91

--

- 

[Table of Contents](#)

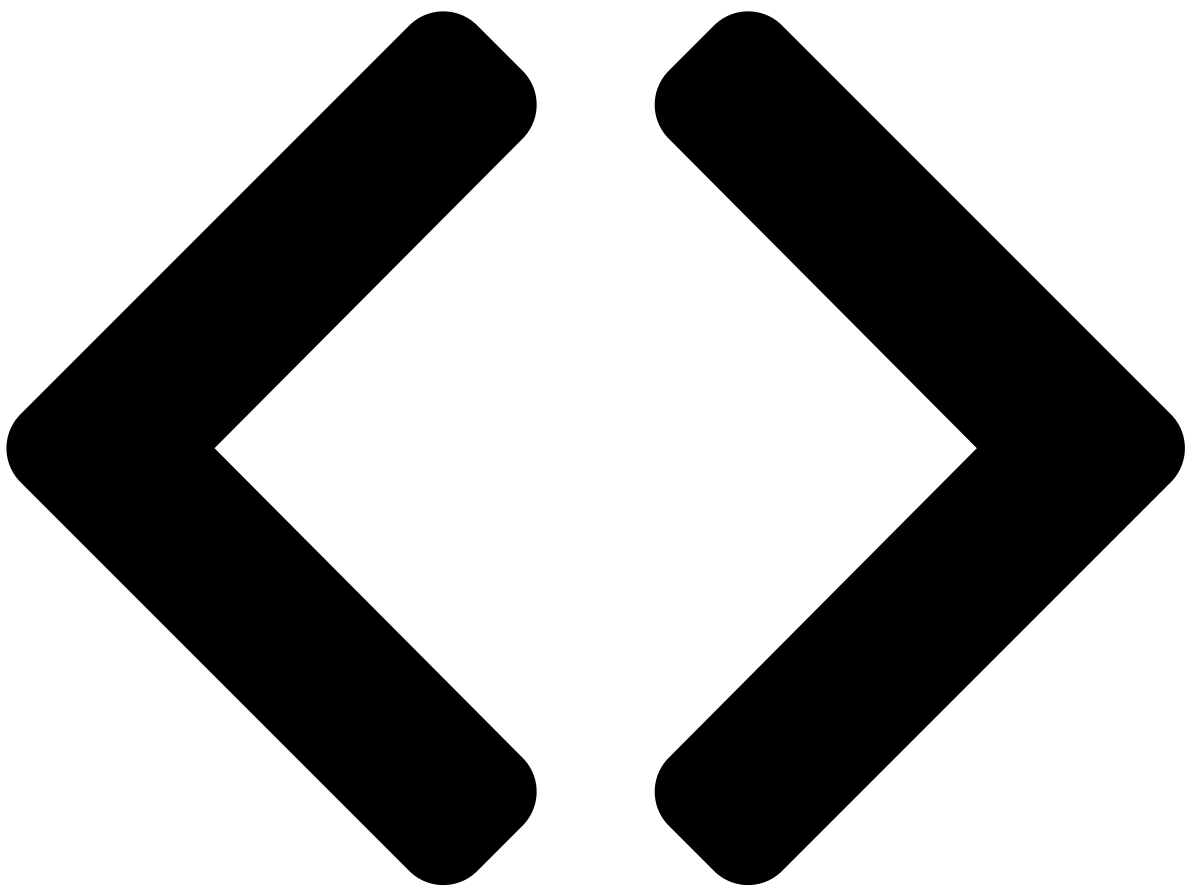
•

Bookmarks

--







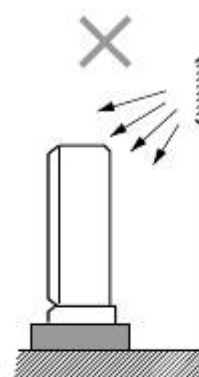
## Outdoor Unit

### AVOID

heat sources, exhaust fans, etc.  
damp, humid or uneven locations.

### DO:

choose a place as cool as possible.  
choose a place that is well ventilated and outside  
air temperature does not exceed maximum 45 °C  
constantly.  
allow enough room around the unit for air intake /  
exhaust and possible maintenance. (Fig. 2-2)  
provide a solid base; about 15 cm above ground  
level to reduce humidity and protect the



unit against possible water damage and decreased service life.

use an

unit, reducing vibration and noise.

### Multiple installation

Unit spacing if air discharge chamber is not used.

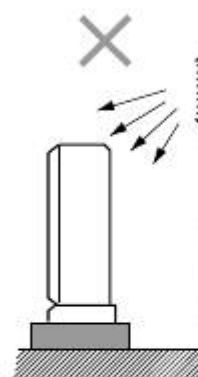
Min. 1m

If you would like to make the separation smaller on the air-discharge side, use an air-discharge chamber.

You can install any number of units side-by-side.

provide a solid base (concrete block, 10 × 40 cm beams or equal), a minimum of 15 cm above ground level to reduce humidity and protect the unit against possible water damage and decreased service life.

use anchor bolts or equal to bolt down the unit, reducing vibration and noise. (Fig. 2-3)



Min.

1 cm

Unit spacing when air discharge chamber is used.

Min. 1.5

Min. 1m

Min. 1 m

Min. 35 cm

Min. 30cm

Min. 3.5m

Min. 35 cm

Min. 20cm

Only up to 3 units can be installed side-by-side under the above conditions. The next group must be spaced at least 30 cm away from the first group.

14

Hot air

Out-

door

unit

Fig. 2-1

Top view

Min.20 cm

Min.50 cm

0818\_C\_1

Fig. 2-2

Min. 20 cm

Min. 30 cm

Air in

Air

discharge

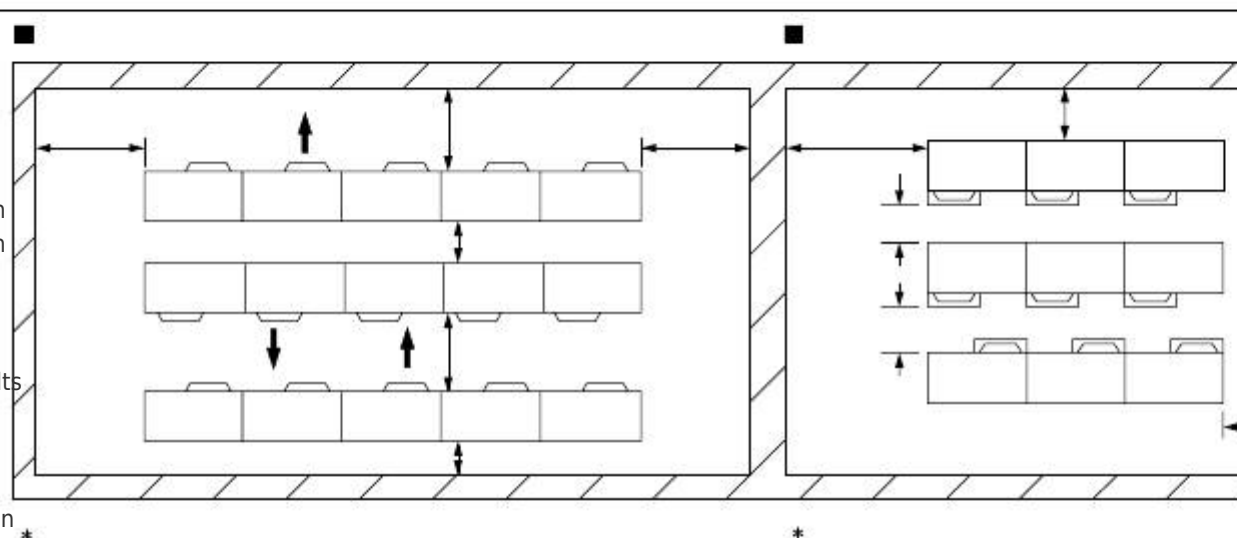
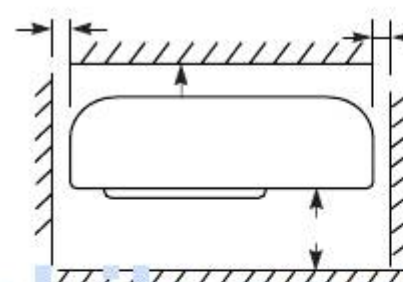
Anchor bolts

(4 pieces)

Fig. 2-3

S4179544

Exhaust fan



Heat source

0591\_C\_I

Side view

Obstacle above

Min.

1 cm

Min.

2 m

Air

discharge

Ground

0486\_C\_I

Min. 1 m

Air

discharge chamber

Min. 30 cm

0816\_C\_I

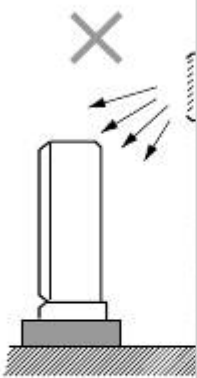
Air in

Min. 15cm

0425\_C\_I

Min.

2 m



[Table of Contents](#)

[Previous Page](#)  
[Next Page](#)

1  
...  
13  
14  
15  
16  
17  
18  
19  
20

Quick Links:

[Please Read before Starting](#)

[Indoor Unit](#)

[Outdoor Unit](#)

## Chapters

[Table of Contents](#) 4

[Concealed-Duct Type \( U Type\) 3-25. Required Minimum Space for Installation and Service](#) 44

## Related Manuals for Sanyo SPW-X483GH56

[Air Conditioner Sanyo SPW-U253GH56 Service Manual](#)

Split system air conditioner (108 pages)



[Air Conditioner Sanyo SPW-D253GH56 Service Manual](#)

Split system (108 pages)

[Air Conditioner Sanyo SPW-T253GH56 Service Manual](#)

Split system (106 pages)

[Air Conditioner Sanyo SPW-X253GH56 Service Manual](#)

Split system (105 pages)

[Air Conditioner Sanyo 2-WAY ECO-i SPW-C0705DXHN8 Service Manual](#)

Multi system (143 pages)

[Air Conditioner Sanyo SPW-C1155DXHN8 Technical Data & Service Manual](#)

2-way eco-i multi system (242 pages)

[Air Conditioner Sanyo ECOi C0705DXHN8 Brochure & Specs](#)

2 and 3 pipe electric vrf systems (10 pages)

[Air Conditioner Sanyo MINI ECO-i SPW-CR365GXH56B Service Manual](#)

(252 pages)

[Air Conditioner Sanyo SPW-D253G56 Service Manual](#)

Split system air conditioner (66 pages)

[Air Conditioner Sanyo SPW-CR365GXH56 Technical Data Manual](#)

Mini eco-i system (346 pages)

[Air Conditioner Sanyo SPW-C483GYH8 Service Manual](#)

Eco multi system (235 pages)

[Air Conditioner Sanyo SPW-C256VH Technical Data & Service Manual](#)

4-way air discharge semi-concealed wall-mounted ceiling-mounted concealed-duct (517 pages)

[Air Conditioner Sanyo Big PACi 18 Series Technical Data & Service Manual](#)

Big pack i dc inverter (275 pages)

[Air Conditioner Sanyo SPW-CR1503GDYH8 Technical Data & Service Manual](#)

W-eco multi system series (377 pages)

[Air Conditioner Sanyo SPW-XR253GH56 Technical Data & Service Manual](#)

(223 pages)

[Air Conditioner Sanyo SPW-XR254EH56 Installation And Operation Manual](#)

Dc inverter air conditioner (40 pages)

## Related Content for Sanyo SPW-X483GH56

[ECO-i AHX0752 Outdoor Unit](#)

Sanyo ECO-i AHX0752

[MINI ECO-i SPW-CR365GXH56B System Address \(Outdoor Unit\)](#)

Sanyo MINI ECO-i SPW-CR365GXH56B

[SAP-CMRV3143GJH Outdoor Unit](#)

Sanyo SAP-CMRV3143GJH

[2-WAY ECO-i SPW-C0705DXHN8 Selecting Outdoor Unit For Operation](#)

Sanyo 2-WAY ECO-i SPW-C0705DXHN8

[SAP-KM97GHS5A Neither Indoor Nor Outdoor Unit Runs](#)

Sanyo SAP-KM97GHS5A

[SPW-D253G56 \(B\) Outdoor Unit](#)

Sanyo SPW-D253G56

[SPW-D253GH56 \(B\) Outdoor Unit](#)

Sanyo SPW-D253GH56

[SAP-CMRV1426EH Outdoor Unit](#)

Sanyo SAP-CMRV1426EH

This manual is also suitable for:

[Spw-d483gh56Spw-x363gh56Spw-t363gh56Spw-u363gh56Spw-d363gh56Spw-t483gh56](#) ... [Show all](#)