

Air-Discharge Chamber For Top Discharge; Installing The Unit In Heavy Snow Areas; Precautions When Installing In Heavy Snow Areas; Dimensions Of Snow/Wind-Proof Ducting And Refrigerant Tubing Space For Installation - Sanyo SPW-X483GH56 Installation Instruction

Eco multi system air conditioner

1
2
3
4
5
6
7
8
9
10
11
12
13
14
15
16
17
18

19
20
21
22
23
24
25
26
27
28
29
30
31
32
33
34
35
36
37
38
39
40
41
42
43
44
45
46
47
48
49
50
51
52
53
54
55
56
57
58
59
60
61
62
63
64
65
66
67
68

69
70
71
72
73
74
75
76
77
78
79
80
81
82
83
84
85
86
87
88
89
90
91

--

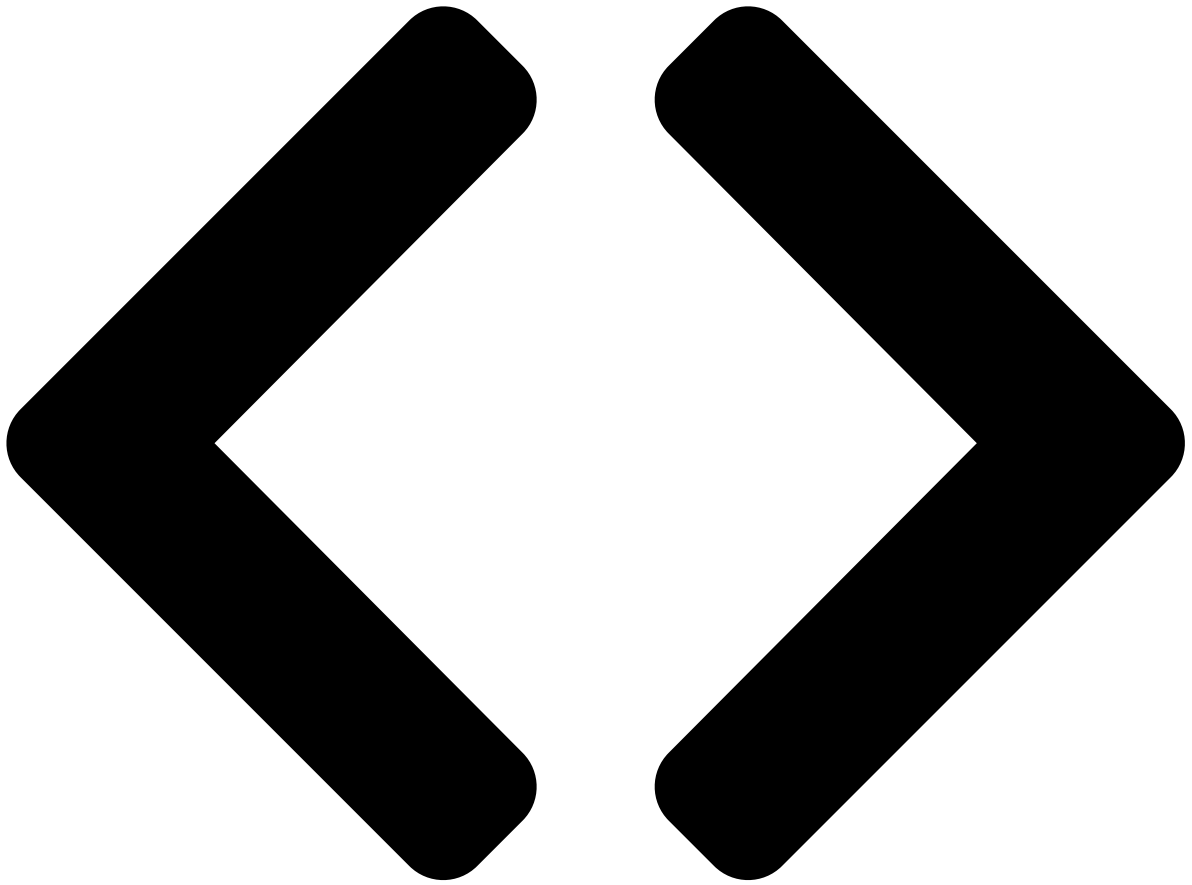
•

[Table of Contents](#)

•

Bookmarks

--



Enlarged version

2-1.

Air- Discharge Chamber for Top Discharge

Install the air-discharge chamber in the field when:
it is difficult to keep a space of 50 cm minimum
between the air-discharge outlet and the obstacle.
the air-discharge outlet is facing the sidewalk and
discharged hot air can annoy the passers-by.

(Fig. 2-4.)

2-2.

Installing the Unit in Heavy Snow Areas

In positions with strong wind, snow-proof ducting
should likewise be fitted and direct exposure to the
wind should be avoided as much as possible.



The following problems may occur when the outdoor unit is not provided with a platform and snow-proof ducting.

a)

The outdoor fan may not run and there may be damage to the unit.

b)

There may be no air flow.

c)

The tubing may freeze and burst.

d)

The condenser pressure may drop because of strong wind, and the indoor unit may freeze.

2-3.

Precautions When Installing in Heavy Snow Areas

(1)

The platform should be higher than the maximum snow depth. (Fig. 2-5)

(2)

The two anchoring feet of the outdoor unit should be used for the platform, and the platform should be installed beneath the air-intake side of the outdoor unit.

(3)

The platform foundation must be solid and the unit must be secured with anchor bolts.

(4)

When installing on a roof subject to strong wind, countermeasures must be taken to prevent the unit from being overturned.

2-4.

Dimensions of Snow / Wind-Proof Ducting and Refrigerant Tubing Space for Installation

Outdoor Unit

Duct

Min. 100

300

Min. 100

300

Duct

Unit: mm

0489_C_1

In regions with snow fall, the outdoor unit should be provided with a platform and snow-proof duct.

Without snow-proof ducting
(Low platform)

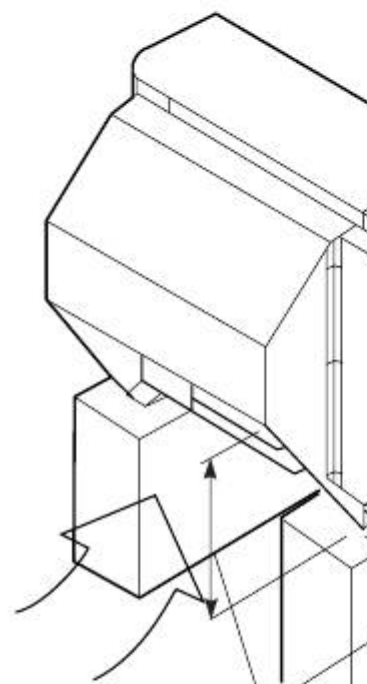
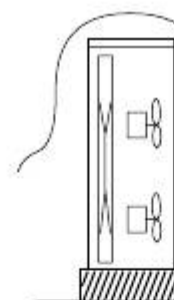


Fig. 2-5

Outdoor
Unit
Duct
Air
Intake

About 1/2 of the
unit height

15

S4179544

Air discharge

0426_C_I

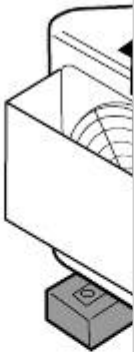


Fig. 2-4

Snow-proof
ducting
(High platform)

0819_C_I

Fig. 2-6

Duct

Higher than the
max.
snow depth

Air

Intake

Platform (foundation)

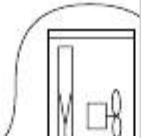
Fig. 2-7

Example of Installation

0490_C_I

Fig. 2-8

0817_C_I



[Previous Page](#)
[Next Page](#)

1
...
14
15
16
17
18
19
20
21

Quick Links:

[Please Read before Starting](#)

[Indoor Unit](#)

[Outdoor Unit](#)

Chapters

[Table of Contents](#) 4

[Concealed-Duct Type \(U Type\) 3-25. Required Minimum Space for Installation and Service](#) 44

Related Manuals for Sanyo SPW-X483GH56

[Air Conditioner Sanyo SPW-U253GH56 Service Manual](#)

Split system air conditioner (108 pages)

[Air Conditioner Sanyo SPW-D253GH56 Service Manual](#)

Split system (108 pages)

[Air Conditioner Sanyo SPW-T253GH56 Service Manual](#)

Split system (106 pages)

[Air Conditioner Sanyo SPW-X253GH56 Service Manual](#)

Split system (105 pages)

[Air Conditioner Sanyo 2-WAY ECO-i SPW-C0705DXHN8 Service Manual](#)

Multi system (143 pages)

[Air Conditioner Sanyo SPW-C1155DXHN8 Technical Data & Service Manual](#)

2-way eco-i multi system (242 pages)

[Air Conditioner Sanyo ECOi C0705DXHN8 Brochure & Specs](#)

2 and 3 pipe electric vrf systems (10 pages)

[Air Conditioner Sanyo MINI ECO-i SPW-CR365GXH56B Service Manual](#)

(252 pages)

[Air Conditioner Sanyo SPW-D253G56 Service Manual](#)

Split system air conditioner (66 pages)

[Air Conditioner Sanyo SPW-CR365GXH56 Technical Data Manual](#)

Mini eco-i system (346 pages)

[Air Conditioner Sanyo SPW-C483GYH8 Service Manual](#)

Eco multi system (235 pages)

[Air Conditioner Sanyo SPW-C256VH Technical Data & Service Manual](#)

4-way air discharge semi-concealed wall-mounted ceiling-mounted concealed-duct (517 pages)

[Air Conditioner Sanyo Big PACi 18 Series Technical Data & Service Manual](#)

Big pack i dc inverter (275 pages)

[Air Conditioner Sanyo SPW-CR1503GDYH8 Technical Data & Service Manual](#)

W-eco multi system series (377 pages)

[Air Conditioner Sanyo SPW-XR253GH56 Technical Data & Service Manual](#)

(223 pages)

[Air Conditioner Sanyo SPW-XR254EH56 Installation And Operation Manual](#)

Dc inverter air conditioner (40 pages)

Related Content for Sanyo SPW-X483GH56

[ECO-i AHX0752 Rcs-Sh80Aab.wl For 4-Way Air Discharge Semi-Concealed \(X Type\)](#)

Sanyo ECO-i AHX0752

[SPW-CR363GVH8 Way Air Discharge Semi-Concealed Type](#)

Sanyo SPW-CR363GVH8

[SAP-KV94GJ Air Discharge](#)

Sanyo SAP-KV94GJ

[SPW-CR1503GDYH8 Way Air Discharge Semi-Concealed Type](#)

Sanyo SPW-CR1503GDYH8

[Big PACi 18 Series 4-Way Air Discharge Semi-Concealed Type](#)

Sanyo Big PACi 18 Series

[SPW-C256VH Air Discharge Chamber For Top Discharge](#)

Sanyo SPW-C256VH

[SPW-CR365GXH56 Air Discharge Chamber For Top Discharge](#)

Sanyo SPW-CR365GXH56

[KS2432A Air Discharge Chamber For Top Discharge](#)

Sanyo KS2432A

This manual is also suitable for:

[Spw-d483gh56Spw-x363gh56Spw-t363gh56Spw-u363gh56Spw-d363gh56Spw-t483gh56](#) ... [Show all](#)