

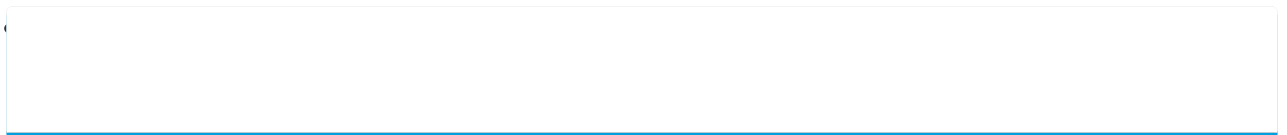


# Indoor Unit - Toshiba RAS-M14GAV-E Installation Manual

Split type



1
Table Of Contents
2
3
4
5
6
7
8
9
10
11
12



•

[Table of Contents](#)

•

## Bookmarks







## Installation Place

- A place which provides the spaces around the indoor unit as shown in the diagram.
- A place where there are no obstacles near the air inlet and outlet.
- A place which allows easy installation of the piping to the outdoor unit.
- A place which allows the front panel to be opened.

### CAUTION

- Direct sunlight to the indoor unit's wireless receiver should be avoided.
- The microprocessor in the indoor unit should not be too close to RF noise sources.

(For details, see the owner's manual)

### Remote control

- A place where there are no obstacles such as a curtain that may block the signal from the remote control.
- Do not install the remote control in a place exposed to direct sunlight or close to a heating source such as a stove.
- Keep the remote control at least 1 m apart from the nearest TV set or stereo equipment (This is necessary to prevent image disturbances or noise interference).

- The location of the remote control should be determined as shown below.

(Side view)  
7 m  
Remote control  
Reception range

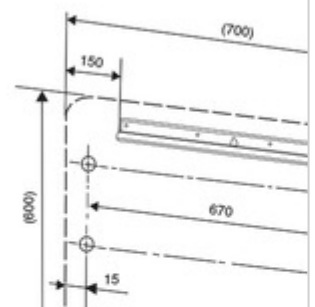
### CAUTION

- Direct sunlight to the indoor unit's wireless receiver should be avoided.
- The microprocessor in the indoor unit should not be too close to RF noise sources.  
(For details, see the owner's manual)

## INDOOR UNIT

### Installation Place

### Mounting the installation p



\* : Axial distance

## Cutting a Hole and Mounting Installation Plate

### Cutting a hole

(Rear piping)  
100  
60  
(Bottom piping)  
100  
70

1. After determining the pipe hole position, drill the pipe hole (∅65 mm) at a slight downward slant to the outdoor side.

### NOTE

• When drilling a wall that contains a metal mesh, wire mesh or metal plate, be sure to use a pipe hole brim ring sold separately.

- A place which provides the spaces around the indoor unit as shown in the figure separately.
- A place where there are no obstacles near the air inlet and outlet.
- A place which allows easy installation of the piping to the outdoor unit.
- A place which allows the front panel to be opened.

## INDOOR UNIT

(Top view)

1. Securely fit the installation plate onto the wall by screwing it in the upper and lower parts to hook up the indoor unit.
2. To mount the installation plate on a concrete wall with anchor bolts, use the anchor bolt holes as illustrated in the figure separately.
3. Install the installation plate horizontally in the wall.

Installation plate

(Keep horizontal direction)

Remote control

∅5 mm hole

### CAUTION

Failure to firmly install the unit may result in personal injury and property damage if the unit falls.

(Side piping)

- In case of block, brick, concrete or similar type walls, make ∅5 mm holes in the wall.
- Insert clip anchors for appropriate mounting screws.

45

: Pipe hole (∅65 mm)

4

### Mounting the installation plate and screw position

When the installation plate is directly mounted

on the wall

7

Mounting screw

∅4 mm x 25 s

Clip anchor

(local parts)

Toshiba 1112150201 (EN)

(Unit : mm)

EN

ES

FR

Wall

IT

DE

Floor

PT

PL

CZ

RU

CR

Anchor bolt

Projection

HU

15 mm or less

TR

NL

GR

SV

FI

NO

DK

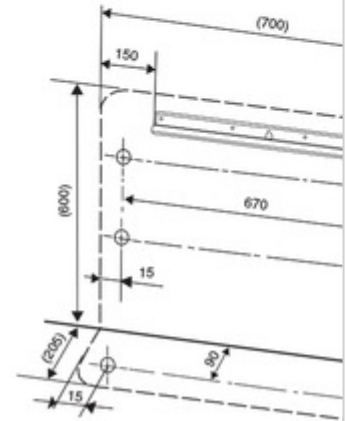
RO

BG

EE

## INDOOR UNIT

### Mounting the installation plate



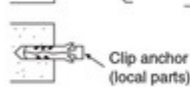
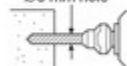
### When the installation plate on the wall

1. Securely fit the installation plate onto the wall and lower parts to hook up the indoor unit.
2. To mount the installation plate on a concrete wall with anchor bolts, use the anchor bolt holes as illustrated in the figure separately.
3. Install the installation plate horizontally in the wall.

Installation plate  
(Keep horizontal direction)



∅5 mm hole



Mounting  
∅4 mm x

### CAUTION

Failure to firmly install the unit may result in personal injury and property damage if the unit falls.

- In case of block, brick, concrete or similar type walls, make ∅5 mm holes in the wall.
- Insert clip anchors for appropriate mounting.

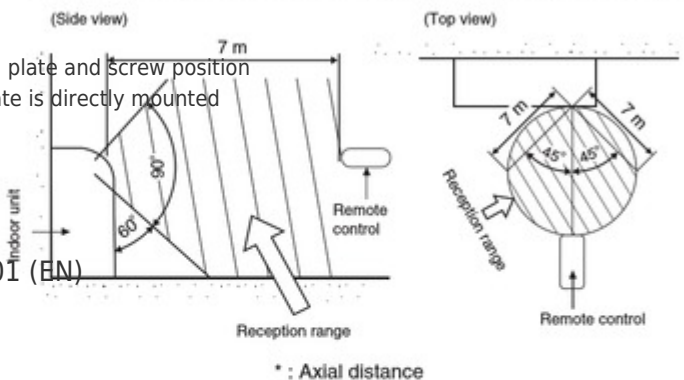
### Installation Place

**CAUTION**

Direct sunlight to the indoor unit's wireless receiver should be avoided. The concrete wall with anchor bolts should not be too close to RF waves. (For details, see the owner's manual)

### Remote control

- A place where there are no obstacles such as a curtain that may block the signal from the remote control.
- Do not install the remote control in a place exposed to direct sunlight or close to a heating source such as a stove.
- Keep the remote control at least 1 m apart from the nearest TV set or stereo equipment (This is necessary to prevent image disturbances or noise interference).
- The location of the remote control should be determined as shown below.



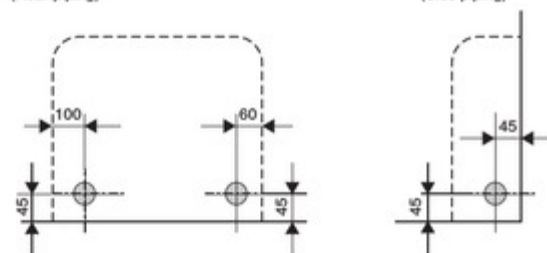
\* : Axial distance

## Cutting a Hole and Mounting Installation Plate

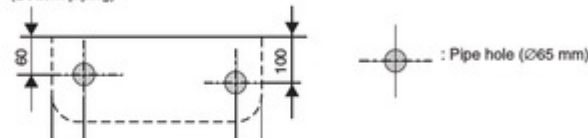
### Cutting a hole

(Rear piping)

(Side piping)



(Bottom piping)





[Table of Contents](#)

[Previous Page](#)  
[Next Page](#)

1  
...  
4  
5  
6  
7  
8  
9  
10  
11

Quick Links:

[Installation Manual](#)

[Table of Contents](#)

[Installation Diagram of Indoor and Outdoor...](#)

[Indoor Unit](#)

[Outdoor Unit](#)

## Related Manuals for Toshiba RAS-M14GAV-E

[Air Conditioner Toshiba RAS-M10GDCV-E Owner's Manual](#)

(multi-split type) (164 pages)

[Air Conditioner toshiba RAS-B10GKVP-E Service Manual](#)

Split type heat pump type/cooling onlytype (134 pages)

[Air Conditioner Toshiba 16N3KVP Series Owner's Manual](#)

(105 pages)

[Air Conditioner Toshiba RAS-B10SKVP-E Owner's Manual](#)

Split type air conditioner (91 pages)

[Air Conditioner Toshiba RAS-M07N3KV2 Series Installation Manual](#)

(78 pages)

[Air Conditioner Toshiba RAS-B10SKVP-E Owner's Manual](#)

Split type (31 pages)

[Air Conditioner Toshiba RAS-B10GKVP-E Installation Manual](#)

Split type for general public use (20 pages)

[Air Conditioner Toshiba RAS-B10SKVP-E Installation Manual](#)

(19 pages)

[Air Conditioner Toshiba RAS-10 Owner's Manual](#)

18ufv series, 18sav series (19 pages)

[Air Conditioner Toshiba RAS-B10SKVP-E Installation Manual](#)

Split type air conditioner (19 pages)

[Air Conditioner Toshiba RAS-M14GAV-E Installation Manual](#)

Outdoor unit multi-split type (16 pages)

[Air Conditioner Toshiba RAS-B10 SERIES Installation Manual](#)

(10 pages)

[Air Conditioner Toshiba RAS-B10N3KVP series Installation Manual](#)

Split type (9 pages)

[Air Conditioner Toshiba RAS-B10 Owner's Manual](#)

(8 pages)

[Air Conditioner Toshiba RAS-M14GAV-E Owner's Manual](#)

Split type (7 pages)

[Air Conditioner Toshiba RAS-B10N3KVP Owner's Manual](#)

Toshiba air conditioner (split type) owner's manual (5 pages)

## Related Content for Toshiba RAS-M14GAV-E

[RAS-2M10G3AVG-E Intermittent Operation Control For Indoor Fans Of The Indoor Unit At Thermo-Off Side In Heating Operation](#)

Toshiba RAS-2M10G3AVG-E

[RAS-5M34G3AVG-E Intermittent Operation Control For Indoor Fans Of The Indoor Unit At Thermo-Off Side In Heating Operation](#)

Toshiba RAS-5M34G3AVG-E

[MMU-UP0031YHP-ETR Test Run Of Indoor Unit](#)

Toshiba MMU-UP0031YHP-ETR

[RAV-GV1101AT8P-TR Indoor Unit](#)

Toshiba RAV-GV1101AT8P-TR

[RAS-B10S4KVPG-E In Case Of Indoor Unit Connect With 1:1 Outdoor Unit](#)

Toshiba RAS-B10S4KVPG-E

[RAS-M07N3KV2 Series Indoor Unit](#)

Toshiba RAS-M07N3KV2 Series

[Carrier MMU-UP0151YHP-UL Setup Of Selecting Function Indoor Unit](#)

Toshiba Carrier MMU-UP0151YHP-UL

[RAS-B24B2KVG-E Indoor Unit](#)

This manual is also suitable for:

[Ras-3m26gav-e1Ras-m18gav-eRas-3m18sav-eRas-4m23sav-eRas-4m27gav-e1Ras-5m34uav-e](#) ... [Show all](#)