



# Discharge Temperature Control - Toshiba RAS-10SAVP-E Service Manual



1  
2  
3  
4  
5  
6  
7  
8  
9  
10  
11  
12  
13  
14  
15  
16  
17  
18

19  
20  
21  
22  
23  
24  
25  
26  
27  
28  
29  
30  
31  
32  
33  
34  
35  
36  
37  
38  
39  
40  
41  
42  
43  
44  
45  
46  
47  
48  
49  
50  
51  
52  
53  
54  
55  
56  
57  
58  
59  
60  
61  
62  
63  
64  
65  
66  
67  
68

69  
70  
71  
72  
73  
74  
75  
76  
77  
78  
79  
80  
81  
82  
83  
84  
85  
86  
87  
88  
89  
90  
91  
92  
93  
94  
95  
96  
97  
98  
99  
100  
101  
102  
103  
104  
105  
106  
107  
108  
109  
110  
111  
112  
113  
114  
115  
116  
117  
118



- 

[Table of Contents](#)

- 

Troubleshooting



•

## Bookmarks





Toshiba ilmalämpöpumppujen myynti, huolto ja asennus: Jäähdytinpalvelu RefGroup Oy, Vantaa

**Item**

**Operation flow and applicable data, etc.**

12. Air purifying control [Detection of abnormality]

Air purifying operation

PURE lamp ON

Air purifier power ON \*

Air purifier

YES

power estimates

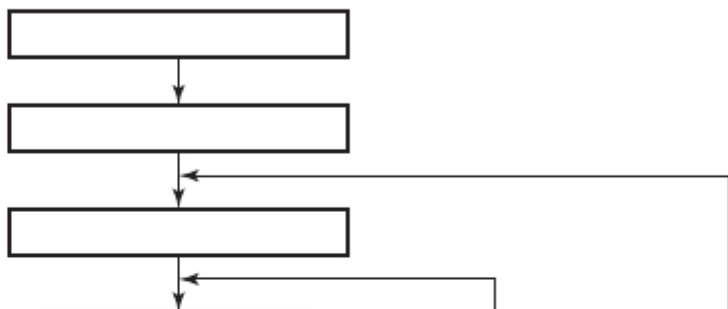
Error input is detected

Filter lamp (1Hz) ON

Air purifier power OFF

Error input

was detected by



5 times or more

YES

Air purifier power OFF

Filter lamp (1Hz) ON

1



Reset by RESET button.



Reset by RESET button or by the stop direction from the remote controller.

\* When the breaker is turned [ON] or RESET button is pushed while the FILTER indicator is turned on, the air purifier is not turned on until the integrated operation time of the indoor fan exceeds 1 hour after operation start.

It is the safety measures considering an incomplete drain when electric dust collector has been cleaned with water.

13. Discharge temperature control

**Td value**

Judges as an error and stops the compressor.

117°C

Reduce the compressor speed.

112°C

Reduce slowly compressor speed.

108°C

Keeps the compressor speed.

105°C

If the operation is performed with lower speed than one commanded by the serial signal, speed is slowly raised up to the commanded speed.

98°C

Operates with speed commanded by the serial signal.

1000H

NO

NO

YES

NO

Approx. 10 minutes

passed from the error input was detected.

YES

2

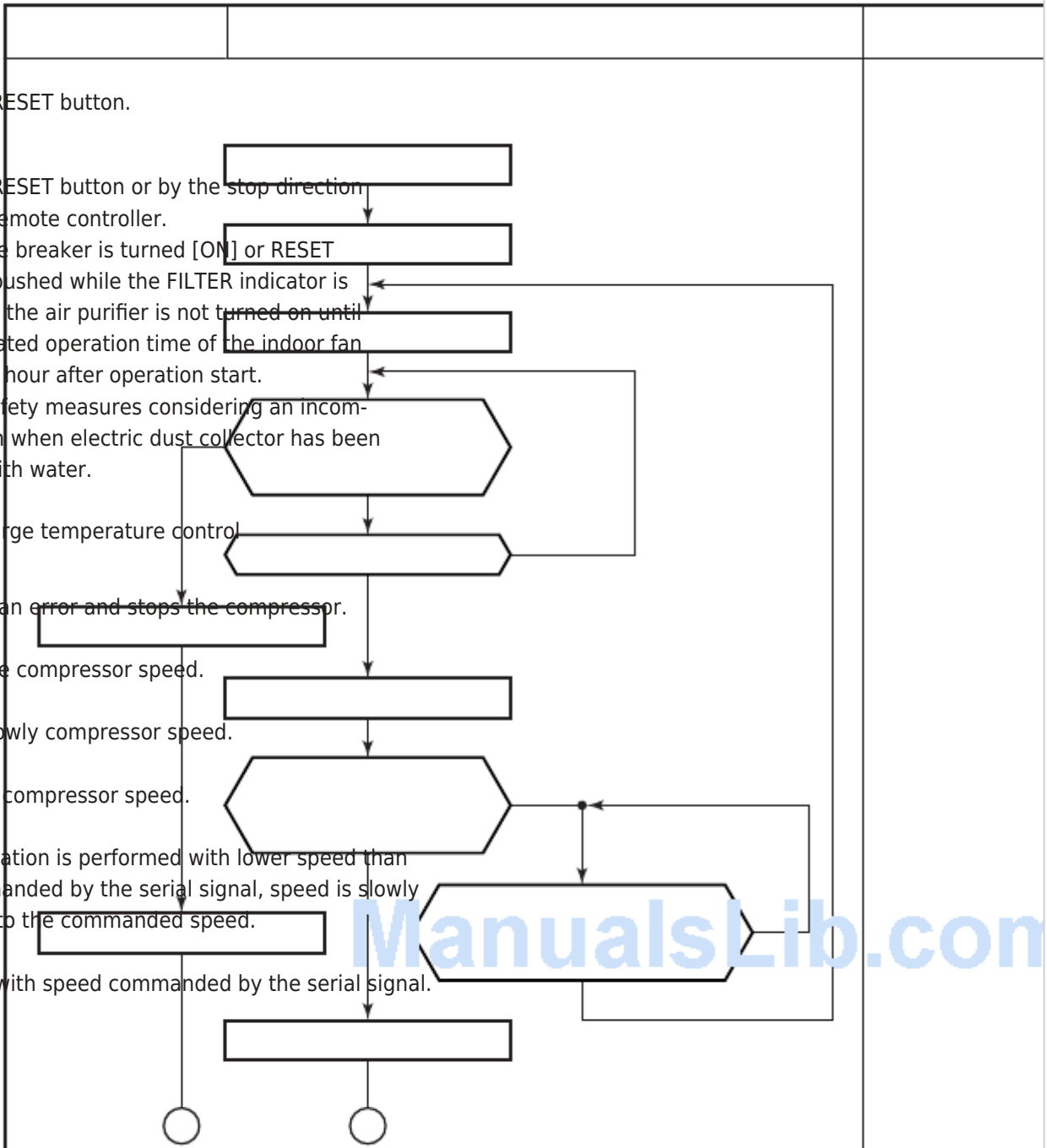
**Control operation**

www.ilmalämpöpumput.com

**1. Purpose**

The air purifying control function is to alert the user to trouble in the ionizing or air purifying operation.

**2. Description**



ManualsLib.com

Trouble is determined to have occurred (indicated by the FILTER indicator) in the following four cases.

- 1) When a count of 1000H has been reached on the timer
- 2) When the panel switch has been set to OFF by the opening of the air inlet grille, etc.

3) When an abnormal discharge caused by a symptom such as the build-up of dirt has been detected while the air purifier is ON

4) When the electric dust collector has not been installed correctly

\* Trouble case (2) or (3) is deemed to have occurred when the action concerned continues for more than one second.

**3. Operation**

The sequence that FILTER indicator is turned on are described in the left flowchart.

1) When 1000H timer counts up, the FILTER indicator keeps lighting even if the operation is stopped by the remote controller.

The timer is stored in memory of the microcomputer, and the operation time is cleared by filter RESET button on the indoor unit.

(FILTER indicator goes off.)

2) If the air purifying error input was detected by 5 times or under, turn on the purifier again approx. 10 minutes after and judge it again.

If the air purifying error input was detected by 5 times or more, determine the error and turn on the Filter lamp.

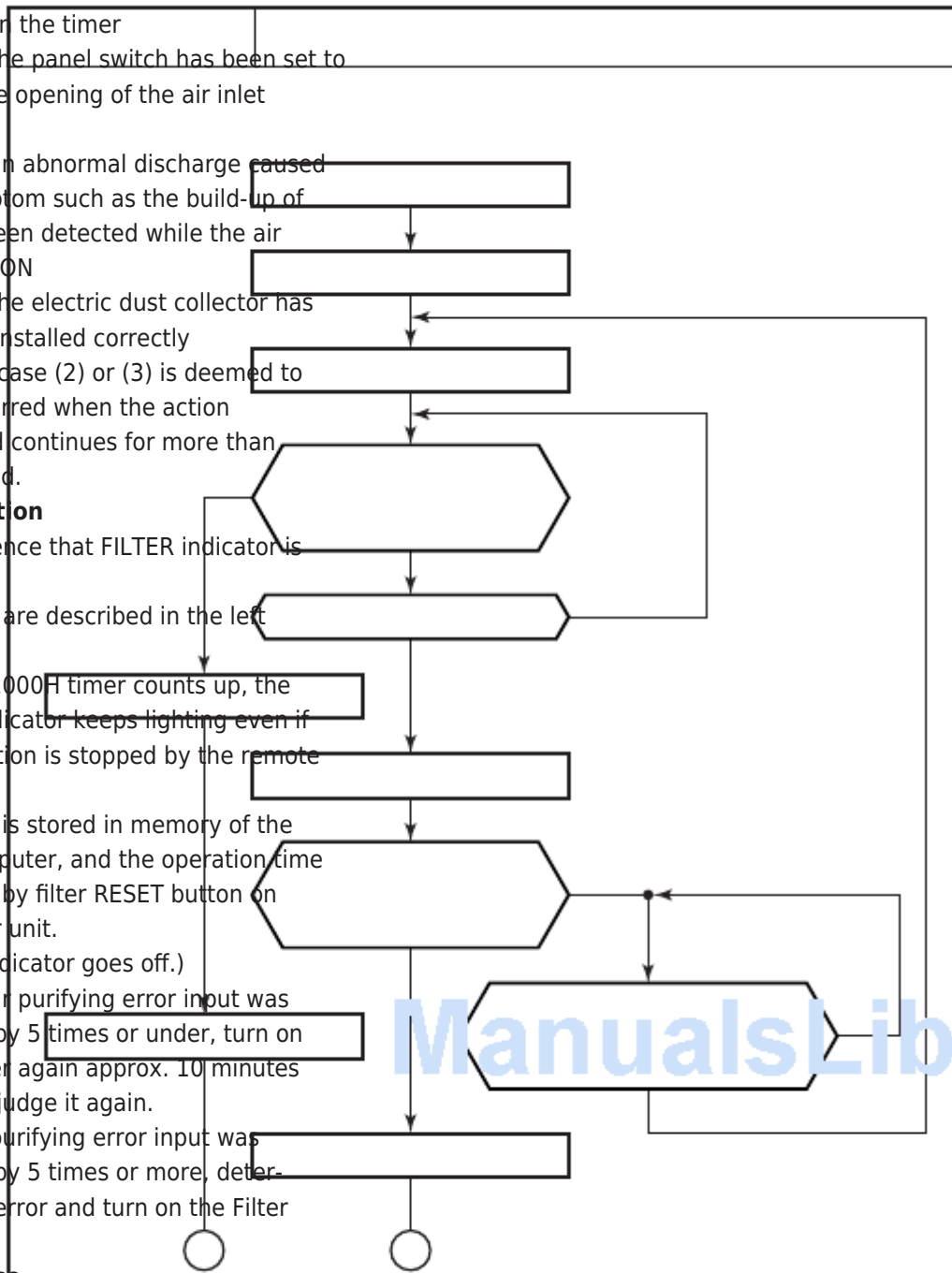
**1. Purpose**

This function detects error on the refrigerating cycle or error on the compressor, and performs protective control.

**2. Operation**

• Control of the compressor speed  
The speed control is performed as described in the left table based upon the discharge temperature.

**Description**



[Previous Page](#)  
[Next Page](#)

1  
...  
37  
38  
39  
40  
41  
42  
43  
44



Quick Links:

[Service Manual](#)

[Specifications](#)

[How to Diagnose the Trouble](#)

[How to Replace the Main Parts](#)

[Exploded Views and Parts List](#)

## Chapters

[Table of Contents](#) 2

[Operation Description 9-2. 1. Basic Operation](#) 28

### Related Manuals for Toshiba RAS-10SAVP-E

[Air Conditioner Toshiba RAS-B10SKVP-E Installation Manual](#)

(148 pages)

[Air Conditioner Toshiba RAS-B10SKVP-E Service Manual](#)

(120 pages)

[Air Conditioner Toshiba RAS-B10SKVP-E Service Manual](#)

Split type air conditioner (119 pages)

[Air Conditioner Toshiba RAS-B10SKVP-E Owner's Manual](#)

Split type air conditioner (91 pages)

[Air Conditioner Toshiba RAS-B10SKVP-E Owner's Manual](#)

Split type; for general public use (31 pages)

[Air Conditioner Toshiba RAS-B10SKVP-E Owner's Manual](#)

Split type (31 pages)

[Air Conditioner Toshiba RAS-B10SKVP-E Installation Manual](#)

(19 pages)

[Air Conditioner Toshiba RAS-B10SKVP-E Installation Manual](#)

Split type air conditioner (19 pages)

[Air Conditioner Toshiba RAS-16SKVP-ND Owner's Manual](#)

(230 pages)

[Air Conditioner Toshiba RAS-10SKVP-ND Installation Manual](#)

(132 pages)

[Air Conditioner Toshiba RAS-4M23SAV-E Service Manual](#)

Split type (121 pages)

[Air Conditioner Toshiba RAS-B10SKVP-E Service Manual](#)

Split type (117 pages)

[Air Conditioner Toshiba RAS-B10SKVP-E Service Manual](#)

(117 pages)

[Air Conditioner Toshiba RAS-10SKVP-ND Owner's Manual](#)

(61 pages)

[Air Conditioner Toshiba RAS-10SA-E Service Manual](#)

Split wall type (56 pages)

[Air Conditioner Toshiba RAS-16SKV Series Owner's Manual](#)

(52 pages)

## Related Content for Toshiba RAS-10SAVP-E

[RAS-25S4KVDG-ND Discharge Temperature Control](#)

Toshiba RAS-25S4KVDG-ND

[RAS-B22PKVSG-TR Discharge Temperature Control](#)

Toshiba RAS-B22PKVSG-TR

[RAS-25S4KVPG-ND Discharge Temperature Control](#)

Toshiba RAS-25S4KVPG-ND

[RAS-10S3AV-E Discharge Temperature Control](#)

Toshiba RAS-10S3AV-E

[RAS-18S3KV-E Discharge Temperature Control](#)

Toshiba RAS-18S3KV-E

[RAS-5M34U2AVG-E Discharge Temperature Control](#)

Toshiba RAS-5M34U2AVG-E

[RAS-25G3KVSG-ND Discharge Temperature Control](#)

Toshiba RAS-25G3KVSG-ND

[RAS-25E2KVG-ND Discharge Temperature Control](#)

Toshiba RAS-25E2KVG-ND

This manual is also suitable for:

[Ras-b10skvp-eRas-16savp-eRas-10skvp-ndRas-10savp-ndRas-13skvp-ndRas-13savp-nd](#) ... [Show all](#)